

# AUTOMATIONDIRECT.com



# Other atlas

# HMI

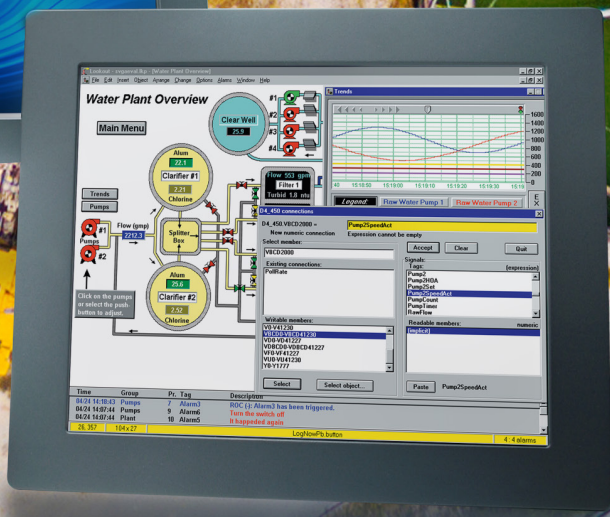
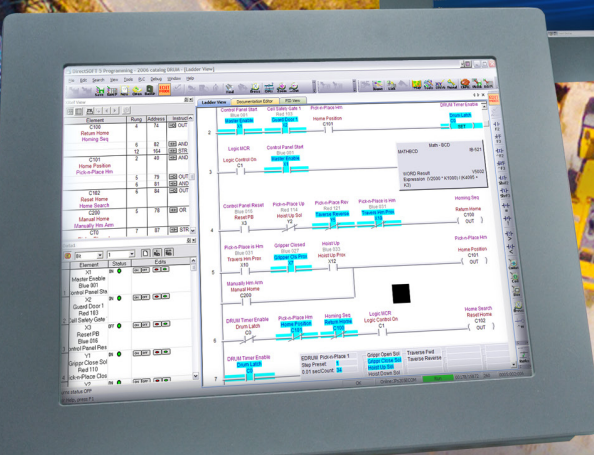
Up-to-date price list:  
[www.automationdirect.com/pricelist](http://www.automationdirect.com/pricelist)

FREE Technical Support:  
[www.automationdirect.com/support](http://www.automationdirect.com/support)

FREE Videos:  
[www.automationdirect.com/videos](http://www.automationdirect.com/videos)

FREE Documentation:  
[www.automationdirect.com/documentation](http://www.automationdirect.com/documentation)

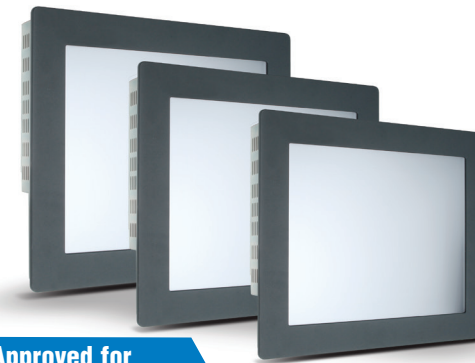
FREE CAD drawings:  
[www.automationdirect.com/cad](http://www.automationdirect.com/cad)



# ATLAS™ Industrial Grade LCD Monitors starting at \$1,076.00!



## Atlas™ Industrial Grade LCD Monitors



These heavy duty PC monitors offer superb quality at a competitive price. Their compact size and very thin panel mounted depth (less than 2.75") allows them to be used in size restricted projects. And the hazardous locations listing makes them ideal for installation in harsh environments found in many factory automation applications. All sizes are available in non-touch or with a 5-wire analog resistive touchscreens. There are currently three sizes, 15", 17", and 19", in this series.

The ATLAS series includes 15" XGA, 17" SXGA, and 19" SXGA LCD monitors. All models come standard with 100-240 VAC input power supplies and have NEMA 4/4X/12 panel-mountable front bezels. All units provide Analog Video (VGA) and Digital Video Input (DVI) connections and 5-wire analog resistive touchscreen "T" models supply connection via either USB or RS-232. The entire series is UL/cUL listed and is UL approved for Class I Division 2, Class II Division 2 and Class III hazardous locations.

**UL Approved for Class I Division 2 and Class 3 Hazardous Locations**



Integrated Power Supply

### Features

- Optional non-touch or 5-wire analog resistive touch screen available
- UL 508 and ANSI/ISA 12.12.01 listed for Hazardous Locations: Class I, Division 2, Groups A, B, C, D; Class II, Division 2, Groups F and G and Class III.
- NEMA 4/4X/12 front bezel
- Integral 100-240 VAC power supply
- RS-232 and USB support for touch screen models
- Simplified installation with no studs
- VESA compliant - all modes up to SXGA, 16 million colors
- 2-year warranty

**ATM1500**  
**\$1,076.00**



#### ATM1500 - 15"

- 15" color TFT LCD display
- XGA, 1024 x 768 native resolution
- 16 million colors
- 40,000 hrs backlight Life
- Integral 100-240 VAC power supply
- Simplified installation with no studs
- Thin design - only 2.4" behind bezel
- (DVI) Digital Video Inputs
- Accepts analog 15-pin video input

**ATM1500T (touch)**  
**\$1,292.00**

**ATM1700**  
**\$1,357.00**



#### ATM1700 - 17"

- 17" color TFT LCD display
- SXGA, 1280 x 1024 native resolution
- 16 million colors
- 50,000 hrs backlight life
- Integral 100-240 VAC power supply
- Simplified installation with no studs
- Thin design - only 2.6" behind bezel
- (DVI) Digital Video Inputs
- Accepts analog 15-pin video input

**ATM1700T (touch)**  
**\$1,573.00**

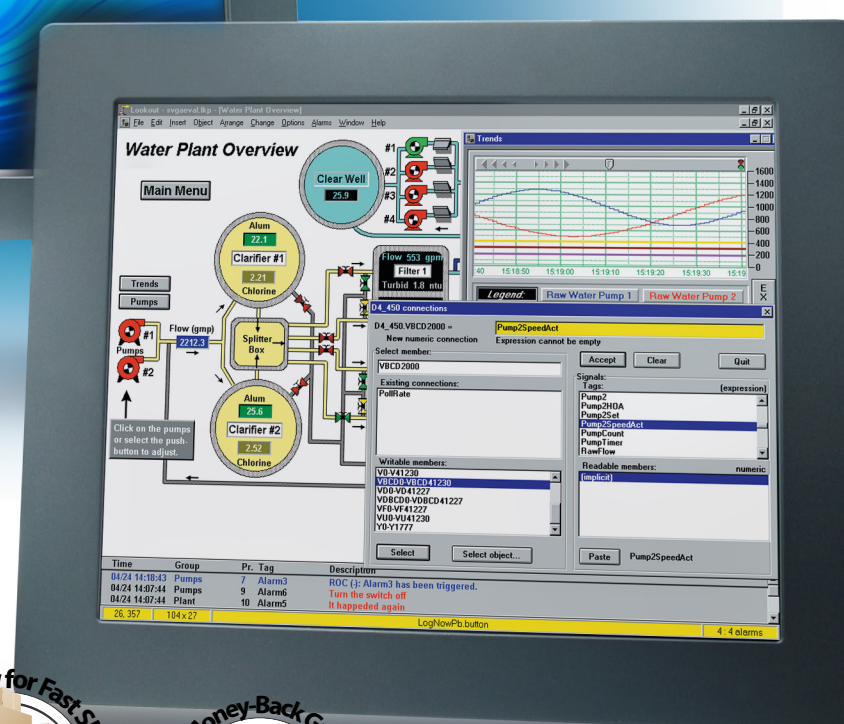
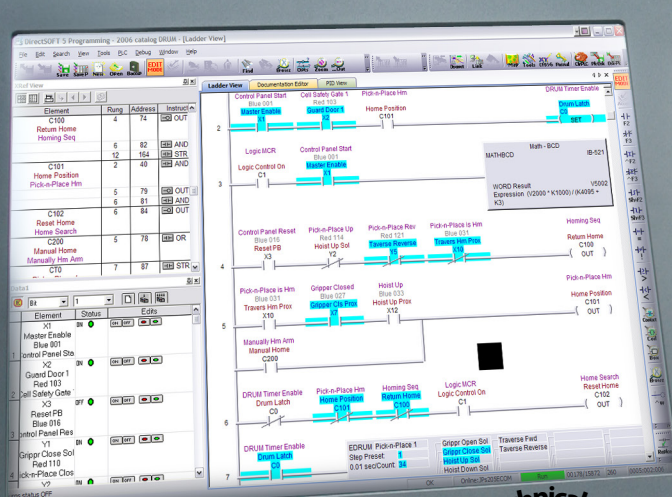
**ATM1900**  
**\$1,681.00**



#### ATM1900 - 19"

- 19" color TFT LCD display
- SXGA, 1280 x 1024 native resolution
- 16 million colors
- 40,000 hrs backlight life
- Integral 100-240 VAC power supply
- Simplified installation with no studs
- Thin design - only 2.7" behind bezel
- (DVI) Digital Video Inputs
- Accepts analog 15-pin video input

**ATM1900T (touch)**  
**\$1,897.00**



Located in USA



# Quality Industrial Monitors at a Great Price!



15" ATLAS	17" ATLAS	19" ATLAS
\$1,076.00 ATM1500	\$1,357.00 ATM1700	\$1,681.00 ATM1900
\$1,292.00 ATM1500T	\$1,573.00 ATM1700T	\$1,897.00 ATM1900T

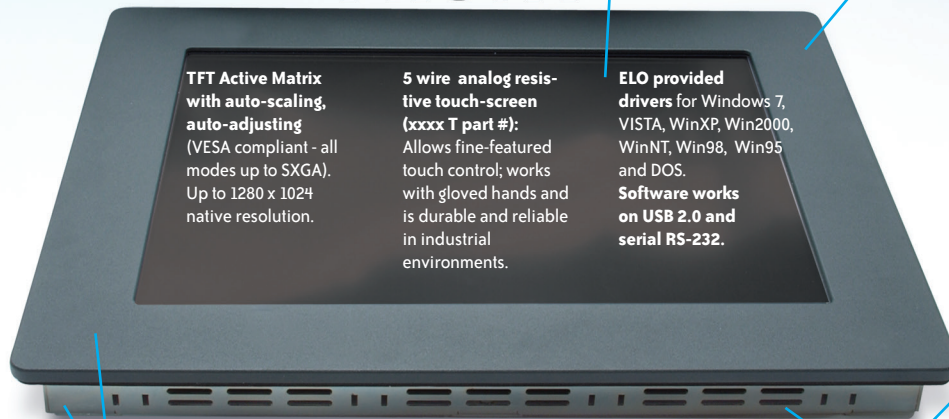
**"T" models have resistive touchscreens**

**UL, cUL approved  
NEMA 4/4X/12, IP65  
FCC 47 CFR, Part  
15, Class A Bezel  
Construction**

**Bezel Construction:**  
0.25" Machined Aluminum with a recessed gasket pocket to keep moisture out and powder coated treated with an attractive dark gray textured powder coating

**Impact Window:**  
.125" Lexan(Polycarbonate) with a clear hard coat

## FRONT



**TFT Active Matrix with auto-scaling, auto-adjusting** (VESA compliant - all modes up to SXGA). Up to 1280 x 1024 native resolution.

**5 wire analog resistive touch-screen (xxxx T part #):** Allows fine-featured touch control; works with gloved hands and is durable and reliable in industrial environments.

**ELO provided drivers** for Windows 7, VISTA, WinXP, Win2000, WinNT, Win98, Win95 and DOS.  
**Software works on USB 2.0 and serial RS-232.**

**Simplified installation with no studs,** housed in a heavy duty steel chassis with a powder coated machined aluminum bezel (mounting clips included)

**Screen setup via rear keypad** prevents tampering

**"Auto-adjust" button** on back panel keypad for easy display optimization

**Ventilation** located on all sides to reduce heat build-up 0 to 50 °C (32 to 122 °F)

**VESA Ready**  
VESA arm mount ready (100mm)

The **16-gauge CRS steel chassis** provides corrosion resistance and extra strength.

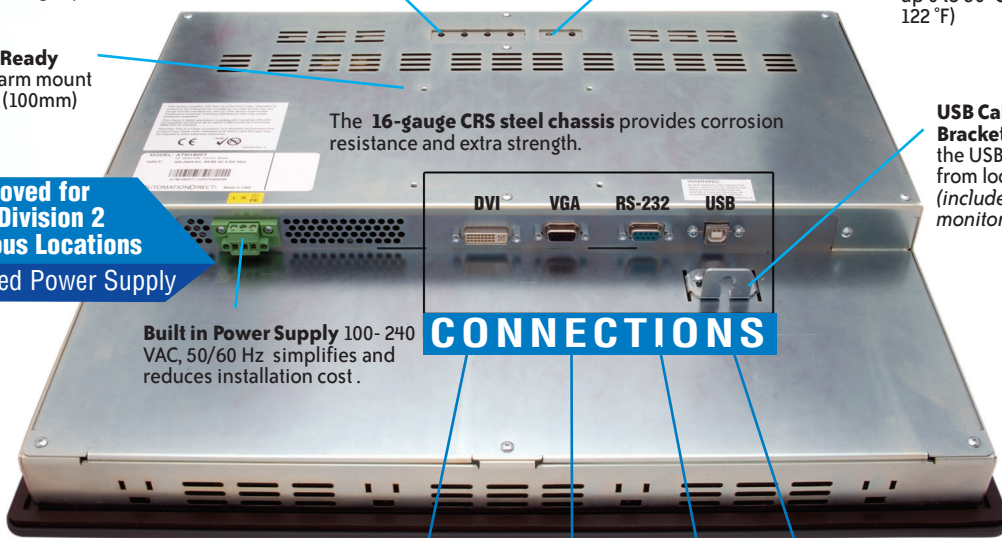
**USB Cable Bracket** keeps the USB cable from loosening (included with monitor)

**UL Approved for Class I Division 2 Hazardous Locations**

**Integrated Power Supply**

**Built in Power Supply** 100-240 VAC, 50/60 Hz simplifies and reduces installation cost.

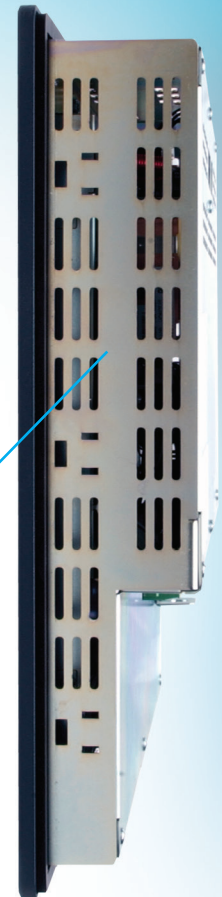
## CONNECTIONS



## BACK



Touch models only      Touch models only



## SIDE

**Compact size** and very thin panel mount depth of less than 2.75" saves enclosure space

**Recessed cable connections** conserve panel space

# Atlas Industrial Flat Panel PC Monitors

## LCD Monitor Specifications



LCD Monitor Specifications						
Part Numbers	ATM1500	ATM1500T	ATM1700	ATM1700T	ATM1900	ATM1900T
<b>Nominal Size</b>	15"		17"		19"	
<b>Price</b>	\$1,076.00	\$1,292.00	\$1,357.00	\$1,573.00	\$1,681.00	\$1,897.00
<b>DISPLAY</b>						
<b>Display Type</b>	TFT Active Matrix					
<b>Display Diagonal Size</b>	14.96" (380 mm)		17.04" (432.8 mm)		18.97" (481.8 mm)	
<b>Display Size (Active Area H x W)</b>	8.98" x 11.97" (228.1 mm x 304.0 mm)		10.64" x 13.30" (270.3 mm x 337.8 mm)		11.85" x 14.82" (301.0 mm x 376.4 mm)	
<b>Native Resolution</b>	XGA, 1024 x 768		SXGA, 1280 x 1024			
<b>VESA Modes Supported</b>	Up to 1280 x 1024 @75Hz					
<b>Displayable Colors</b>	16M					
<b>Brightness, Typical</b>	250 Nit		300 Nit		270 Nit	
<b>Contrast Ratio, Typical</b>	800:1		1000:1		2000:1	
<b>Horizontal/Vertical View Angle, CR&gt;5, Typical</b>	150°/145°		170°/170°		178°/178°	
<b>Backlight Life</b>	50,000 hrs, Minimum					
<b>Display Input Signal</b>	Analog 15-Pin D-Sub, DVI-D					
<b>Impact Window</b>	0.125" (3.2 mm) Lexan (polycarbonate), clear hard coat					
<b>PHYSICAL</b>						
<b>Overall Monitor Dimensions (H x W x D)</b>	12.80" x 15.80" x 2.65" (325.1 mm x 401.3 mm x 67.3 mm)		14.48" x 17.14" x 2.85" (367.8 mm x 435.4 mm x 72.4 mm)		15.70" x 18.66" x 2.95" (398.8 mm x 474.0 mm x 74.9 mm)	
<b>Cutout Dimensions (H x W)</b>	12.00" x 15.00" (304.8 mm x 381.0 mm)		13.70" x 16.35" (348.0 mm x 415.3 mm)		14.90" x 17.75" (378.5 mm x 450.9 mm)	
<b>Chassis Depth</b>	2.4" (61.0 mm)		2.6" (66.0 mm)		2.7" (68.6 mm)	
<b>Bezel Construction</b>	0.25" (6.4 mm) Machined Aluminum with recessed gasket pocket					
<b>Bezel Finish</b>	Dark Gray Textured Powder Coated					
<b>Chassis Construction</b>	16 Gauge CRS Steel					
<b>Weight</b>	14.0 lbs (6.4 kg)		18.5 lbs (8.4 kg)		21 lbs (9.5 kg)	
<b>Shipping Weight</b>	19 lbs (8.6 kg)		23.5 lbs (10.7 kg)		26 lbs (11.8 kg)	
<b>ELECTRICAL</b>						
<b>AC Input Voltage</b>	100 - 240 VAC, 50/60 Hz					
<b>AC Input Current</b>	0.5A Maximum		1A Maximum			
<b>Input Power</b>	≤ 25W		≤ 30W		≤ 35 W	
<b>ENVIRONMENTAL</b>						
<b>Operating Temperature</b>	0 to 50 °C (32 to 122 °F)					
<b>Storage Temperature</b>	-20 to 60 °C (-4 to 140 °F)					
<b>Operating and Storage Humidity</b>	20% to 80% RH, noncondensing					
<b>Operating Shock</b>	15g peak acceleration, 11msec					
<b>Operating Vibration 5-2000 Hz</b>	0.006" peak to peak, 1g max					
<b>Operating Altitude</b>	Sea level - 10,000 feet					
<b>Storage Altitude</b>	Sea level - 40,000 feet					
<b>AGENCY</b>						
<b>Front Panel NEMA Rating</b>	NEMA 4/4X/12, IP65					
<b>FCC</b>	47 CFR, Part 15, Class A					
<b>EU Compliance</b>	EN 55022: Class A, EN 61000-3-2: Class A, EN 61000-3-3, EN 61000-6-2, IEC 60950-1					
<b>Safety Agency Approvals</b>	UL 508 Listed (file #E157382), ANSI/ISA 12.12.01-2012 Listed* (file #E200031), cUL Listed CSA C22.2, #142, CSA C22.2, #143*					

\* Suitable for use in Class I, Division 2, Groups A, B, C and D, Class II, Division 2, Groups F and G, Class III Hazardous Locations or Non-Hazardous locations only.

For use on a flat surface of a type 1, 4, 4X or 12 enclosure with provisions for Class I Division 2 wiring methods

Temperature Code: T5

# Atlas Industrial Flat Panel PC Monitors

## LCD Monitor Specifications (cont'd)

Touch Screen Specifications			
Part Numbers	ATM1500T	ATM1700T	ATM1900T
<b>TOUCH SCREEN (Optional)</b>			
<b>Touch Screen Technology</b>	5- Wire Analog Resistive		
<b>Interface</b>	USB 1.1 and Serial RS-232		
<b>Resolution</b>	4096 x 4096		
<b>Positional Accuracy (Maximum Error)</b>	0.18" (4.6 mm)		0.19" (4.8 mm)
<b>Positional Accuracy (Standard Deviation of Error)</b>	<0.08" (<2.0 mm)		
<b>Screen Finish</b>	Anti-Reflective, Surface Durability - 3H per ASTM D3363		
<b>Chemical Resistance</b>	Acetone, Methylene Chloride, MEK, Isopropyl Alcohol, Hexane, Turpentine, Mineral Spirits, Unleaded gasoline, Diesel fuel, Motor oil, Transmission fluid, Antifreeze, vinegar, ammonia-based glass cleaner.		
<b>Electrostatic Protection</b>	Per EN 61000-4-2, 1995, Withstands 20 discharges up to 15 kV		
<b>Expected Life</b>	>35,000,000 Activations		



## Supported PC Video Modes

Video Modes						
Mode	Dot Clock (MHz)	Horizontal Freq (KHZ)	Vertical Freq (Hz)	H Sync Polarity	V Sync Polarity	Display Modes for Best Image Quality
640 x 350 @ 70Hz	25.144	31.430	70.000	P	N	
640 x 400 @ 70Hz	28.287	31.430	70.000	N	P	
720 x 400 @ 70Hz	28.287	31.430	70.000	N	P	
640 x 480 @ 60Hz	25.175	31.469	59.940	N	N	
640 x 480 @ 72Hz	31.500	37.861	59.940	N	N	
640 x 480 @ 75Hz	31.500	37.500	75.000	N	N	
800 x 600 @ 56Hz	36.000	35.156	56.250	P	P	
800 x 600 @ 60Hz	40.000	37.879	60.317	P	P	
800 x 600 @ 72Hz	50.000	48.077	72.188	P	P	
800 x 600 @ 75Hz	49.500	46.875	75.000	P	P	
1024 x 768 @ 60Hz	65.000	48.363	60.005	N	N	ATM1500/ATM1500T
1024 x 768 @ 70Hz	75.000	56.476	70.070	N	P	ATM1500/ATM1500T
1024 x 768 @ 75Hz	78.750	60.023	75.030	P	P	ATM1500/ATM1500T
1280 x 1024 @ 60Hz	108.000	63.981	60.020	P	P	ATM1700/ATM1700T & ATM1900/ATM1900T
1280 x 1024 @ 75Hz	135.000	79.976	75.035	P	P	ATM1700/ATM1700T & ATM1900/ATM1900T

# Atlas Industrial Flat Panel PC Monitors

## ATM1500 / ATM1500T

The *Atlas* ATM1500/ATM1500T is a high performance 15" color TFT flat panel monitor specifically designed for harsh industrial environments including Class I Division 2, Class II Division 2 and Class III Hazardous Locations. The ATM1500/ATM1500T accepts standard analog VGA or digital DVI input and can display all VESA video modes up to 1280 x 1024 at 75Hz, 800:1 contrast with 16 million colors. An optional 5-wire analog touch screen (ATM1500T) is available that offers both RS-232 and USB interface capability. The monitor is housed in a heavy duty steel chassis with a powder coated machined aluminum bezel. The monitor is certified to NEMA 4/4X/12 standards and is UL/CUL listed. Panel mounting is simplified using convenient mounting clips instead of conventional studs. All monitors are shipped with a power input wiring receptacle, 6' VGA cable, 6' RS-232 cable (ATM1500T only), 2m USB Cable (ATM1500T only), mounting hardware, Quick Installation Guide, and CD-ROM containing Hardware User's Guide (ATM-15-USER) and touch screen driver software for Windows\*.



**\$1,076.00 / \$1,292.00**

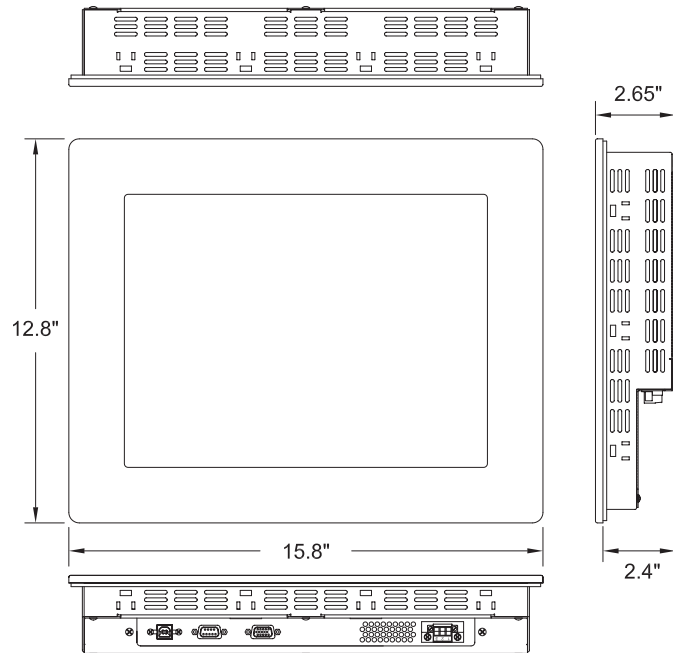


\*Visit [automationdirect.com](http://automationdirect.com) for specific operating system requirements.

### Specifications

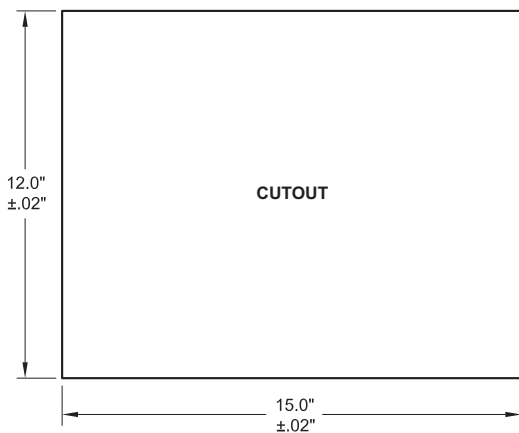
- 15" color TFT LCD display
- UL 508 and ANSI/ISA 12.12.01-2012 listed for Hazardous Locations: Class I, Division 2, Groups A, B, C, D; Class II, Division 2, Groups F and G and Class III hazardous locations when mounted in a NEMA Type 1, 4, 4X or 12 enclosure
- NEMA 4/4X/12 front bezel
- 2-year warranty
- Integral 100-240 VAC power supply
- Simplified installation with no studs
- Thin design - only 2.4" behind bezel
- Accepts analog 15-pin Video input, digital input DVI-D
- VESA compliant - all modes up to SXGA, 16 million colors
- Optional 5-wire resistive touch screen with both RS-232 and USB interface

### Dimensions

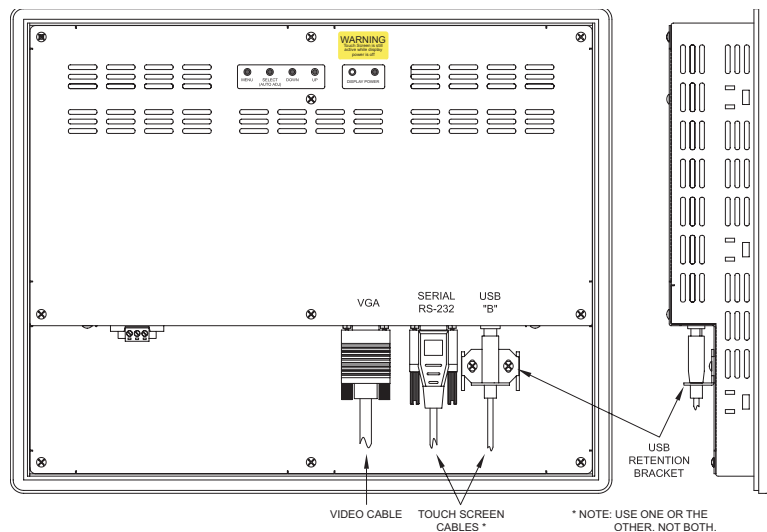


**NOTE: Don't forget the optional cables shown on the Accessories page.**

### Mounting Cutout



### Cable Connections



# Atlas Industrial Flat Panel PC Monitors

## ATM1700 / ATM1700T

The *Atlas* ATM1700/ATM1700T is a high performance 17" color TFT flat panel monitor specifically designed for harsh industrial environments including Class I Division 2, Class II Division 2 and Class III Hazardous Locations. The ATM1700/ATM1700T accepts standard analog VGA input, or digital DVI input, and can display all VESA video modes up to 1280 x 1024 at 75Hz, 1000:1 contrast with 16 million colors. An optional 5-wire analog touch screen (ATM1700T) is available that offers both RS-232 and USB interface capability. The monitor is housed in a heavy duty steel chassis with a powder coated machined aluminum bezel. The monitor is certified to NEMA 4/4X/12 standards and is UL/CUL listed. Panel mounting is simplified using convenient mounting clips instead of conventional studs. All monitors are shipped with a power input wiring receptacle, 6' VGA cable, 6' RS-232 cable (ATM1700T only), 2m USB Cable (ATM1700T only), mounting hardware, Quick Installation Guide, and CD-ROM containing Hardware User's Guide (ATM-17-USER) and touch screen driver software for Windows\*.



**\$1,357.00 / \$1,573.00**

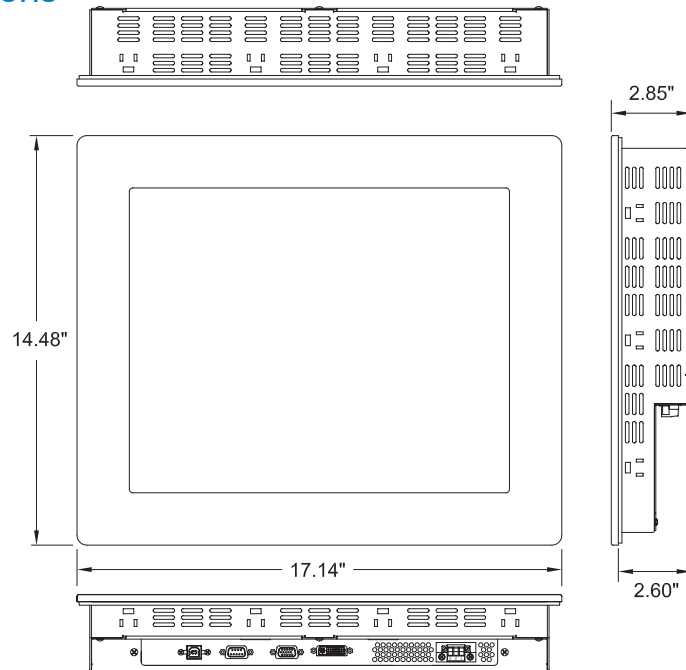


\*Visit [automationdirect.com](http://automationdirect.com) for specific operating system requirements.

### Specifications

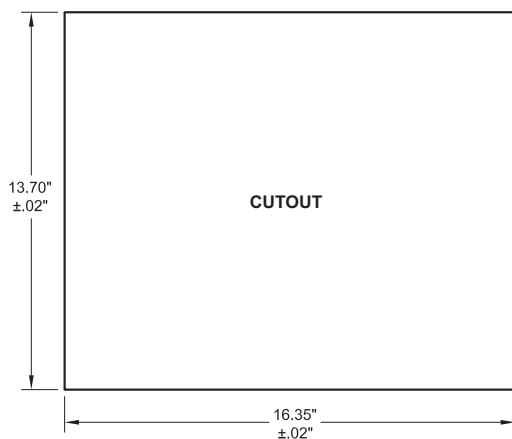
- 17" color TFT LCD display
- UL 508 and ANSI/ISA 12.12.01-2012 listed for Hazardous Locations: Class I, Division 2, Groups A, B, C, D; Class II, Division 2, Groups F and G and Class III hazardous locations when mounted in a NEMA Type 1, 4, 4X or 12 enclosure
- NEMA 4/4X/12 front bezel
- 2-year warranty
- Integral 100-240 VAC power supply
- Simplified installation with no studs
- Thin design - only 2.4" behind bezel
- Accepts analog 15-pin Video input, digital input DVI-D
- VESA compliant - all modes up to SXGA, 16 million colors
- Optional 5-wire resistive touch screen with both RS-232 and USB interface

### Dimensions

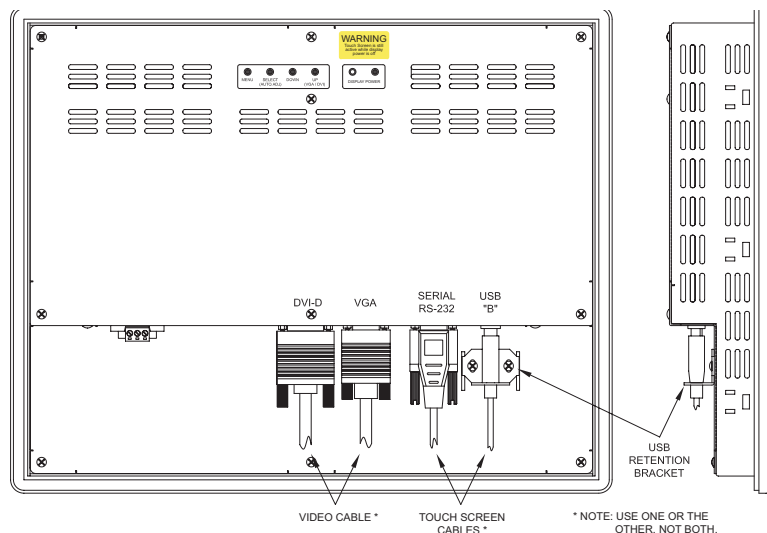


**NOTE: Don't forget the optional cables shown on the Accessories page.**

### Mounting Cutout



### Cable Connections



# Atlas Industrial Flat Panel PC Monitors

## ATM1900 / ATM1900T

The *Atlas* ATM1900/ATM1900T is a high performance 19" color TFT flat panel monitor specifically designed for harsh industrial environments including Class I Division 2, Class II Division 2 and Class III Hazardous Locations. The ATM1900/ATM1900T accepts standard analog VGA input, or digital DVI input, and can display all VESA video modes up to 1280 x 1024 at 75Hz, 2000:1 contrast with 16 million colors. An optional 5-wire analog touch screen (ATM1900T) is available that offers both RS-232 and USB interface capability. The monitor is housed in a heavy duty steel chassis with a powder coated machined aluminum bezel. The monitor is certified to NEMA 4/4X/12 standards and is UL/CUL listed. Panel mounting is simplified using convenient mounting clips instead of conventional studs. All monitors are shipped with a power input wiring receptacle, 6' VGA cable, 6' RS-232 cable (ATM1900T only), 2m USB Cable (ATM1900T only), mounting hardware, Quick Installation Guide, and CD-ROM containing Hardware User's Guide (ATM-19-USER) and touch screen driver software for Windows\*.



**\$1,681.00/ \$1,897.00**

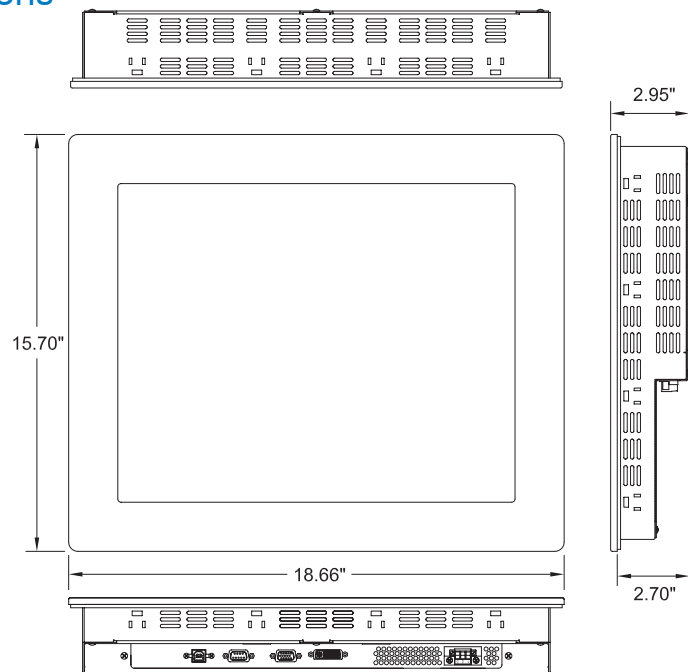


\*Visit [automationdirect.com](http://automationdirect.com) for specific operating system requirements.

### Specifications

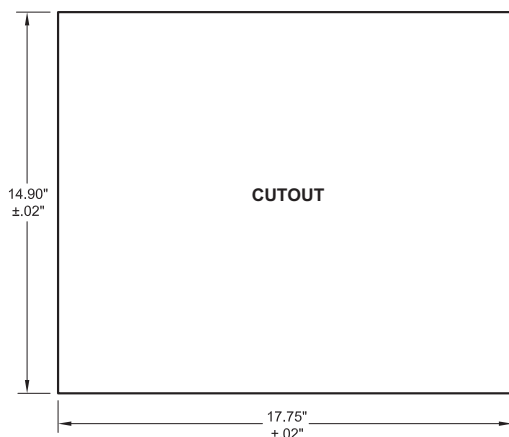
- 17" color TFT LCD display
- UL 508 and ANSI/ISA 12.12.01-2012 listed for Hazardous Locations: Class I, Division 2, Groups A, B, C, D; Class II, Division 2, Groups F and G and Class III hazardous locations when mounted in a NEMA Type 1, 4, 4X or 12 enclosure
- NEMA 4/4X/12 front bezel
- 2-year warranty
- Integral 100-240 VAC power supply
- Simplified installation with no studs
- Thin design - only 2.4" behind bezel
- Accepts analog 15-pin Video input, digital input DVI-D
- VESA compliant - all modes up to SXGA, 16 million colors
- Optional 5-wire resistive touch screen with both RS-232 and USB interface

### Dimensions

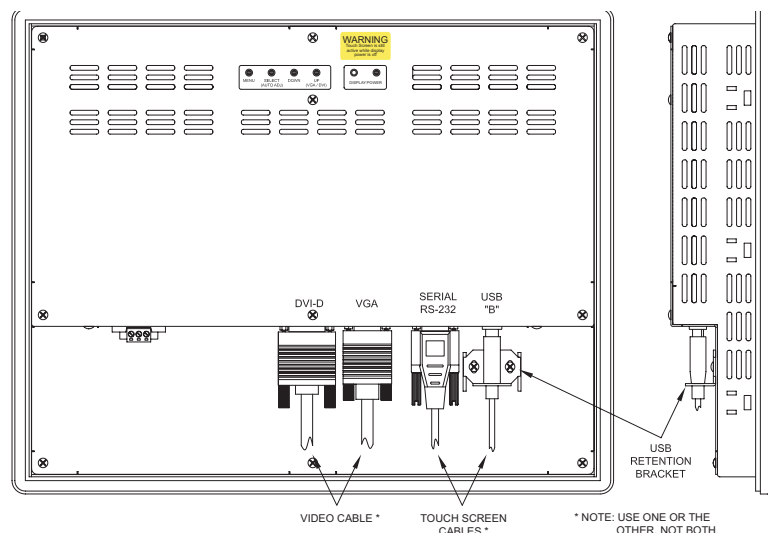


**NOTE: Don't forget the optional cables shown on the Accessories page.**

### Mounting Cutout



### Cable Connections



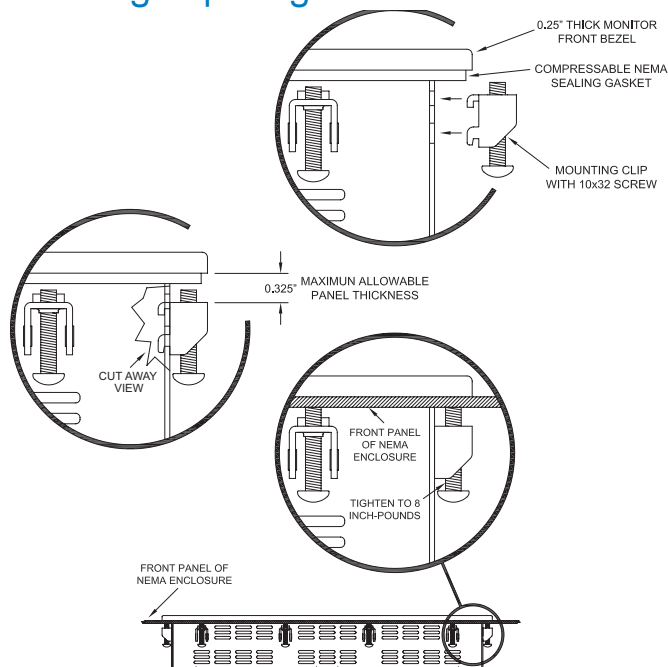


# Atlas Industrial Flat Panel PC Monitors

## Mounting clip installation

To install the monitor, make a cutout (according to the cutout diagram for the respective monitor) through one of the walls of your NEMA enclosure. Next, hold the monitor in place and install the mounting clips. The monitor uses "U"-shaped clips and a special gasket to achieve a proper seal. Tighten the clips to the point where the back of the monitor's bezel just begins to contact the front of the NEMA enclosure. The use of an adjustable torque driver is recommended. The screws should be tightened to 8 inch-pounds. Tighten the clips in a cross pattern to develop an even pressure on the sealing gasket. **DO NOT OVERTIGHTEN AS DAMAGE CAN RESULT, CAUSING LOSS OF SEALING INTEGRITY.**

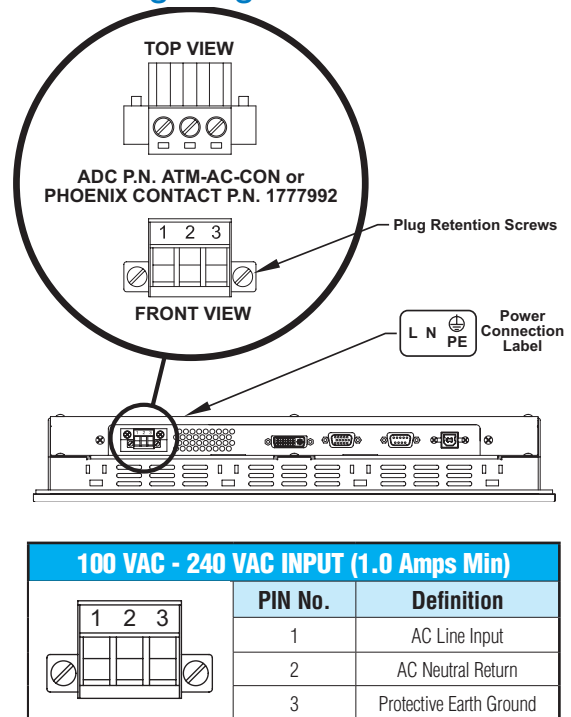
## Mounting Clip Diagram



## Connecting power

The monitor is powered from 100-240 VAC, 50/60 Hz. Power is connected to the monitor through a removable Phoenix Contact plug (ADC P.N. ATM-AC-CON or Phoenix Contact P.N. 1777992) that allows for screw termination of field wiring. The use of 18 AWG or greater (12 AWG maximum wire) is recommended. Connect the field wiring according to the appropriate table below. After the connections are made, make sure the power connection screws (the two screws shown in the "Front View" below) are securely tightened. This will prevent the plug from pulling out.

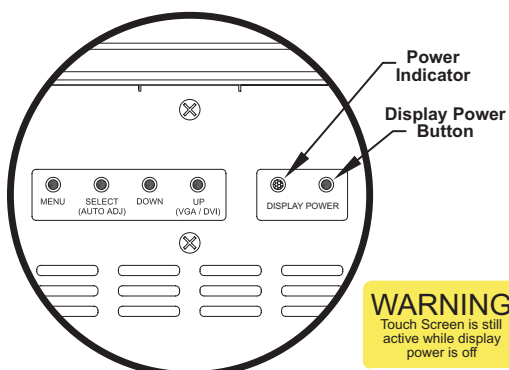
## Power Wiring Diagram



## Setting the On-Screen Display (OSD) controls

The On Screen Display (OSD) controls are used for making adjustments to the monitor's settings and are located on the back of the monitor. They consist of a single LED and five pushbuttons (functions are described in Chapter 3 of the respective monitor's Hardware User's Guide) located on the Documentation and Driver CD, or downloadable from the Online Documentation area of the *AutomationDirect* Web site.

## OSD Controls



## OSD Main Menu Display



# Atlas PC Monitor Accessories

## Accessories & Replacement Parts

Part Number	Description	Price
<b>ATM-CBL-VGA10</b>	10 ft. 15-pin coaxial VGA cable. Connects any Atlas monitor to a standard VGA card.	\$49.00
<b>ATM-CBL-VGA25</b>	25 ft. 15-pin coaxial VGA cable. Connects any Atlas monitor to a standard VGA card.	\$103.00
<b>ATM-CBL-VGA50</b>	50 ft. 15-pin coaxial VGA cable. Connects any Atlas monitor to a standard VGA card.	\$146.00
<b>ATM-CBL-DV3M</b>	10 ft. (3 meter) DVI (type D) video cable. Connects M1700 and M1900 to a standard DVI-D port. DVI cables provide a higher bandwidth video interface than the VGA cables.	\$76.00
<b>ATM-CBL-10</b>	10 ft. serial communication cable. Connects Atlas monitor to std. 9-pin RS-232 port.	\$27.00
<b>ATM-CBL-25</b>	25 ft. serial communication cable. Connects Atlas monitor to std. 9-pin RS-232 port.	\$49.00
<b>ATM-CBL-50</b>	50 ft. serial communication cable. Connects Atlas monitor to std. 9-pin RS-232 port.	\$72.00
<b>USB-CBL-AB3</b>	3-ft (0.9 meter) Standard USB 2.0 cable with Standard-A plug to Standard-B plug. Suitable for all USB devices.	\$8.50
<b>USB-CBL-AB6</b>	6-ft (1.8 meter) Standard USB 2.0 cable with Standard-A plug to Standard-B plug. Suitable for all USB devices.	\$11.00
<b>USB-CBL-AB10</b>	10-ft (3 meter) Standard USB 2.0 cable with Standard-A plug to Standard-B plug. Suitable for all USB devices.	\$25.50
<b>USB-CBL-AB15</b>	15-ft (4.6 meter) Standard USB 2.0 cable with Standard-A plug to Standard-B plug. Suitable for all USB devices.	\$29.00
<b>ATM-AC-CON</b>	Replacement Power Wiring Connector for AC Powered Units.	\$16.50
<b>ATM-CLIP</b>	Replacement flat panel mounting clip kit. Package of 16 clips and screws.	\$38.50

**USB-CBL-AB3**



**USB-CBL-AB6**



**USB-CBL-AB10**



**USB-CBL-AB15**



**ATM-CBL-VGA10**



**ATM-CBL-10**



**ATM-CBL-VGA25**



**ATM-CBL-25**



**ATM-AC-CON**



**ATM-CBL-VGA50**



**ATM-CBL-50**



**ATM-CLIP**



**ATM-CBL-DV3M**

