

BantamBox Series – Polycarbonate Enclosures

NEMA 1, 3R, 4, 4X and 12 with Screw Cover



BB060555W



BBCC090603W

Applications

AttaBox offers an all-polycarbonate product with clear or opaque covers. These enclosures include an external flush wall design, unobstructed internal sidewalls, 304 stainless steel cover screws, and watertight seal.

Construction

- Polycarbonate for 1480 in-lb, high impact resistance per UL746C
- Gray in color with gloss finish
- Poured polyurethane seamless gasket provides watertight, dust-tight environmental seal
- Multiple depths available in most sizes
- Flush sides for a perfect fit
- Multiple molded-in bosses for a variety of mounting solutions
- Lift-off cover with 4 screws
- Tightening torque: M4-9 17 lb·in, M6 17-22 lb·in

Listings

- UL/cUL File [UL File E64358]
- NEMA Ratings 1, 3R, 4, 4X, 12
- IEC 60529 IP66 [UL File 362920]
- Flammability Rating: UL94-V2
- Non-flame propagating
- UV Exposure Rating: UL-f1
- Temperature Range: -40 °F to 212 °F [-40°C to 100°C]
- Certifications: cULus, REACH, CE, IEC



BantamBox Series – Polycarbonate Enclosures

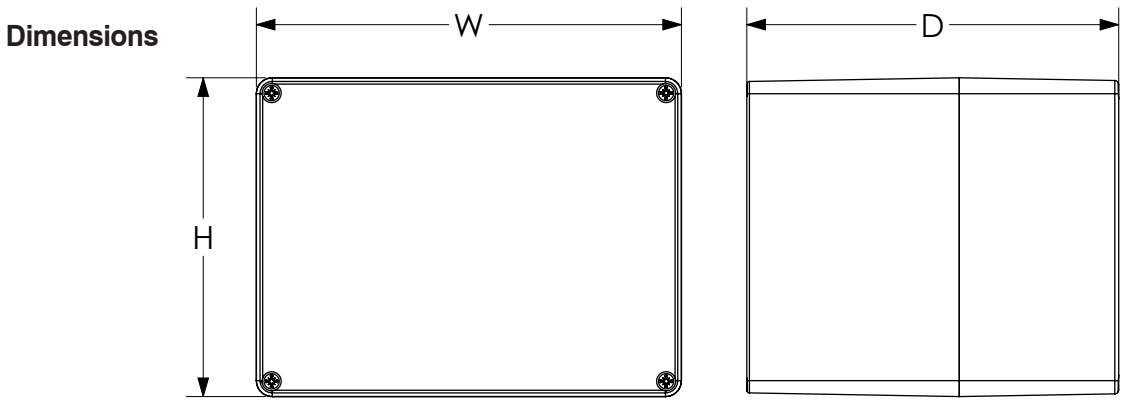
NEMA 1, 3R, 4, 4X and 12 with Screw Cover

Enclosure Shipping Schedule			
Same day	1 - 5 days	1 - 15 days	1 - 20 days

Color indicates shipping lead time in business days.

Bantam Box Series – Polycarbonate Enclosures					
Opaque Cover	Price	Clear Cover	Price	Enclosure Overall Size HxWxD	Subpanels
BB060555W	\$18.50	BBCC060555W	\$19.00	2.56 x 1.97 x 2.17 [65 x 50 x 55]	–
BB080805W	\$21.50	BBCC080805W	\$23.00	3.23 x 3.15 x 2.17 [82 x 80 x 55]	BPB0808P
BB080809W	\$24.50	–	–	3.23 x 3.15 x 3.35 [82 x 80 x 85]	BPB0808P
BB080810W	\$25.00	–	–	3.23 x 3.15 x 3.74 [82 x 80 x 95]	BPB0808P
BB090603W	\$21.00	BBCC090603W	\$22.50	3.86 x 2.52 x 1.46 [98 x 64 x 37]	–
BB128055W	\$24.00	BBCC128055W	\$25.50	4.72 x 3.15 x 2.17 [120 x 80 x 55]	BPB1280P
BBR128080W	\$26.00	–	–	4.72 x 3.15 x 3.15 [120 x 80 x 80]	BPB1280P
BB128010W	\$27.50	–	–	4.72 x 3.15 x 3.94 [120 x 80 x 100]	BPB1280P
BB121255W	\$27.50	–	–	4.80 x 4.72 x 2.17 [122 x 120 x 55]	BPB1212P
BB121275W	\$30.00	BBCC121275W	\$32.00	4.80 x 4.72 x 2.95 [122 x 120 x 75]	BPB1212P
BB121211W	\$35.00	BBCC121211W	\$36.50	4.80 x 4.72 x 4.13 [122 x 120 x 105]	BPB1212P
BB168055W	\$29.00	–	–	6.30 x 3.15 x 2.17 [160 x 80 x 55]	BPB1680P
BB168090W	\$31.00	BBCC168090W	\$33.00	6.30 x 3.15 x 3.54 [160 x 80 x 90]	BPB1680P
BB161255W	\$37.50	BBCC161255W	\$39.50	6.30 x 4.72 x 2.17 [160 x 120 x 55]	BPB1612P
BB161290W	\$38.50	BBCC161290W	\$40.50	6.30 x 4.72 x 3.54 [160 x 120 x 90]	BPB1612P
BB161214W	\$45.50	BBCC161214W	\$47.50	6.30 x 4.72 x 5.51 [160 x 120 x 140]	BPB1612P
BB201275W	\$39.50	BBCC201275W	\$41.50	7.87 x 4.72 x 2.95 [200 x 120 x 75]	BPB2012P
BB201290W	\$40.50	–	–	7.87 x 4.72 x 3.54 [200 x 120 x 90]	BPB2012P
BB201510W	\$46.50	BBCC201510W	\$49.50	7.87 x 5.91 x 3.94 [200 x 150 x 100]	BPB2015P
BB201513W	\$48.00	BBCC201513W	\$52.00	7.87 x 5.91 x 4.92 [200 x 150 x 125]	BPB2015P
BB251690W	\$48.00	–	–	9.84 x 6.30 x 3.54 [250 x 160 x 90]	BPB2516P
BB251611W	\$57.00	–	–	9.84 x 6.30 x 4.53 [250 x 160 x 115]	BPB2516P
BB251612W	\$58.00	BBCC251612W	\$62.00	9.84 x 6.30 x 4.72 [250 x 160 x 120]	BPB2516P
BB251615W	\$60.00	BBCC251615W	\$64.00	9.84 x 6.30 x 5.91 [250 x 160 x 150]	BPB2516P

*Notes: Subpanels must be ordered separately.
Dimensions in inches [millimeters].*



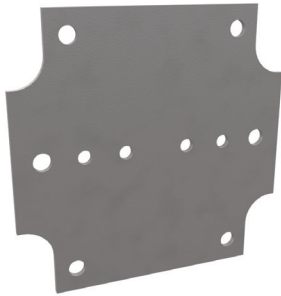
Subpanels for BantamBox Series Enclosures



AttaBox
A ROBROY ENCLOSURES™ BRAND

Phenolic Resin Hard Paper Subpanels

Lightweight, durable and electrically resistant. Includes mounting hardware.



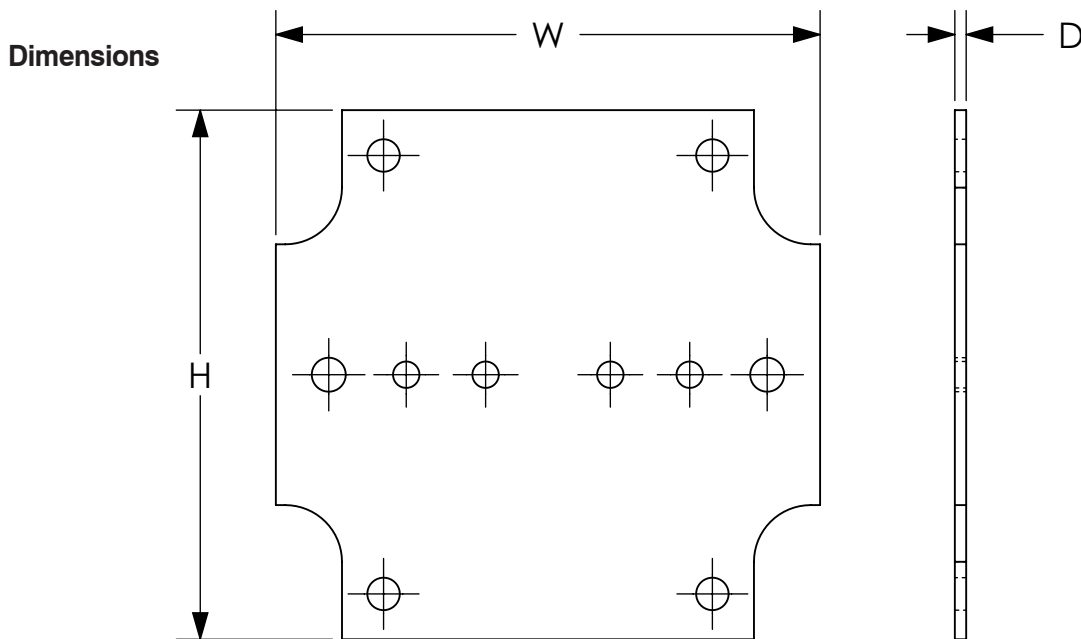
BPB0808P

Enclosure Shipping Schedule			
Same day	1 - 5 days	1 - 15 days	1 - 20 days

Color indicates shipping lead time in business days.

BantamBox Series Subpanels		
Part Number	Price	Subpanel Size
BPB0808P	\$2.50	2.83 x 2.76 [72 x 70]
BPB1280P	\$2.50	4.53 x 2.76 [110 x 70]
BPB1680P	\$3.00	5.91 x 2.76 [150 x 70]
BPB1212P	\$4.00	4.41 x 4.33 [112 x 110]
BPB1612P	\$3.50	5.94 x 4.41 [151 x 112]
BPB2012P	\$3.50	7.44 x 4.29 [189 x 109]
BPB2015P	\$5.25	7.52 x 5.59 [191 x 142]
BPB2516P	\$6.00	9.53 x 5.98 [242 x 152]

Note: Dimensions in inches [millimeters].



See our website: www.AutomationDirect.com for complete engineering drawings.