

more Programming Power...

Powerful FREE configuration software with legendary ease of use

C-more's mission is to make you feel like a touch panel configuration expert. So we put in many tools to make your job go faster and more efficiently. Even simple things, such as object configuration boxes, have improved. We think you'll be able to do more with C-more in even less time!



Save your screens in the Screen Library to use with other projects

Build your own keypads to use with numeric and text entry

Click on the Library tab to view libraries of personally stored objects, screens, sound bites, etc. This saves hours of work!

Thumbnail project preview window helps you organize multiscreen projects. And you can rearrange the screens with a drag & drop of your mouse

Property List, show and modify images

Scrolling object selection window lets you find the object you want fast. Just drag and drop it on the screen.

Scrolling parts list shows variations of the objects selected above. Just drag and drop on the screen.

Object Layer List Window shows all the objects on the active screen. Quickly select an object from the list to edit or highlight the Object.

Lock/Unlock Object- This editing tool disables edits to objects that are locked. Once Locked, the object will remain locked and saved within the software. Reduces edit mistakes to objects when multiple users may be accessing or editing a project.

Hide/Unhide Object feature- This editing tool allows hiding objects that may interfere with editing other objects on the screen, such as Pop-up window objects.

Grouping Control: expand or collapse Grouped objects. Access individual objects in a group without having to separate the group or move objects on the screen.

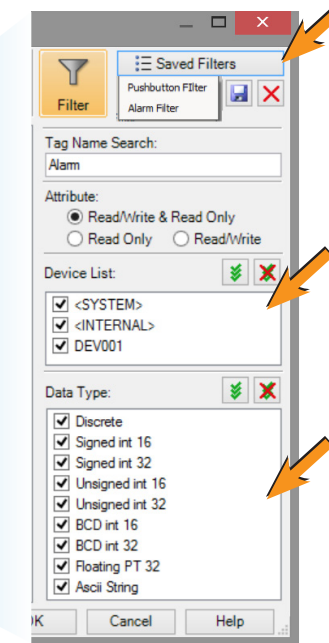
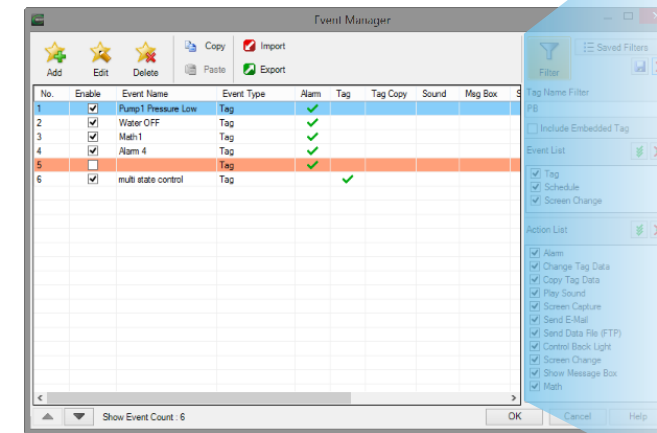
Powerful Database Tools

Customize your searches

Easily edit C-more's databases with the latest software tools. Create, import, export and search for tags and other datatypes

with a click of a button. Powerful search filters allow for custom search terms based on various options.

- Tagname Database
- Message Database
- Event Manager Database
- Address Book



Customize and save your own search terms for those most used items.

Device type filters allow you to reduce the view to just the device tags you want to find or edit.

Data type filters allow you to reduce the view to just the specific tag data types you want to find or edit.

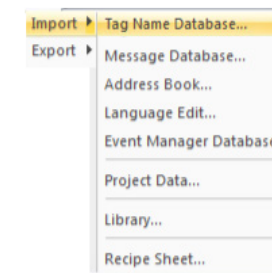
Database Import & Export saves you time

The Import and Export tools allow you to quickly exchange database files between C-more projects, or PLC tagname files. With just a few clicks of the mouse, you can create a .csv or

xls file. This greatly reduces the time needed to create a new database, especially when there are hundreds, or thousands of data points to work with.

Import or Export

- Tagnames
- Messages
- E-mail Addresses
- Languages
- Events
- Project File
- Screen Library
- Graphics Library
- Object Library
- Sound Library
- Recipe Sheets



Importing PLC tags is easy

With supported PLC databases, simply export the PLC tagnames and use the C-more import tool to select the .csv or xls file.

Import Tag Name Database from Excel/CSV File

File Path: My Database Folder\ML1100-TagDB.XLS

CSV Format: C-more (Default)

My file contains a Header Row
1st Row is not imported.

1	A	B	C	D
1	409	MX1100	AXIS_0_POSITION	Floating_PT_32
2	409	MX1101	CONSOLE_PB_LAMP	Discrete
3	409	MX1102	COUNTERS[0].ACC	Signed_int_32
4	409	MX1103	COUNTERS[0].CU	Discrete
5	409	MX1104	COUNTERS[0].DN	Discrete
6	409	MX1105	COUNTERS[0].OV	Discrete
7	409	MX1106	COUNTERS[0].PRE	Signed_int_32
8	409	MX1107	COUNTERS[0].UN	Discrete
9	409	MX1108	COUNTERS[1].ACC	Signed_int_32
10	409	MX1109	COUNTERS[1].CD	Discrete
11	409	MX1110	COUNTERS[1].CU	Discrete
12	409	MX1111	COUNTERS[1].OV	Discrete
13	409	MX1111	COUNTERS[1].CU	Discrete

Device: MX1100

Protocol: Allen-Bradley EtherNet/IP Client (MicroLogix 1100/1400)

Append Text:

Import Array Element: 3000

Alias Option: Do not import Aliases

Overwrite Existing Tags

Import Cancel Help

Productivity Tools: Built-in Simulator

Built-in project simulator pays for the HMI in time savings!

The “one click” built-in simulator is one of **C-more**’s most powerful features. You will find yourself using this feature every couple of minutes while developing your project. Using this intuitive simulator will result in a better looking and more effective project completed in less time.

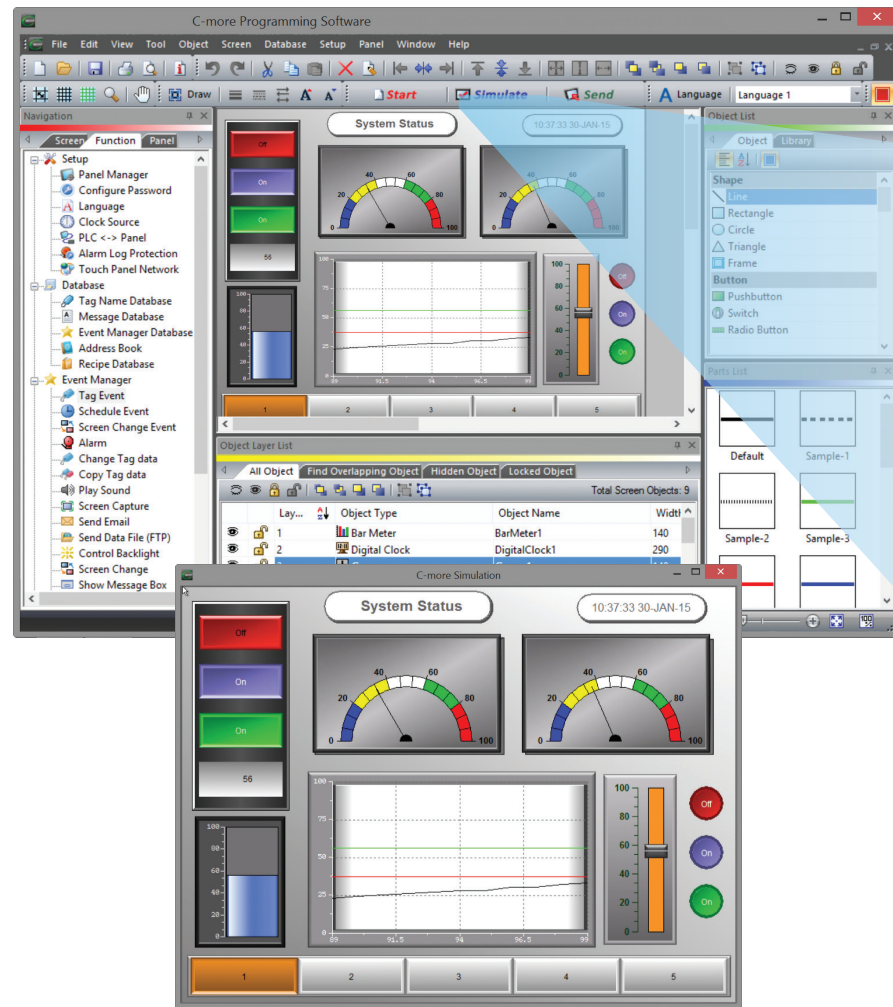
The simulator allows you to fully simulate your entire project (every object, every screen) while it is being developed, without being connected to a PLC/PAC. Simply click on the “Simulate Project” button at any stage of project development. A window will appear over your development screen that contains a pixel-for-pixel representation of how your project will appear on your physical screen. A simulation control window will also appear.

Now the fun begins. Simply click your mouse on any simulated screen object and it will behave as if your finger is actually touching the screen. For example, clicking on a pushbutton object will activate and deactivate it as if an operator were touching it! The same will be true for thumbwheels, slider switches (simply

hold your mouse button down and slide), selector switches, toggle switches and so forth. Want to see how an analog meter moves based on dynamic data from the PLC/PAC? Simply move your mouse to the “Simulation control window” of the simulator, move to the tag and click on the data you wish to change. Now type in the value that you want to simulate, and watch your meter move on the simulated screen.

And here’s the really cool thing - whatever values you modify during simulation, the effect will be propagated throughout your entire project, object by object, screen by screen. That’s because this is a true “project simulator”.

To stop the simulation, just click on your project development screen and you’re back to project configuration. You can go back and forth in a flash. It’s that easy!



The simulation control window shows the list of screens and the tags, with their values, for the highlighted screen in the list.

Tag Name	PLC Address	Data Type	Value
ENGAGEALARM4		Discrete	OFF
PB1		Discrete	OFF
PB2		Discrete	OFF
PB3		Discrete	OFF
PRODUCTION ...		Ascii String	
PRODUCTION ...		Ascii String	
SLIDE		Signed int 16	55
SLIDE2		Signed int 16	0
SYS BIT ON		Discrete	ON
SYS COUNTINT...		Unsigned int 32	500

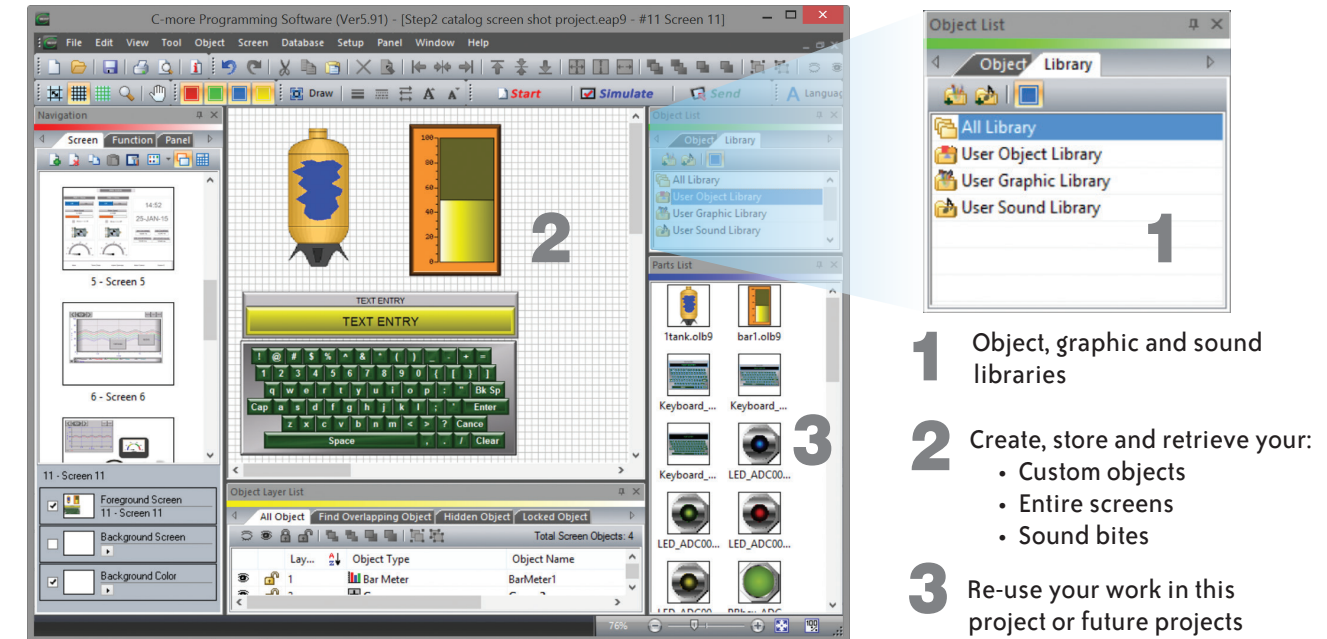
For objects tied to bit or analog data, change actual values here in the tag list, then verify the correct behavior on the screen. You can also change input data on the simulated screen and see the value change in the tag list.

User Libraries and Project Migration

User libraries allow you to re-use your work again and again

C-more provides three user libraries that allow you to efficiently re-use your work throughout your project or for other projects in the future. You can store a custom object, such as your company logo or a group of objects that compose a custom object (see the tank with cut-away and bar

graph below). You can also store entire screens, graphics and sound bites. You can access your libraries at any time and re-use your work by merely clicking on the saved item and dragging it from the library into your project. You can even import and export library items to share with other designers.



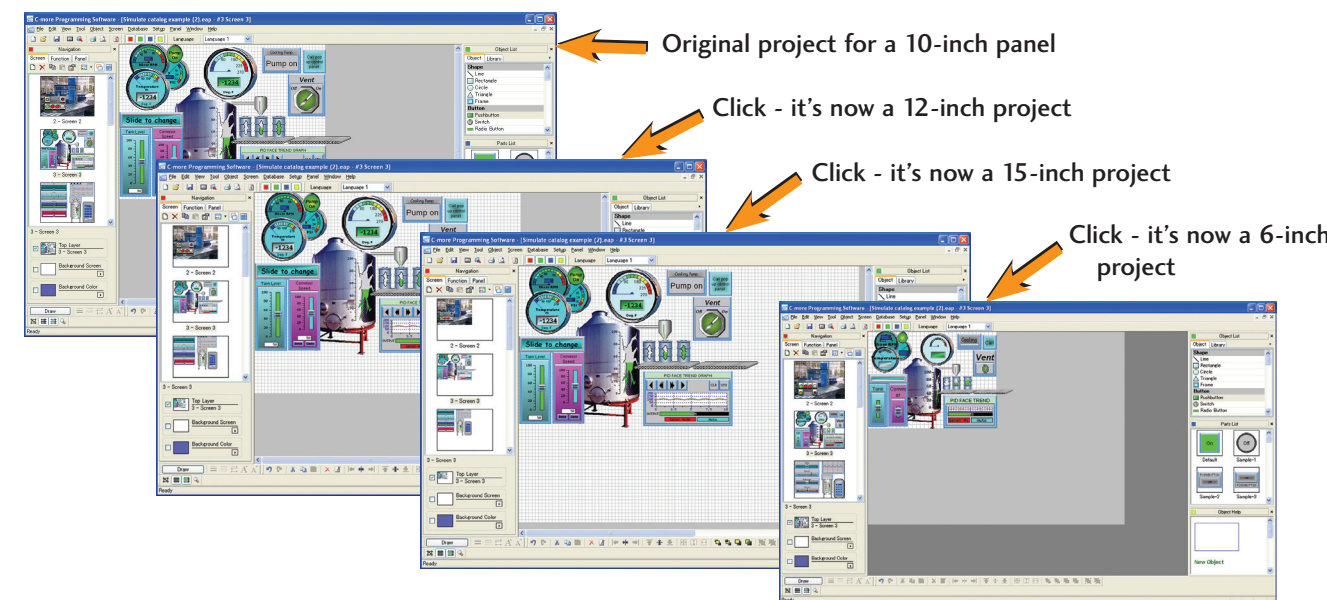
- 1 Object, graphic and sound libraries
- 2 Create, store and retrieve your:
 - Custom objects
 - Entire screens
 - Sound bites
- 3 Re-use your work in this project or future projects

Check out our online library at: c-more.automationdirect.com/support_tools/library.html

Change your project screen size with a click of your mouse

Imagine developing your project for a 10-inch panel and then deciding to change the size to a 15-inch panel or an 8-inch panel. In the past, you most likely had to recreate your entire project and reconfigure every object, tag and screen. With **C-more**, your project can be automatically converted for

a different size display with a click of the mouse. Of course, you may wish to move things around a little since you have a different screen size. This feature is great for OEMs or integrators that may be installing different configurations of the same machine or process.

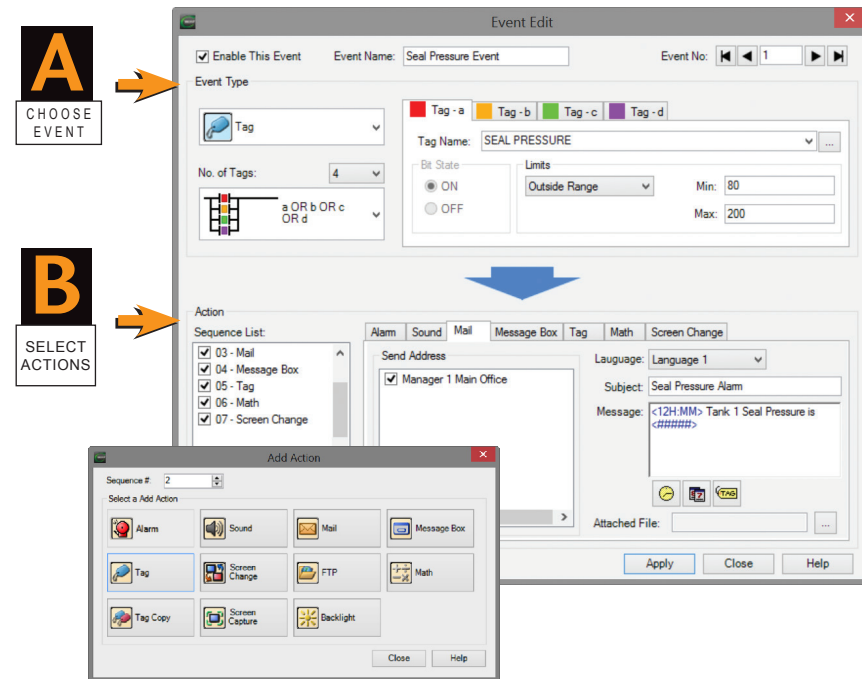


- Original project for a 10-inch panel
- Click - it's now a 12-inch project
- Click - it's now a 15-inch project
- Click - it's now a 6-inch project

Powerful Event Manager Triggers Alarms and Actions

Fill-in-the-blank Event Manager saves time, PLC/PAC programming and memory

C-more provides a powerful yet easy-to-use Event Manager which takes exception handling (including alarms) and scheduling to the next level. The simple fill-in-the-blank manager allows events to automatically trigger several actions without the need for hours of PLC/PAC programming.



On the Event Manager screen, create an event, enter the required data, and select multiple actions. It's that easy!

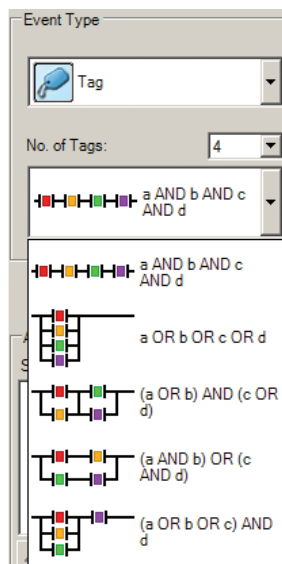
The Event Manager goes beyond simple Alarm and Message functions, and allows C-more to take action based on events such as:

- Tag status or value
- A combination of tag status or values
- Date or time
- A screen change

The Possible Actions include:

- Create an alarm
- Play a sound
- Write values to tags
- Copy tag values
- Send e-mails (with embedded tag data!)
- Force screen changes
- Capture screen image
- Pop-up messages (with embedded tag data!)
- Send files via FTP
- Carry out math formulas

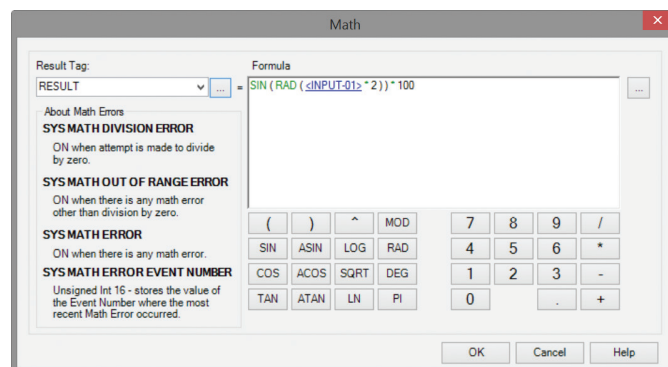
Tag Combinations allow for simple logic with multiple events



Combine up to four different tags into simple logic events that will trigger actions.

Math Actions add more power to your project

Create a custom formula or use the Math Keypad to create formulas with Constants or even Tag Values. The Result is placed into a User Defined Tag.



1234 + SIN(<TAG> + PI(123) + LOG a

- Numbers in Black
- Tags in Blue
- Calculations and Functions in Green
- Errors in Red

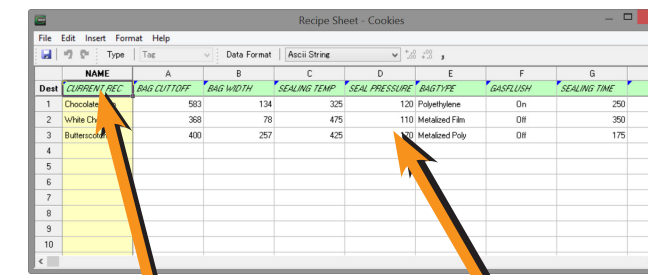
Convenient Recipe & Alarm Functions

More flexible recipes reduces programming effort

Recipes make it easy to make large numbers of tag changes with the push of a single button.

C-more provides tremendous flexibility and capacity to applications that require multiple recipes. It has a simple recipe button that supports 99 recipe sheets, each with 1000 recipes of 256 possible #tags or values. C-more recipe values can be modified and saved on the fly by the operator while the machine is running.

Spreadsheet-based Recipe Creation



Select tags with one click
Insert constant values or select a tag

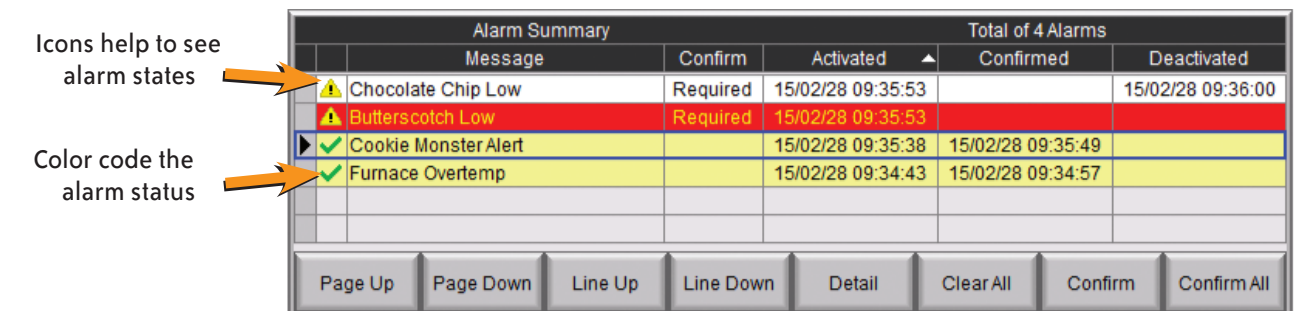
- New Recipe Database
- 99 recipe sheets
- 1000 recipes per recipe sheet
- 256 possible tags or values
- Load recipe data directly to PLC registers
- Operator editing of recipes while running



Alarm List Object offers detailed alarm management for operators

Alarms are used to notify operators of critical situations that may arise during a process. The Alarm List Object allows operator interaction with alarms that have occurred and allows operators to view, confirm or clear the alarms. Alarms can include specific messages with embedded PLC tag data as well as, date and time information for the alarm status. Alarm status can be color coded to help operators quickly interpret the status for each alarm.

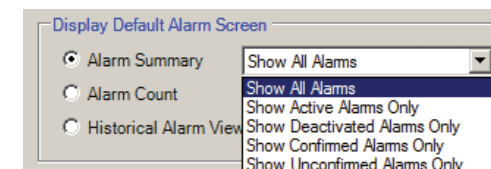
The Alarm List Object allows alarm details to be displayed and logged for future reference



Icons help to see alarm states

Color code the alarm status

The Alarm List Object can be filtered to show alarms based on status.

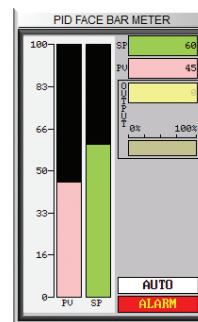
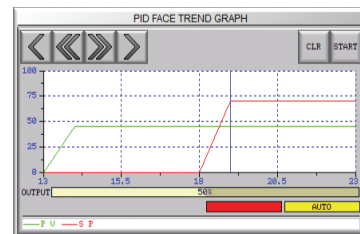
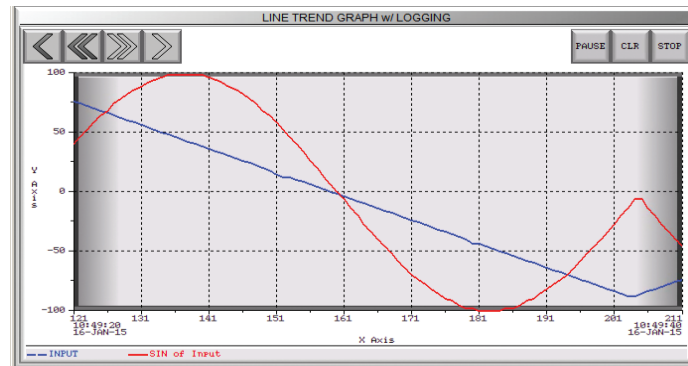


Trends, Logging and Control Options

Trend graphs, PID faceplates, true historical data logging

C-more's trend graph supports 16 pens, selectable to be hidden or shown by the operator. Show only the trends you wish to see, when you wish to see them. In addition, the full featured C-more units support data logging to SD cards or USB memory devices. Gigabytes of trend data can be stored,

limited only by you. The information can also be sent from C-more to your PC over the Internet, triggered by an event. C-more also has the standard PID faceplate and an enhanced version which shows trend data of the setpoint process variable and control variable.



- 16 pen trends
- PID faceplate
- PID with trend faceplate
- Each pen can be turned on/off
- True historical data logging



Log to SD card/USB



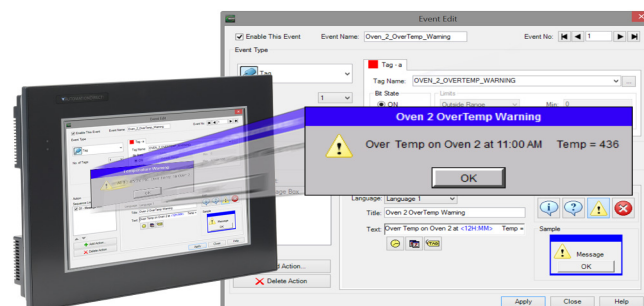
Pop-up windows for information and control

Use Pop-up Window Frames to overlay information or to provide extra controls on top of other screens. Operators can reposition the pop-up anywhere on the screen or close the pop-up when no longer required. Pop-up windows are created just like the other objects in the project, and can include a portion of any C-more screen (except other Pop-ups - no cascading available).



Pop-up Message Boxes for critical events

Create Pop-up Message Boxes in the Event Manager. You define the trigger criteria, and then select "Message Box" as the "action". You can type in a short message to appear in the box, and select an icon to display with your message. You can even include tag data, and date/time information in the message. The operator must click the OK button in order to clear the message box. You can also log an alarm at the same time the message box is activated via the event manager (along with many other actions).



Fonts and Animation

Built-in fonts

C-more has 14 different fonts for objects such as pushbuttons, indicators, meters and so on. These fonts are used for object-integrated labels and ON/OFF phrases for each of C-more's standard objects. Each font can be bolded, italicized and underlined. Fonts can be scaled to hundreds of sizes, giving you extreme flexibility.



Object Fonts



Bitmap Text Fonts

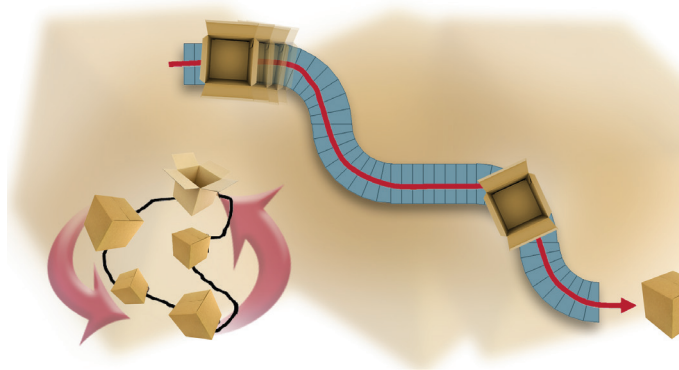
Built-in animation makes the process come to life

Virtually any bitmap object (from your PC hard drive, the built-in 4,000 symbol library, custom-drawn, etc.) can be animated to follow a straight line or a scribbled path. In addition, the object can change size or orientation (rotation).

Of course, the object can also do any combination of actions as well. Best of all, the animation process is very straightforward. You will be animating your first object in as little as a few minutes!

5 types of animation (any combination)

- Straight line... X or Y
- Scribbled path with up to 64 points
- Rotational
- Change size
- Multi-State Bitmap



A bitmap object (picture of cardboard box) follows a curving path along a conveyer (the path can be hidden). The box can rotate around the bends in the path and even change sizes. The bitmap changes toward the end to a closed box shape.

Axis Animation:

PLC tag values dictate the actual screen position of an object. Move objects along a single axis or use different tags for simultaneous X-Y position control.

Point Animation:

Define a path with up to 64 points for point-to-point object motion, or use "ratio" mode to move smoothly along a path. Scaling of PLC tag values to the path positions is optional.

Object Rotation:

Control rotation of an object based on the value of a PLC tag. Also allows scaling of tag values to angular values.

Object Size:

Control the size of an object based on PLC tag values. Independent X and Y-axis scaling of object size is possible, along with scaling of the tag values.

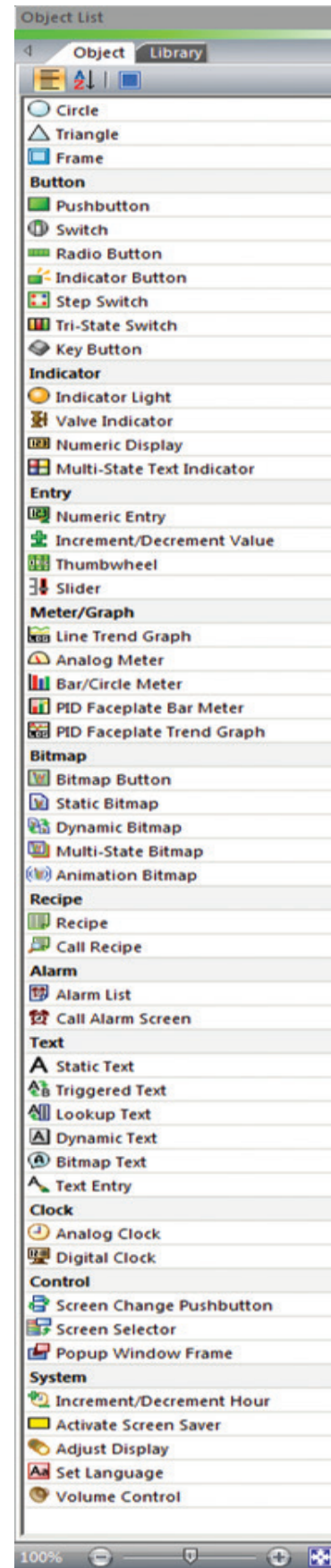
Multi-State Bitmap:

Use up to 16 different bitmap images to animate changes in the appearance of an object.

Benefit:

Animations of machine motion and factory processes enhance comprehension, and give operators a visual representation of the desired motion of products, and machinery on screen.

Wide Array of Objects and Customized Parts



Here are just a few of the more than 50 types of objects in the standard Object List

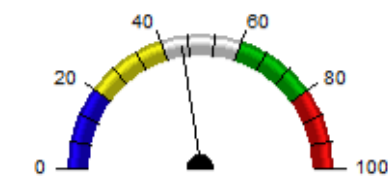
Pushbuttons



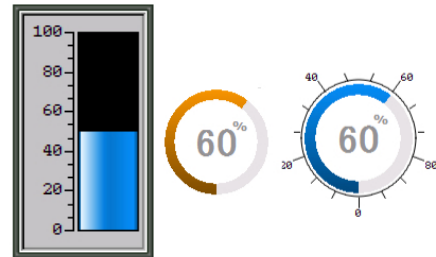
Indicator Lights



Analog Meters



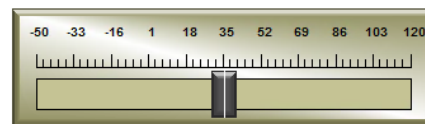
Bar/Circle Meter



Switches



Slider Switch

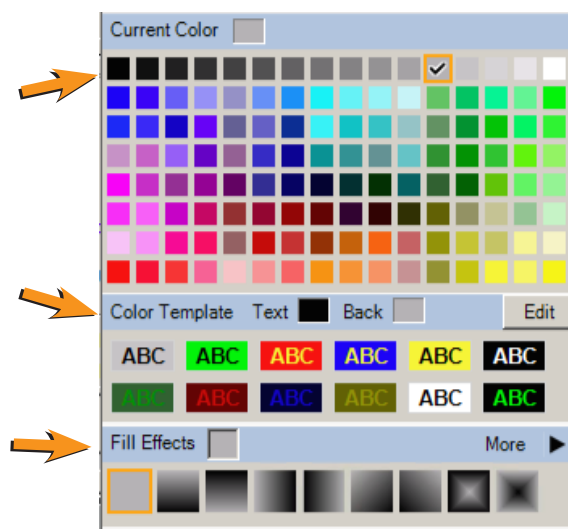


Personalize your screens

Object Format options make personalizing your screen objects simple. Select the colors, frames, and background effects with just a few clicks of the mouse.

Choose from the default color templates or create and save your own templates to use as often as you like.

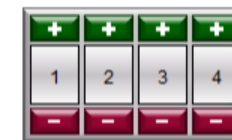
Backgrounds for many objects support gradient fill effects that make them stand out.



Tri-State Switch



Thumbwheel



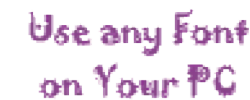
Dynamic Bitmap



Set Language

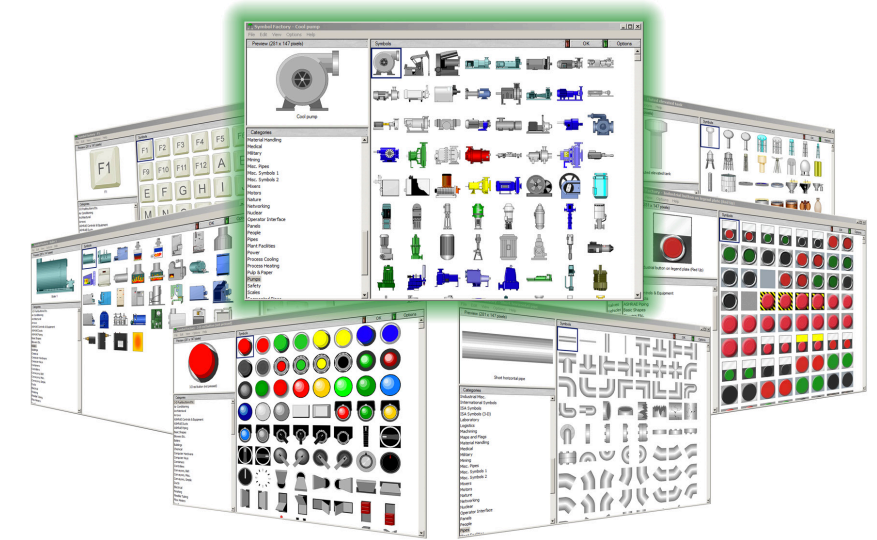


Bitmap Text



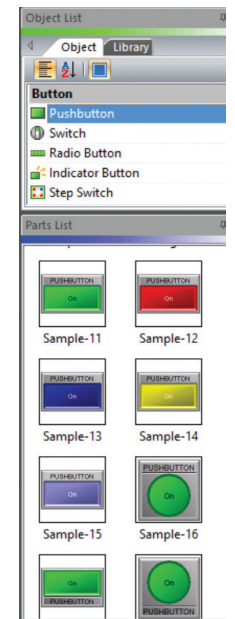
Over 4000 industrial graphics with Symbol Factory

Select from 80 different categories offering vector graphics that can be scaled up and down in size without loss in image quality. Free Cutaway Control is also included for doing tank type fills. If that is not enough, you can always use your own bitmap graphics with the same objects.



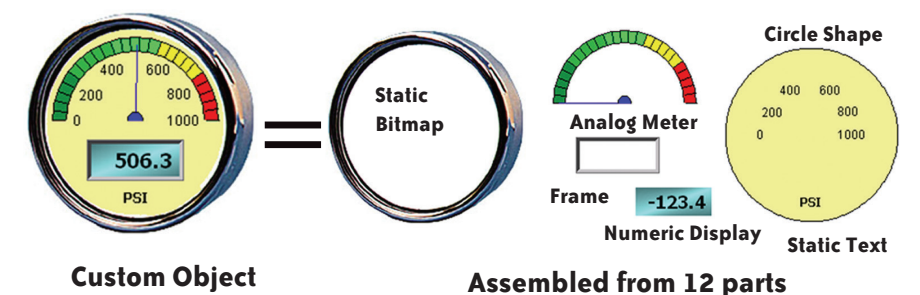
Hundreds of pre-configured parts

C-more also provides ready-made "parts" (versions of each default object) that are available to drag and drop into your project. Select any object to see preconfigured parts in the Parts List. Select the one that most closely matches your needs - and customize it even further, if you like. Then save it in the user library for future use.



Create custom objects

Use a combination of C-more objects and parts to create your own objects, or even entire sections of screens.



Custom Object

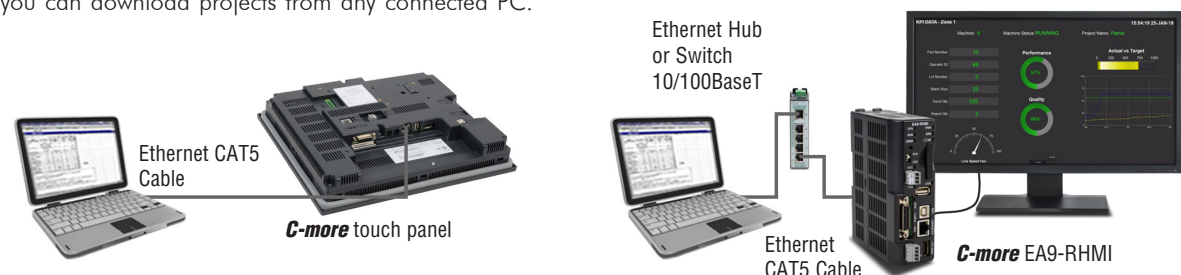
Assembled from 12 parts

more Built-in Convenience...

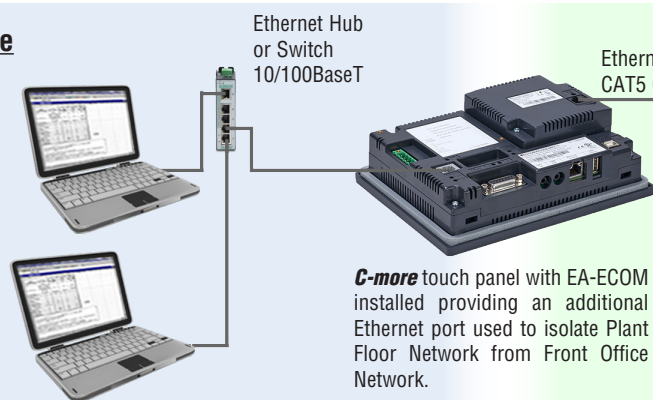
Network connections

C-more HMI's with Ethernet capabilities can be programmed via the built-in Ethernet port (the EA9-T6CL-R model does not support Ethernet). Connect directly from a PC to the C-more HMI, or connect one or more C-more HMI's to your plant network (via switches and routers). With C-more on the plant network, you can download projects from any connected PC.

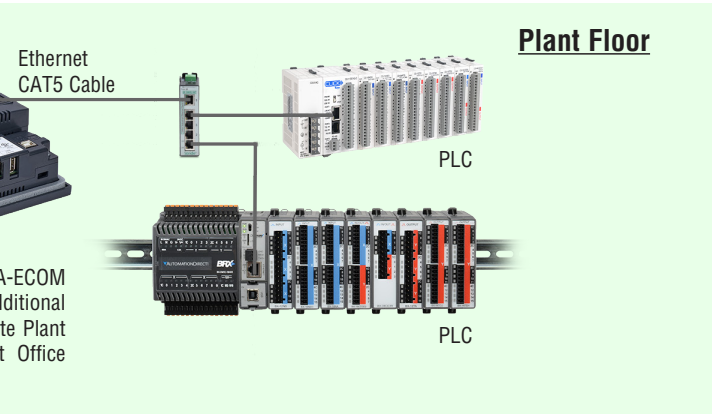
Use the network connection to upload alarm history, PLC/PAC log data or screen captures to a connected PC. C-more can send e-mail, based on events or PLC/PAC alarm conditions (if connected to a network and an SMTP (Simple Mail Transport Protocol) server).



Front Office



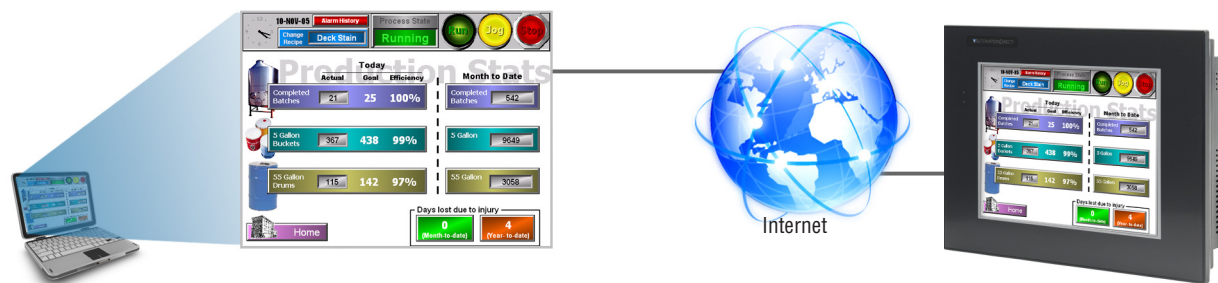
Plant Floor



C-more programming software with Internet connection

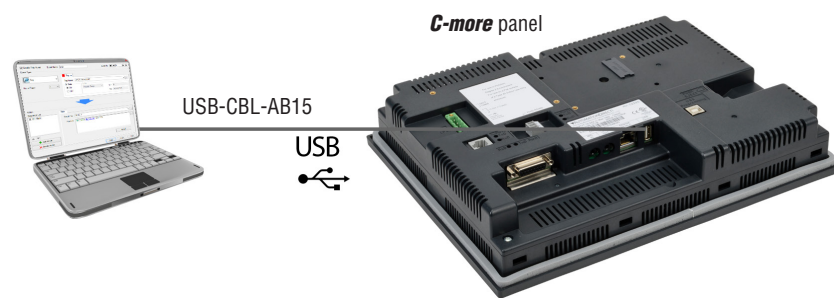
You can program your C-more HMI remotely via the Internet. All you need is a Public IP address assigned to the

C-more and a network that is accessible from the Internet.



USB programming

For convenient programming, use a standard USB cable between your C-more HMI and your PC. No baud-rate, parity, or stop bit settings to waste your time. USB is fast; most projects download in seconds. Don't pay inflated prices for proprietary programming cables! USB cables are inexpensive (we sell 'em!) and are readily available so you won't waste time looking for a special cable when your million-dollar operation is down.

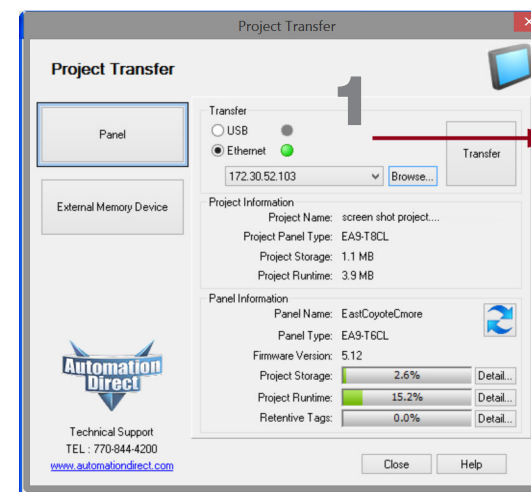


Updates using USB or SD Memory Devices

Update your HMI without a PC

Use SD memory cards or a USB flash drive to transfer projects to your HMI without having to connect the HMI to a PC. Perfect for updating remote C-more EA9 series interfaces, simply transfer the project to the SD memory card or the Pen Drive, take or send the flash device to the remote location, plug it into the HMI and transfer the project. This is also a convenient

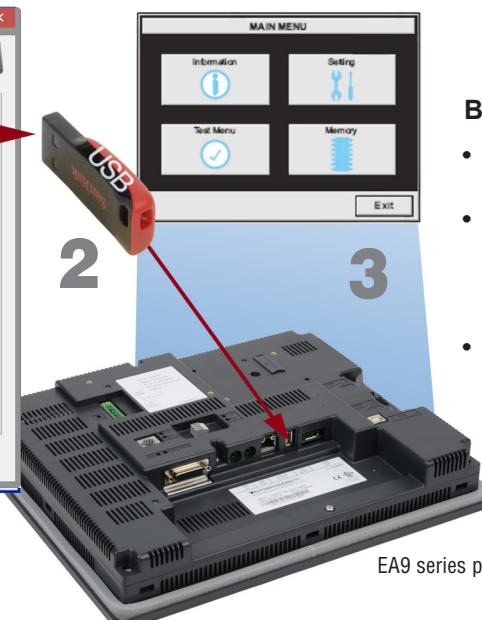
backup of your project, or for when a damaged HMI must be replaced. Send project updates to users who might not even have the programming software. Projects can be transferred onto the flash device, and restored to the HMI.



1 From the PC, transfer your project to an "External memory device"

2 Take (or send) the memory device to the HMI and plug it in

3 Use the C-more system screens to restore your project into the HMI memory



Benefits:

- No PC required
- Saves you from traveling to job site, which saves you money
- Allows the end user to safely load the project without the C-more programming software

Lots of memory for your project

C-more EA9 series interfaces start with a minimum of 26 MB of user project space on the 6-inch through 10-inch units, while the headless EA9-RHMI offers 43 MB and the 12-inch and 15-inch units supply 82 MB for project memory.

How about data storage? Many comparably priced touch panels offer no memory options or they support only proprietary memory cards. With C-more, all EA9 series models have a USB Port-A connector, and one SD card slot (12 and 15-inch panels include two SD card slots). This allows memory for data logging, screen captures, message logging and alarm logging.



more Remote HMI Options...



Touch your HMI from anywhere with Remote Access and Control!

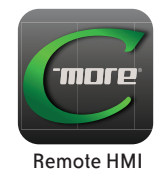
- No additional hardware required.
- The C-more Remote Access feature resides in all HMIs with Ethernet support, and requires no option modules.
- Access real-time data or initiate an action on a control system from anywhere, any time.

C-more from your PC

With a Web browser on any PC, remote users can operate and monitor a local C-more HMI system from anywhere on the Internet or on a local network.

C-more from your Mobile Device

Mobile users can download the FREE C-more Remote HMI app from the Apple iTunes store, Google Play, or Amazon App Store, to get remote access and control for Mobile devices.



Authorized users have the ability to remotely:

- Monitor and control screen operations of the C-more as if touching the screen itself
- Test and troubleshoot the C-more project
- View, zoom, print and save screen captures of active screens

Convenient yet secure

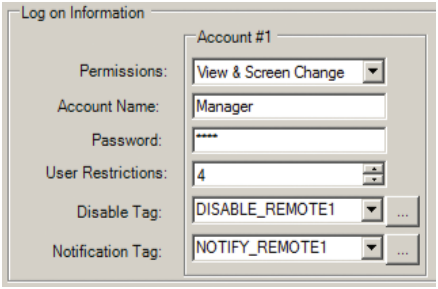
Multilevel Logon Security

Three Remote Access user accounts can be configured and stored in the project. Each account allows up to five remote users to be connected simultaneously.

Multilevel Access Control

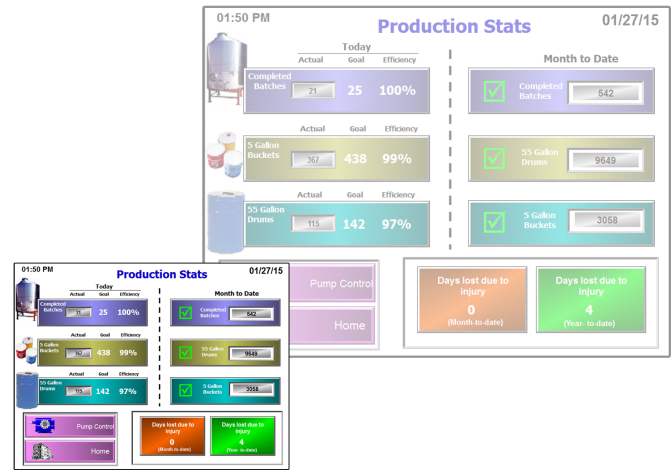
Each account can be configured in one of the following levels of access:

- View Only
- View and allow Screen Change only
- Full Control



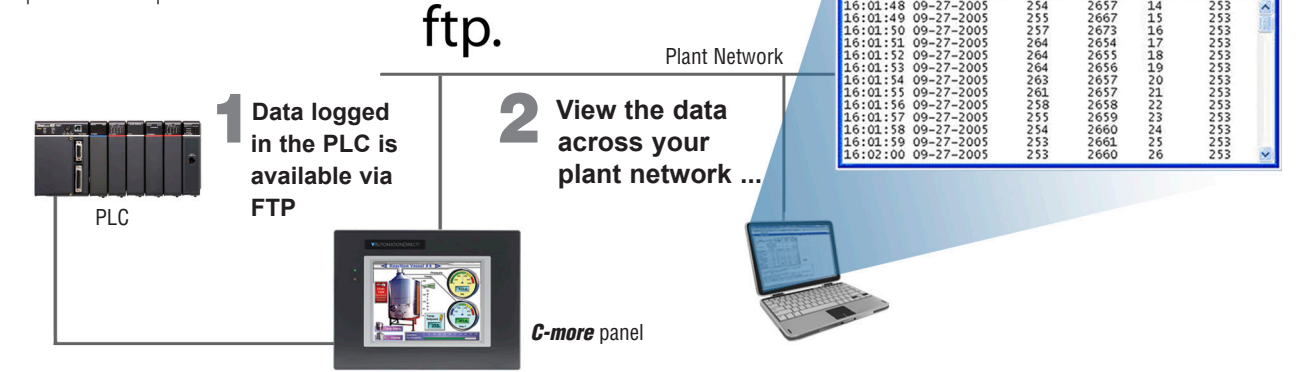
Resizable Window

Unlike many other remote access software brands, the C-more remote viewer is completely sizable. When the user shrinks or expands the browser window, the projects objects will rescale accordingly.



FTP Data Transfer

The FTP server (File Transfer Protocol) allows transfer of data files between C-more and any connected FTP compatible device (usually a PC). Your HMI can collect data and pass it to the PC on your desk, or to your corporate headquarters.

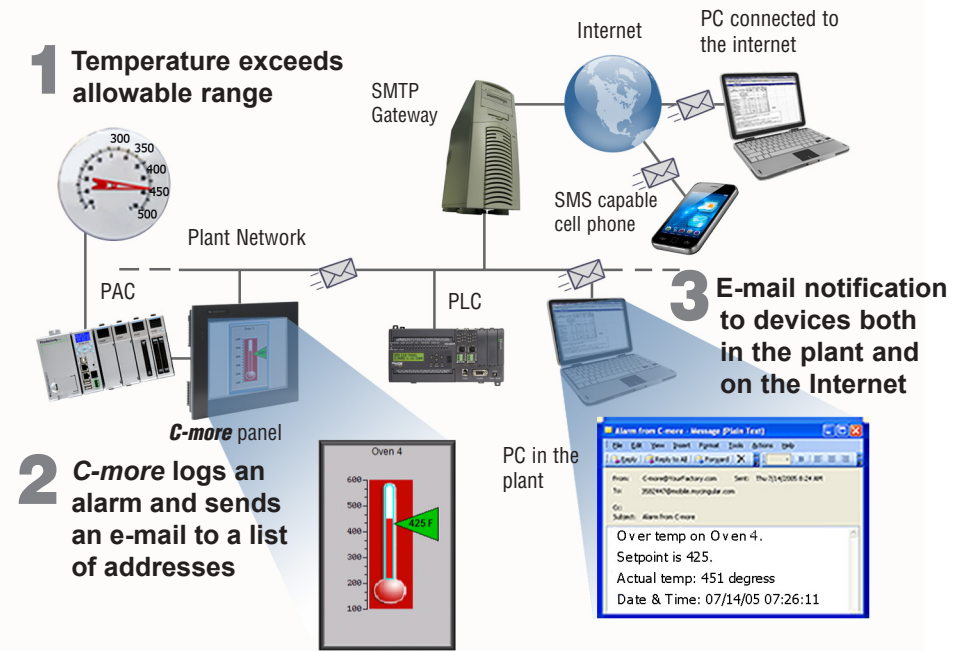


E-mail

Use the Event Manager to send e-mail periodically or when certain Alarms or Events occur. You can even attach log files to the e-mail message.

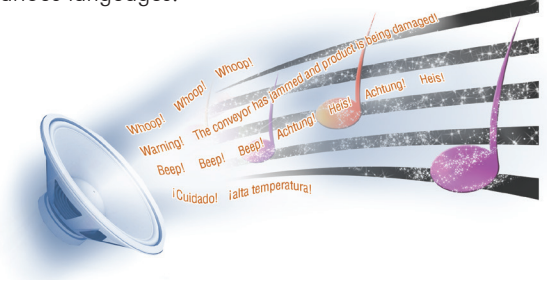
Operators can even key in a message and then press "Send".

C-more supports SSL and Tag based storage of e-mail address so that operators can update e-mail addresses without the programmer's support.



C-more and hear more!

C-more can play warning sounds and other .wav files via an external amplifier and loudspeakers (user supplied). Use sirens, buzzers or beeping sounds to draw attention to alarm conditions. Even pre-recorded verbal messages can be triggered to speak to your operators in various languages.



HDMI Video Output

Connect your HDMI TV or monitor to the C-more HDMI video output to display your screens in full HD.

Mouse support allows any HDMI compatible device to function as a machine interface. (HDMI support only on the headless EA9-RHMI, 12-inch and 15-inch enhanced C-more panels).

