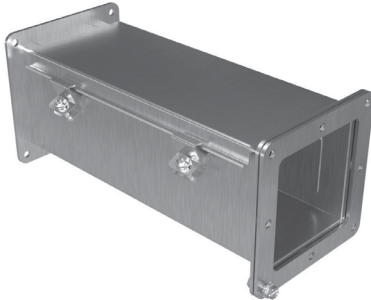


NEMA 4, 4X, & 12 Stainless Steel Pull-Through Wireway



Features

- Designed to enclose and protect electrical wiring from dirt, dust, oil and water.
- Ideal for connecting machines to control panels or power sources.



Construction

- Bodies and covers are formed from 14-gauge 304 steel with 10-gauge steel flanges.
- Continuous flange around wireway ends, requires cables to be pulled through.
- Smooth continuously welded seams.
- Interior surfaces are smooth to prevent wire damage during installation.
- Butt-hinged cover is secured with easily operated screw clamps.
- Solid, oil-resistant gaskets are permanently secured between flanges when sections and fittings are bolted together.
- One gasket kit, complete with hardware is provided with each straight section or fitting.
- Sections and fittings are natural stainless steel with a smooth brushed finish.

E186830]

- CSA Type 1 (unless marked) [File LL21312]
- Complies with
 - NEMA Type 4, 4X and 12
 - IEC 60529, IP66



Listings

- UL 870 Type 1 (unless marked) [File

Shipping Schedule	
Same day	1 - 15 days
Color indicates shipping lead time in business days.	

NEMA 4, 4X, & 12 Stainless Steel Pull-Through Wireway			
Part Number	Price	Size HxW	Drawing Link
1487C12SS	\$230.00	4 x 4 x 12 [102 x 102 x 305]	PDF
1487C24SS	\$286.00	4 x 4 x 24 [102 x 102 x 610]	PDF
1487C36SS	\$348.00	4 x 4 x 36 [102 x 102 x 914]	PDF
1487C48SS	\$410.00	4 x 4 x 48 [102 x 102 x 1219]	PDF
1487C60SS	\$472.00	4 x 4 x 60 [102 x 102 x 1524]	PDF
1487C120SS	\$785.00	4 x 4 x 120 [102 x 102 x 3048]	PDF
1487D12SS	\$294.00	6 x 6 x 12 [152 x 152 x 305]	PDF
1487D24SS	\$383.00	6 x 6 x 24 [152 x 152 x 610]	PDF
1487D36SS	\$483.00	6 x 6 x 36 [152 x 152 x 914]	PDF
1487D48SS	\$581.00	6 x 6 x 48 [152 x 152 x 1219]	PDF
1487D60SS	\$680.00	6 x 6 x 60 [152 x 152 x 1524]	PDF
1487D120SS	\$1,176.00	6 x 6 x 120 [152 x 152 x 3048]	PDF
1487E12SS	\$324.00	8 x 8 x 12 [203 x 203 x 305]	PDF
1487E24SS	\$423.00	8 x 8 x 24 [203 x 203 x 610]	PDF
1487E36SS	\$533.00	8 x 8 x 36 [203 x 203 x 914]	PDF
1487E48SS	\$642.00	8 x 8 x 48 [203 x 203 x 1219]	PDF
1487E60SS	\$750.00	8 x 8 x 60 [203 x 203 x 1524]	PDF
1487E120SS	\$1,298.00	8 x 8 x 120 [203 x 203 x 3048]	PDF

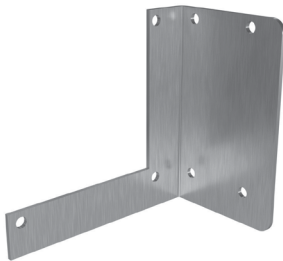
NEMA 4, 4X, & 12 304 Stainless Steel Pull-Through Wireway Hangers



Shipping Schedule	
Same day	1 - 15 days
Color indicates shipping lead time in business days.	



Drop Hangers			
Part Number	Price	Wireway Size	Drawing Link
1487CL1SS	\$45.50	4 x 4 [102 x 102]	PDF
1487DL1SS	\$62.00	6 x 6 [152 x 152]	PDF
1487EL1SS	\$68.50	8 x 8 [203 x 203]	PDF



Bracket Hangers			
Part Number	Price	Wireway Size	Drawing Link
1487CL2SS	\$29.50	4 x 4 [102 x 102]	PDF
1487DL2SS	\$41.50	6 x 6 [152 x 152]	PDF
1487EL2SS	\$45.50	8 x 8 [203 x 203]	PDF

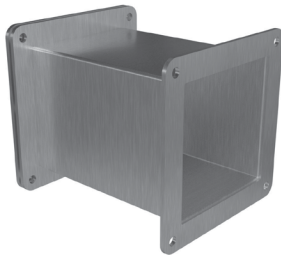
NEMA 4, 4X, & 12 Stainless Steel Pull-Through Wireway Fittings



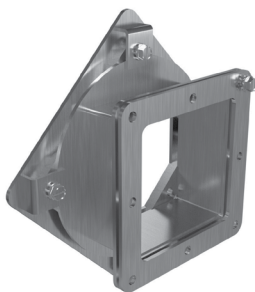
Partition Kit			
Part Number	Price	Wireway Size	Drawing Link
1487CB60	\$38.50	4 x 4 x 60 [102 x 102 x 1524]	PDF
1487DB60	\$47.00	6 x 6 x 60 [152 x 152 x 1524]	PDF
1487EB60	\$63.50	8 x 8 x 60 [203 x 203 x 1524]	PDF

Features

- Made of Carbon Steel painted ANSI 61 Gray
- Divides Wireway into two or more compartments.
- Barriers are fastened to wireway sections with screws.
- Does not meet CSA or UL requirements.



Nipple			
Part Number	Price	Overall Size HxWxD	Drawing Link
1487CM6SS	\$158.00	4 x 4 x 6 [102 x 102 x 152]	PDF
1487DM6SS	\$202.00	6 x 6 x 6 [152 x 152 x 152]	PDF
1487EM6SS	\$223.00	8 x 8 x 6 [203 x 203 x 152]	PDF



Swivel Nipple			
Part Number	Price	Size HxWxD	Drawing Link
1487CV2SS	\$232.00	6 x 6 x 2.25 [152 x 152 x 57]	PDF
1487DV2SS	\$310.00	4 x 4 x 2.25 [102 x 102 x 57]	PDF
1487EV2SS	\$341.00	8 x 8 x 2.25 [203 x 203 x 57]	PDF



Flexible Fitting			
Part Number	Price	Overall Size HxWxD	Drawing Link
1487CFSS	\$369.00	4 x 4 [102 x 102]	PDF
1487DFSS	\$465.00	6 x 6 [152 x 152]	PDF
1487EFSS	\$514.00	8 x 8 [203 x 203]	PDF

Features

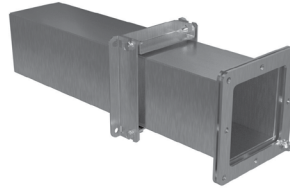
- Allows for easy alignment of sections or fittings.
- Metal flanges.
- Flexible "bellows" middle section.

NEMA 4, 4X, & 12 Stainless Steel Pull-Through Wireway Fittings

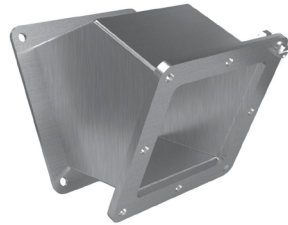


Features

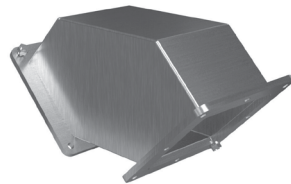
- Allows on site length adjustment of 1.5in to 13.5in. [38mm to 343mm]
- Does not meet CSA or UL requirements.



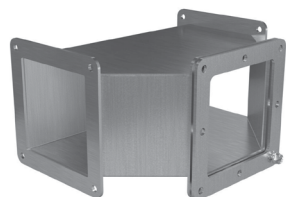
Adjustable Fitting			
Part Number	Price	Wireway Size	Drawing Link
1487CXSS	\$234.00	4 x 4in	PDF
1487DXSS	\$287.00	6 x 6in	PDF
1487EXSS	\$317.00	8 x 8in	PDF



45° Elbow			
Part Number	Price	Wireway Size	Drawing Link
1487C4PSS	\$217.00	4 x 4in	PDF
1487D4PSS	\$267.00	6 x 6in	PDF
1487E4PSS	\$294.00	8 x 8in	PDF



90° Elbow			
Part Number	Price	Wireway Size	Drawing Link
1487C9PSS	\$211.00	4 x 4in	PDF
1487D9PSS	\$259.00	6 x 6in	PDF
1487E9PSS	\$286.00	8 x 8in	PDF



Tee Fitting			
Part Number	Price	Wireway Size	Drawing Link
1487CTSS	\$253.00	4 x 4in	PDF
1487DTSS	\$360.00	6 x 6in	PDF
1487ETSS	\$397.00	8 x 8in	PDF

NEMA 4, 4X, & 12 Stainless Steel Pull-Through Wireway Fittings

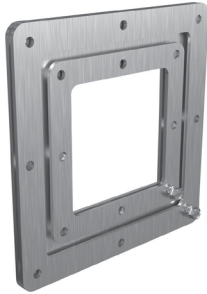


Box Connector			
<i>Part Number</i>	<i>Price</i>	<i>Wireway Size</i>	<i>Drawing Link</i>
1487CKSS	\$45.00	4 x 4in	PDF
1487DKSS	\$56.00	6 x 6in	PDF
1487EKSS	\$62.00	8 x 8in	PDF



Cover Plate			
<i>Part Number</i>	<i>Price</i>	<i>Wireway Size</i>	<i>Drawing Link</i>
1487CHSS	\$41.00	4 x 4in	PDF
1487DHSS	\$49.00	6 x 6in	PDF
1487EHSS	\$54.00	8 x 8in	PDF

NEMA 4, 4X, & 12 Stainless Steel Pull-Through Wireway Fittings and Accessories



Center Hole Reducers			
Part Number	Price	Wireway Size	Drawing Link
1487DRCSS	\$101.00	6 x 6in to 4 x 4in	PDF
1487ERCDS	\$112.00	8 x 8in to 6 x 6in	PDF
1487ERCCS	\$112.00	8 x 8in to 4 x 4in	PDF



Edge Hole Wireway Reducers			
Part Number	Price	Wireway Size	Drawing Link
1487ERECSS	\$112.00	8 x 8in to 4 x 4in	PDF
1487EREDSS	\$112.00	8 x 8in to 6 x 6in	PDF
1487DRESS	\$101.00	6 x 6in to 4 x 4in	PDF



Gaskets & Screws			
Part Number	Price	Wireway Size	Drawing Link
1487CS	\$11.75	4 x 4in	PDF
1487DS	\$15.50	6 x 6in	PDF
1487ES	\$17.25	8 x 8in	PDF

Note: Does not meet CSA or UL requirements