

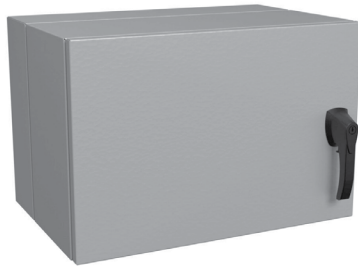
# Eclipse Series NEMA 3R, 4, & 12 Wall Mount Swing-Out Enclosure with 19-Inch Rack



Designed for housing network access equipment in harsh environments using 19in mounting rails, the EN4DH Series features dual access to both front and rear of the equipment that allows for easy install and connection between the main cable route and equipment. The UL and CSA tested NEMA ratings provide outstanding protection against dust, oil and water with both solid and window door options.

## Features

- Dual access to equipment via the double hinge design.
- Allows for 120 degrees of access to both front and rear of equipment allowing for easy maintenance.
- Heavy-duty wall mounting back pan can be used for cable entry and includes collar stud provision for optional inner panel.
- Back pan can be mounted with optional external mounting feet.
- Interior latch releases the center section for added security, no tools required.
- Both solid and window door options include a combination key and padlock handle for added security.
  - 1 pair tapped 10-32 L rails with cable pass through are included.
- Includes starter pack (25) 10-32 screws.
- Rails are adjustable and can be installed at your desired location.
  - Additional rails are available and sold separately.
- Bonding studs provided on door, body and back pan.



## Construction

- Back pan, body and doors are made from 14-gauge steel.
- Smooth continuous welded seams without knockouts, cutouts or holes.
- Seamless poured-in place gasket for added protection in indoor and outdoor environments.
- Window door constructed with UV-resistant polycarbonate material.
- Zinc-plated rack rails are drilled and tapped 10-32 to EIA 19in standards.
- 25 pack of 10-32 mounting hardware is included.
- Finished in a textured RAL7035 light gray powder coat.

## Listings

- TAA compliant for GSA Schedule purchases.
- UL 508A Type 1, 3, 3R, 4, 12 [File: E65324]
- CSA Type 1, 3, 3R, 4, 12 [File: LR21001]
- IEC 60529, IP66

Shipping Schedule	
Same day	1 - 15 days
Color indicates shipping lead time in business days.	



Solid Eclipse Series NEMA 3R, 4, & 12 Wall Mount Swing-Out Enclosure with 19-Inch Rack				
Part Number	Price	Rack Units	Overall Size HxWxD	Drawing Link
<b>EN4DH162415LG</b>	\$1,133.00	7U	16.00 x 24.00 x 15.00 [406 x 610 x 381]	<a href="#">PDF</a>
<b>EN4DH162424LG</b>	\$1,313.00	7U	16.00 x 24.00 x 24.00 [406 x 610 x 610]	<a href="#">PDF</a>
<b>EN4DH202424LG</b>	\$1,483.00	10U	20.00 x 24.00 x 24.00 [508 x 610 x 610]	<a href="#">PDF</a>
<b>EN4DH242424LG</b>	\$1,551.00	12U	24.00 x 24.00 x 24.00 [610 x 610 x 610]	<a href="#">PDF</a>
<b>EN4DH362424LG</b>	\$1,609.00	19U	36.00 x 24.00 x 24.00 [914 x 610 x 610]	<a href="#">PDF</a>
<b>EN4DH482424LG</b>	\$1,953.00	26U	48.00 x 24.00 x 24.00 [1219 x 610 x 610]	<a href="#">PDF</a>

Note: Dimensions in inches [millimeters].

Eclipse Series NEMA 3R, 4, & 12 Wall Mount Swing-Out Enclosure with 19-Inch Rack with Window				
Part Number	Price	Rack Units	Overall Size HxWxD	Drawing Link
<b>EN4DH162415WLG</b>	\$1,188.00	7U	16.00 x 24.00 x 15.00 [406 x 610 x 381]	<a href="#">PDF</a>
<b>EN4DH162424WLG</b>	\$1,406.00	7U	16.00 x 24.00 x 24.00 [406 x 610 x 610]	<a href="#">PDF</a>
<b>EN4DH202424WLG</b>	\$1,563.00	10U	20.00 x 24.00 x 24.00 [508 x 610 x 610]	<a href="#">PDF</a>
<b>EN4DH242424WLG</b>	\$1,625.00	12U	24.00 x 24.00 x 24.00 [610 x 610 x 610]	<a href="#">PDF</a>
<b>EN4DH362424WLG</b>	\$1,688.00	19U	36.00 x 24.00 x 24.00 [914 x 610 x 610]	<a href="#">PDF</a>
<b>EN4DH482424WLG</b>	\$2,031.00	26U	48.00 x 24.00 x 24.00 [1219 x 610 x 610]	<a href="#">PDF</a>

Note: Dimensions in inches [millimeters].