

30mm Pushbutton NEMA 4, 12 and 13 Wall Mount



Applications

Designed to hold all standard 30mm brands of pushbuttons, switches and pilot lights. Provides protection from dirt, dust, oil and water.

Construction

- Bodies and doors fabricated from 14 gauge steel
- Closed cell oil resistant neoprene gasket
- Continuously welded seams ground smooth
- External mounting feet, top and bottom of enclosure
- Captivated cover screws thread into sealed wells
- Standard "4-way" pushbutton holes accept all brands of oil-tight pushbuttons, switches and pilot lights
- Enclosures 9.50" x 6.25" x 3.09" and larger have internal detachable hinges to hold cover open during wiring, yet permit quick removal
- Grounding provisions provided

Finish

- ANSI 61 gray polyester powder inside and out over phosphatized surfaces

Listings

- UL 508, Types 4, 12 & 13 [UL File E64791]
- NEMA/EEMAC Types 4, 12 & 13
- PB16(BC) & PB25(BC) meet NEMA 12 only



Enclosure Shipping Schedule

Same day	1 - 5 days	1 - 7 days	1 - 10 days	1 - 15 days	1 - 20 days
----------	------------	------------	-------------	-------------	-------------

Color indicates shipping lead time in business days.

30mm Pushbutton NEMA 4, 12 and 13 Wall Mount

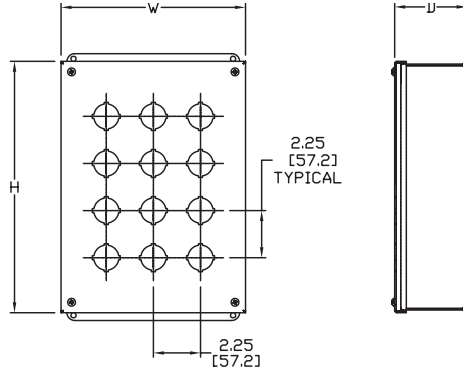
Pushbutton Enclosure	Price	With Blank Cover	Price	# Holes	Enclosure Size HxWxD
PB1	\$51.00	PB1BC	\$51.00	1	3.76 x 3.56 x 3.14 [96 x 90 x 80]
PB2	\$58.00	PB2BC	\$59.00	2	6.01 x 3.56 x 3.10 [153 x 90 x 79]
PB3	\$65.00	PB3BC	\$67.00	3	8.26 x 3.56 x 3.10 [210 x 90 x 79]
PB4	\$73.00	PB4BC	\$73.00	4	10.51 x 3.56 x 3.10 [267 x 90 x 79]
PB4S	\$83.00	PB4SBC	\$71.00	4	7.51 x 6.56 x 3.38 [191 x 167 x 86]
PB5	\$80.00	PB5BC	\$80.00	5	12.76 x 3.56 x 3.10 [324 x 90 x 79]
PB6	\$94.00	PB6BC	\$94.00	6	9.76 x 6.56 x 3.38 [248 x 167 x 86]
PB6VL	\$89.00	PB6VLBC	\$89.00	6	15.01 x 3.56 x 3.10 [381 x 90 x 79]
PB8	\$107.00	PB8BC	\$105.00	8	20.51 x 3.56 x 3.10 [521 x 90 x 79]
PB9	\$109.00	PB9BC	\$97.00	9	9.76 x 8.81 x 3.38 [248 x 224 x 86]
PB10	\$122.00	PB10BC	\$113.00	10	25.01 x 3.56 x 3.14 [635 x 90 x 80]
PB12	\$124.00	PB12BC	\$124.00	12	12.01 x 8.81 x 3.38 [305 x 224 x 86]
PB16*	\$139.00	PB16BC	\$139.00	16	12.01 x 11.06 x 3.38 [305 x 281 x 86]
PB25*	\$175.00	PB25BC	\$175.00	25	14.26 x 13.31 x 3.38 [362 x 338 x 86]

Notes: Dimensions in inches [millimeters]. Letters in table correspond to letters on dimensional drawings.
 Letters in table correspond to letters on dimensional drawings.
 *Only meets N12.

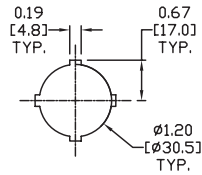
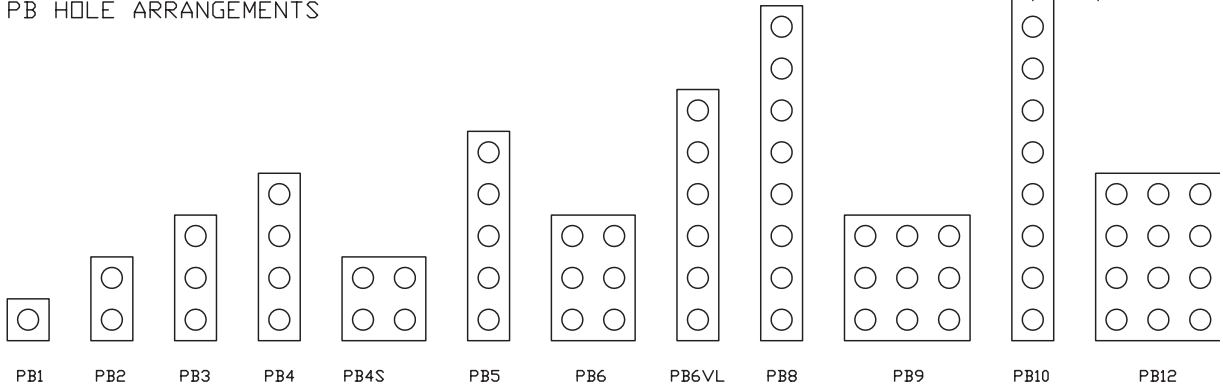
30mm Pushbutton NEMA 4, 12 and 13 Wall Mount

Dimensions

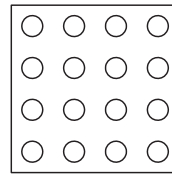
in [mm]



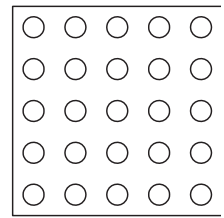
PB HOLE ARRANGEMENTS



STANDARD 4-WAY
PUSHBUTTON



PB16



PB25

See our website: www.AutomationDirect.com for complete engineering drawings.