

30mm Pushbutton NEMA 12 and 13 Slim Line Wall Mount



Applications

Designed to hold all standard 30mm brands of pushbuttons, switches and pilot lights. Provides protection from dirt, dust, oil and water. This slimline model is designed for conditions where enclosures must fit within very limited areas.

Finish

- ANSI 61 gray polyester powder inside and out over phosphatized surfaces

Listings

- UL 508, Types 12 & 13 [UL File E64791]
- NEMA/EEMAC Types 12 & 13

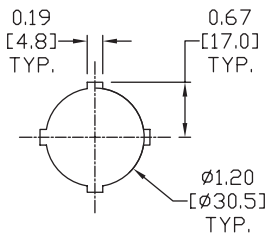
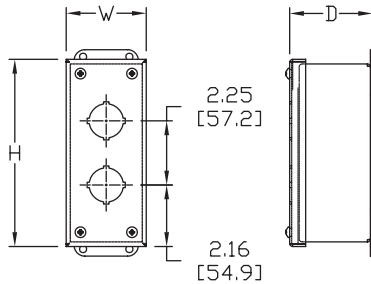


Construction

- Fabricated from 14 gauge steel
- Closed cell oil-resistant neoprene gasket
- Continuously welded seams ground smooth
- External mounting feet, top and bottom of enclosure
- Captivated cover screws thread into sealed wells
- Standard "4-way" pushbutton holes accept all brands of oil-tight pushbuttons, switches and pilot lights
- Grounding provisions provided

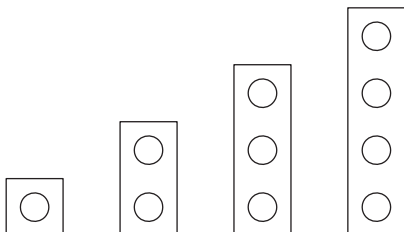
Dimensions

in [mm]



STANDARD 4-WAY PUSHBUTTON

PB HOLE ARRANGEMENTS



PSL1 PSL2 PSL3 PSL4

Enclosure Shipping Schedule					
Same day	1 - 5 days	1 - 7 days	1 - 10 days	1 - 15 days	1 - 20 days

Color indicates shipping lead time in business days.

30mm Pushbutton NEMA 12 and 13 Slim Line Wall Mount			
Part Number	Price	# Holes	Size HxWxD
PSL1	\$46.50	1	4.32 x 2.81 x 2.83 [110 x 71 x 72]
PSL2	\$52.00	2	6.57 x 2.81 x 2.83 [167 x 71 x 72]
PSL3	\$58.00	3	8.82 x 2.81 x 2.83 [224 x 71 x 72]
PSL4	\$65.00	4	11.07 x 2.81 x 2.83 [281 x 71 x 72]

Notes: Dimensions in inches [millimeters].

See our website: www.AutomationDirect.com for complete engineering drawings.