

WC9 NEMA 12 and 13 Operator Consoles



Applications

Designed to house electrical and electronic controls, instruments and components. Heavy duty construction provides protection from dirt, dust, oil and water. Sloping front control panel provides an ideal surface for mounting pushbuttons, pilot lights, meters and switches. Interior components can be mounted on panels located on the sides and back of the enclosure. (Subpanels are optional.)

Construction

- Bodies and doors fabricated from 14 gauge steel
- Continuously welded seams ground smooth, without knockouts or holes
- Control panel attached with continuous hinge along bottom edge and secured with captive screws, threaded into sealed wells
- Door stops provided to hold control panel open
- Closed cell neoprene gasket
- Collar studs provided for mounting one, two or three optional panels
- Grounding provisions provided
- 3-point keylocking handle is provided on the front access door
- [Uses WAL2 series handles and WAL2KEY replacement key](#)

Finish

- ANSI 61 gray polyester powder inside and out over phosphatized surfaces
- Optional side and back panels are white polyester powder over phosphatized surfaces
- Optional castor kits can be used on any enclosure to provide mobility.
- Castor kit includes two swivel casters and two stationary casters along with all necessary hardware

Listings

- UL 508, Types 12 & 13 [UL File E64791]
- NEMA/EEMAC Types 12 & 13



Enclosure Shipping Schedule					
Same day	1 - 5 days	1 - 7 days	1 - 10 days	1 - 15 days	1 - 20 days

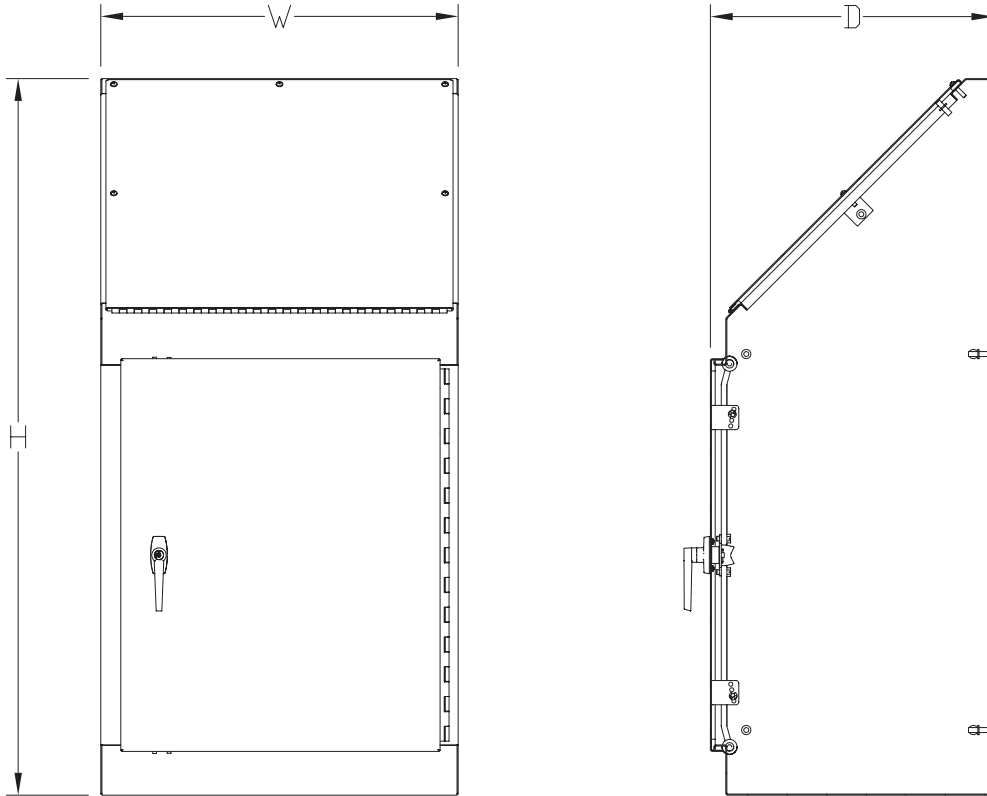
Color indicates shipping lead time in business days.

WC9 NEMA 12 and 13 Operator Consoles					
Console	Price	Size HxWxD	Subpanel*	Side-mount Panel*	Caster Kit*
WC924B	\$1,990.00	48.13 x 24.00 x 19.03 [1223 x 610 x 483]	NP3020	NP3020	WC10C
WC936B	\$2,440.00	48.13 x 36.00 x 19.03 [1223 x 914 x 483]	NP3030	NP3020	WC10C

Notes: Dimensions in inches [millimeters].
Letters in table correspond to letters on dimensional drawings.
*Subpanels, side-mount panels and caster kits must be ordered separately.

WC9 NEMA 12 and 13 Operator Consoles

Dimensions



See our website: www.AutomationDirect.com for complete engineering drawings.

Enclosure Subpanels

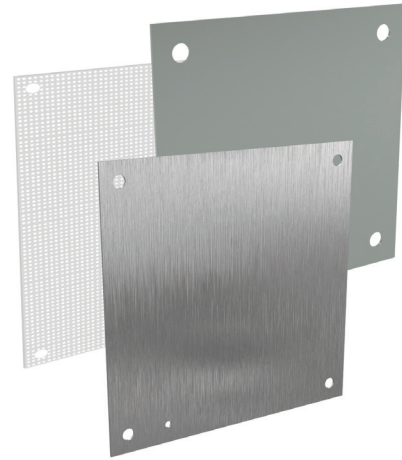
Subpanels for NEMA 1, 12, 4 and 4X Wall Mount Enclosures and WC9 NEMA 12 Operator Consoles

- 12 gauge steel (perforated subpanels are 14 gauge)
- Subpanels with any side over 17" have 3/4" flange on all sides
- Painted steel and perforated subpanels are white polyester powder over phosphatized surfaces
- Galvanized subpanels have a conductive finish (no paint)

Panels listed fit the following enclosures:

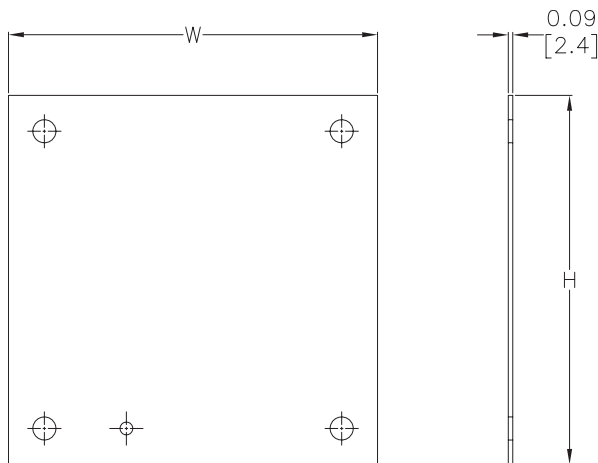
- NEMA 1 large (N1C, 42in width and wider)
- NEMA 12 single door wall mount (N12)
- NEMA 12 two door wall mount (WA_WF)
- NEMA 12 single door flush wall mount (WA_FM)
- NEMA 4 (N4) and 4X (SSN) single door wall mount
- NEMA 12 operator consoles (WC9)
- NEMA 12 Wall Disconnect (SDN12_PL & ABN12)
- NEMA 4 & 4X Wall Mount Disconnect (SSN4 & SSN4X)

NOTE: Use NPxxxx subpanels in NEMA 1, NEMA 4 and 4X, and NEMA 12 enclosures only. Do NOT use NPxxxx subpanels in N412 Ultimate Series enclosures with a C in the suffix.



Dimensions

in [mm]



Perforated panels have 0.13" diameter holes at 0.25" spacing.

NOTE:
SUBPANELS LARGER THAN
20 X 20 HAVE (2) 0.31"
GROUND HOLES.

See our website: www.AutomationDirect.com for complete engineering drawings.

Enclosures Subpanels



Enclosure Shipping Schedule					
Same day	1 - 5 days	1 - 7 days	1 - 10 days	1 - 15 days	1 - 20 days

Color indicates shipping lead time in business days.

Subpanels for NEMA 1, 12, 4 and 4X Wall Mount Enclosures and WC9 NEMA 12 Operator Consoles									
Painted Steel	Price	Galvanized	Price	Perforated	Price	304 Stainless Steel	Price	Nominal Enclosure Size HxW	Subpanel Size AxB
NP1212	\$13.50	NP1212G	\$17.50	-	-	-	-	12 x 12	9.00 x 9.00 [229 x 229]
NP1224	\$33.50	NP1224G	\$33.50	-	-	-	-	24 x 12	9.00 x 21.00 [229 x 533]
NP1612	\$24.00	NP1612G	\$24.00	NP1612PP	\$24.00	NP1612SS	\$64.00	12 x 16 16 x 12	13.00 x 9.00 [330 x 229]
NP1616	\$29.50	NP1616G	\$29.50	NP1616PP	\$29.50	NP1616SS	\$77.00	16 x 16	13.00 x 13.00 [330 x 330]
NP2012	\$28.00	NP2012G	\$28.00	-	-	-	-	12 x 20 20 x 12	17.00 x 9.00 [432 x 229]
NP2016	\$35.00	NP2016G	\$35.00	NP2016PP	\$35.00	NP2016SS	\$94.00	20 x 16 16 x 20	17.00 x 13.00 [432 x 330]
NP2020	\$42.50	NP2020G	\$42.50	NP2020PP	\$42.50	NP2020SS	\$121.00	20 x 20	17.00 x 17.00 [432 x 432]
NP2416	\$41.00	NP2416G	\$41.00	-	-	NP2416SS	\$116.00	24 x 16	21.00 x 13.00 [533 x 330]
NP2420	\$55.00	NP2420G	\$55.00	NP2420PP	\$55.00	NP2420SS	\$147.00	20 x 24 24 x 20	21.00 x 17.00 [533 x 432]
NP2424	\$63.00	NP2424G	\$63.00	NP2424PP	\$63.00	NP2424SS	\$171.00	24 x 24	21.00 x 21.00 [533 x 533]
NP3016	\$55.00	NP3016G	\$55.00	-	-	-	-	30 x 16	27.00 x 13.00 [686 x 330]
NP3020	\$66.00	NP3020G	\$66.00	-	-	NP3020SS	\$182.00	30 x 20	27.00 x 17.00 [686 x 432]
NP3024	\$77.00	NP3024G	\$77.00	NP3024PP	\$77.00	NP3024SS	\$207.00	24 x 30 30 x 24	27.00 x 21.00 [686 x 533]
NP3030	\$108.00	NP3030G	\$108.00	NP3030PP	\$108.00	NP3030SS	\$306.00	30 x 30	27.00 x 27.00 [686 x 686]
NP3624	\$92.00	NP3624G	\$92.00	NP3624PP	\$92.00	NP3624SS	\$261.00	36 x 24	33.00 x 21.00 [838 x 533]
NP3630	\$122.00	NP3630G	\$122.00	NP3630PP	\$122.00	NP3630SS	\$324.00	30 x 36 36 x 30	33.00 x 27.00 [838 x 686]
NP3636	\$144.00	NP3636G	\$144.00	NP3636PP	\$144.00	NP3636SS	\$392.00	36 x 36	33.00 x 33.00 [838 x 838]
NP4024	\$110.00	-	-	-	-	-	-	40 x 24	37.00 x 21.00 [940 x 533]
NP4224	\$105.00	NP4224G	\$105.00	-	-	-	-	42 x 24	39.00 x 21.00 [991 x 533]
NP4230	\$140.00	NP4230G	\$140.00	NP4230PP	\$140.00	NP4230SS	\$381.00	42 x 30	39.00 x 27.00 [991 x 686]
NP4236	\$165.00	NP4236G	\$165.00	NP4236PP	\$165.00	NP4236SS	\$457.00	42 x 36	39.00 x 33.00 [991 x 838]
NP4824	\$119.00	NP4824G	\$119.00	-	-	-	-	48 x 24	45.00 x 21.00 [1143 x 533]
NP4830	\$157.00	NP4830G	\$157.00	-	-	-	-	48 x 30	45.00 x 27.00 [1143 x 686]
NP4836	\$186.00	NP4836G	\$186.00	NP4836PP	\$186.00	NP4836SS	\$495.00	48 x 36	45.00 x 33.00 [1143 x 838]
NP6030	\$193.00	NP6030G	\$193.00	-	-	-	\$189.00	60 x 30	57.00 x 27.00 [1448 x 686]
NP6036	\$229.00	NP6036G	\$229.00	NP6036PP	\$229.00	NP6036SS	\$653.00	60 x 36	57.00 x 33.00 [1448 x 838]
NP7230	\$222.00	NP7230G	\$222.00	-	-	-	-	72 x 30	69.00 x 27.00 [1753 x 686]
NP7236	\$272.00	NP7236G	\$272.00	-	-	-	-	72 x 36	69.00 x 33.00 [1753 x 838]

Notes: Dimensions in inches [millimeters].

Letters in table correspond to letters on dimensional drawing.

Disconnect enclosures will be up to 2 inches [51mm] wider than width dimensions in this table.

Enclosure Accessories - Mounting Feet, Panel Mounting and Latches

Mounting Feet for Freedom, Commander and Centurion Series Enclosures



AttaBox
A ROBROY ENCLOSURES™ BRAND

Mounting Feet for Freedom, Commander and Centurion Series Enclosures			
Mounting Foot Kit	Price	Description	Wt. [oz]
FRMGFTKIT	\$12.00	AttaBox mounting feet kit, fiberglass-reinforced polyester, for use on Freedom series enclosures. Includes (4) mounting feet and mounting hardware.	1
COMTGFTKIT	\$24.50	AttaBox mounting feet kit, fiberglass-reinforced polyester, for use on Commander series fiberglass, in-line, pushbutton enclosures. Does not fit C0763, C0963, COxPBW series, and COPCxxx series, COPCxB series, and COPCxB22 series enclosures. Includes (2) mounting feet, mounting hardware and silicone adhesive/sealant.	1
CEMTGFTKIT	\$25.00	AttaBox mounting feet kit, fiberglass-reinforced polyester, for use on Centurion series enclosures. Includes (4) mounting feet and mounting hardware.	1



FRMGFTKIT



COMTGFTKIT



CEMTGFTKIT

Enclosure Shipping Schedule			
Same day	1 - 5 days	1 - 15 days	1 - 20 days

Color indicates shipping lead time in business days.

Swing-panel Mounting Kit for MachoBox Series Enclosures

Swing-panel Mounting Kit for MachoBox Series Enclosures			
Mounting Foot Kit	Price	Description	Wt. [oz]
M3024SPMK	\$36.50	AttaBox swing-panel mounting kit, fiberglass-reinforced polyester, for use on 30x24in [762x610mm] MachoBox enclosures and subpanels. Includes (8) mounts and (16) screws.	7



M3024SPMK

Latches For Centurion, Freedom, and Triton Series Enclosures



SSLKIT



FRHLLKIT



TLL150KIT



TLL150WKIT

Latches for Centurion, Freedom, and Triton Series Enclosures		
Latch	Price	Description
SSLKIT	\$20.50	Centurion series luggage style Stainless Steel lockable latch.
FRHLLKIT	\$22.50	Freedom series lockable link latch.
TLL150KIT	\$34.50	Triton Series twist-lock latch. For Type 12, 3R and 4X.
TLL150WKIT	\$34.50	Triton Series twist-lock latch. For 4X top and bottom latches.