

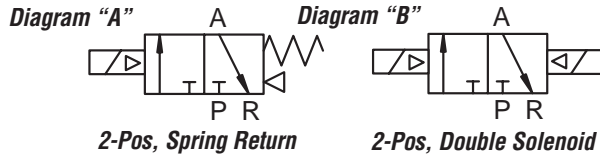


Pneumatic Directional Control Solenoid Valves – AVS-3 Series



AVS-3221

AVS-3211



Features

- Body ported, 3-port (3-way) spool valves
- 1/8", 1/4" or 3/8" NPT ports
- 2-position, single solenoid normally closed spring return; 2-position, double solenoid energize open/energize closed
- 24VDC or 120VAC solenoid coils
- DIN style wiring connector with LED indication
- Locking manual operator
- 2 year warranty



See www.AutomationDirect.com for a wide variety of fitting options



AVS-3 Series Specifications										
Model	AVS-3111-24D	AVS-3111-120A	AVS-3211-24D	AVS-3211-120A	AVS-3221-24D	AVS-3221-120A	AVS-3212-24D	AVS-3212-120A	AVS-3222-24D	AVS-3222-120A
Price	\$21.50	\$21.50	\$25.50	\$25.50	\$40.00	\$40.00	\$25.50	\$25.50	\$40.00	\$40.00
Weight (lb)	0.3	0.3	0.5	0.5	0.8	0.7	0.5	0.5	0.7	0.7
Valve Type	3 port 2 position									
Acting	Internally Piloted									
Diagram	A		A		B		A		B	
Port Size	In/Out=1/8"		In/Out=1/8"				In/Out=1/4"			
Orifice Size	12mm ² (Cv=0.67)		14mm ² (Cv=0.78)				16mm ² (Cv=0.89)			
Fluid	Air (to be filtered by 40µ filter element)									
Pressure	Working: 20-115 psi, (0.15-0.8 MPa), (1.5-8.0 bar); Proof: 215 psi, (1.48 MPa), (14.8 bar)									
Voltage	24VDC single solenoid	120VAC single solenoid	24VDC single solenoid	120VAC single solenoid	24VDC double solenoid	120VAC double solenoid	24VDC single solenoid	120VAC single solenoid	24VDC double solenoid	120VAC double solenoid
Power Consumption	DC: 2.5W AC: 3.5 VA; continuous duty (100% ED)			DC: 3.0W AC: 4.5 VA; continuous duty (100% ED)						
Max Frequency	5 cycles/sec									
Operating Life	50,000,000 cycles									
Insulation	B class									
Min Response	0.05 sec									
Temperature	-5-60°C (23-140°F)									
Lubrication	Not Required									
Protection	IP65 (DIN40050)									
Connection	9.4 mm DIN Terminal			11mm DIN Terminal						
Body	Aluminum Alloy									
Agency Approvals	Solenoid CE marked; RoHS									



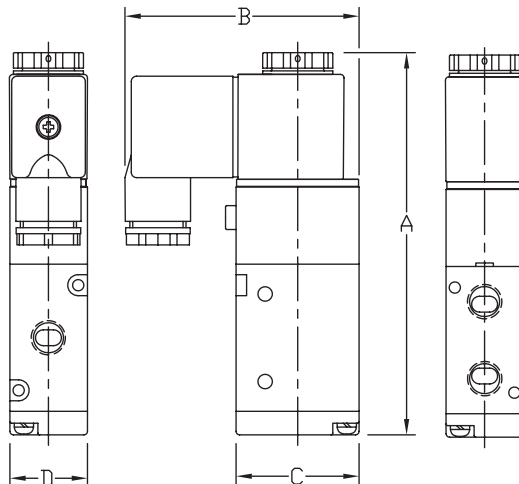
Pneumatic Directional Control Solenoid Valves – AVS-3 Series

AVS-3 Series Specifications								
Model	AVS-3312-24D	AVS-3312-120A	AVS-3322-24D	AVS-3322-120A	AVS-3313-24D	AVS-3313-120A	AVS-3323-24D	AVS-3323-120A
Price	\$36.00	\$36.00	\$48.00	\$46.00	\$36.00	\$36.00	\$49.00	\$49.00
Weight (lb)	0.7	0.7	0.9	0.9	0.7	0.7	0.9	0.9
Valve Type	3 port 2 position							
Acting	Internally Piloted							
Diagram	A		B		A		B	
Port Size	In/Out=1/4"				In/Out=3/8"			
Orifice Size	25mm ² (Cv=1.39)				16mm ² (Cv=1.67)			
Fluid	Air (to be filtered by 40µ filter element)							
Pressure	Working: 20-115 psi, (0.15-0.8 MPa), (1.5-8.0 bar); Proof: 215 psi, (1.48 MPa), (14.8 bar)							
Voltage	24VDC single solenoid	120VAC single solenoid	24VDC double solenoid	120VAC double solenoid	24VDC single solenoid	120VAC single solenoid	24VDC double solenoid	120VAC double solenoid
Power Consumption	DC: 3.0W AC: 4.5 VA; continuous duty (100% ED)							
Max Freq	5 cycles/sec							
Insulation	B class							
Min Response	0.05 sec							
Temperature	-5-60°C (23-140°F)							
Lubrication	Not Required							
Protection	IP65 (DIN40050)							
Connection	11mm DIN Terminal							
Body	Aluminum Alloy							
Agency Approvals	Solenoid CE marked; RoHS							

Dimensions

mm [inches]

AVS-311x,
AVS-321x,
AVS-331x



PART NO.	A	B	C	D
AVS-311X-XXX	88.4 [3.48]	54.6 [2.15]	27.0 [1.06]	18.0 [0.71]
AVS-321X-XXX	109.0 [4.29]	66.7 [2.63]	35.0 [1.38]	22.0 [0.87]
AVS-331X-XXX	119.8 [4.72]	69.1 [2.72]	40.0 [1.57]	27.0 [1.06]

See our website www.AutomationDirect.com for complete Engineering drawings.

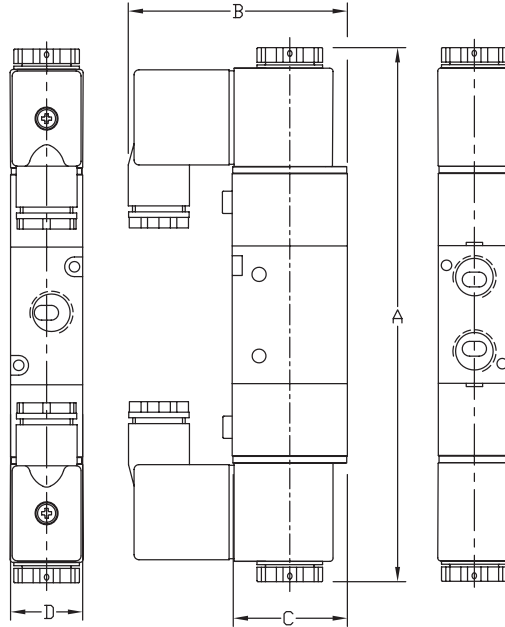


Pneumatic Directional Control Solenoid Valves – AVS-3 Series

Dimensions

mm [inches]

AVS-322x,
AVS-332x



DIMENSION TABLE				
PART NO.	A	B	C	D
AVS-322X-XXX	162.8 [6.41]	66.8 [2.63]	34.8 [1.37]	22.0 [0.87]
AVS-332X-XXX	174.8 [6.88]	69.2 [2.72]	40.0 [1.57]	27.0 [1.06]

See our website www.AutomationDirect.com for complete Engineering drawings.



Exhaust Silencers

NITRA™ exhaust silencers are available in three styles and nine popular NPT and BSPT sizes. Add these to the exhaust ports of NITRA directional control solenoid valves to reduce noise.

Features

- Inch and metric sizes available
- Bronze cone and flat styles
- Plastic cylindrical
- Maximum pressure = 150 psi (10 bar)



SBC Series

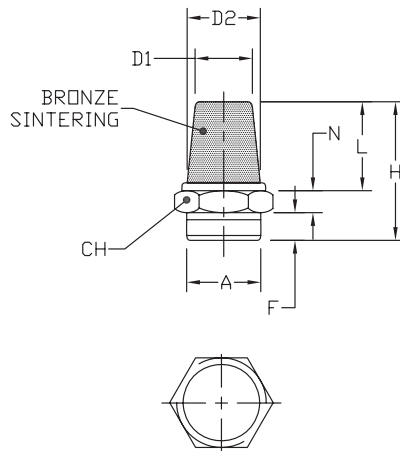


SBF Series



SPL Series

SBC Silencers

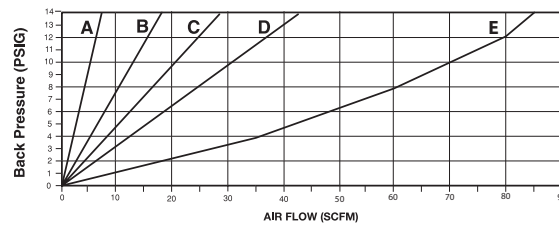


NITRA™ Bronze Cone Silencers											
Inch Sizes - dimensions in inches [mm]											
Part No.	Price	A	CH	D1	D2	F	H	L	N	Package Weight (lb)	Qty. per pack
SBC-18N	\$2.50	MNPT 1/8	0.47 [12.0]	0.32 [8.0]	0.28 [7.0]	0.24 [6.0]	0.94 [24.0]	0.55 [14.0]	0.16 [4.0]	0.01	2
SBC-14N	\$2.75	MNPT 1/4	0.63 [16.0]	0.47 [12.0]	0.40 [10.0]	0.32 [8.0]	1.18 [30.0]	0.71 [18.0]	0.16 [4.0]	0.01	
SBC-38N	\$4.00	MNPT 3/8	0.71 [18.0]	0.55 [14.0]	0.39 [11.0]	0.35 [9.0]	1.38 [35.0]	0.83 [21.0]	0.197 [5.0]	0.05	2
SBC-12N	\$7.50	MNPT 1/2	0.94 [24.0]	0.75 [19.0]	0.59 [15.0]	0.40 [10.0]	1.73 [44.0]	1.10 [28.0]	0.24 [6.0]	0.15	
Metric Sizes - dimensions in inches [mm]											
SBC-M5	\$1.75	M5	0.31 [8.0]	0.20 [5.0]	0.16 [4.0]	0.20 [5.0]	0.79 [20.0]	0.47 [12.0]	0.12 [3.0]	0.01	2
SBC-18R	\$2.50	R 1/8	0.47 [12.0]	0.32 [8.0]	0.28 [7.0]	0.24 [6.0]	0.94 [24.0]	0.55 [14.0]	0.16 [4.0]	0.01	
SBC-14R	\$2.75	R 1/4	0.63 [16.0]	0.47 [12.0]	0.40 [10.0]	0.32 [8.0]	1.18 [30.0]	0.71 [18.0]	0.16 [4.0]	0.01	2
SBC-38R	\$4.00	R 3/8	0.71 [18.0]	0.55 [14.0]	0.39 [11.0]	0.35 [9.0]	1.38 [35.0]	0.83 [21.0]	0.197 [5.0]	0.05	
SBC-12R	\$7.50	R 1/2	0.94 [24.0]	0.75 [19.0]	0.59 [15.0]	0.40 [10.0]	1.73 [44.0]	1.10 [28.0]	0.24 [6.0]	0.15	

Flow Characteristics

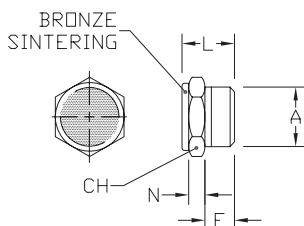
Bronze Cone Silencers

- A: SBC-M5
- B: SBC-18N; SBC-18R
- C: SBC-14N; SBC-14R
- D: SBC-38N; SBC-38R
- E: SBC-12N; SBC-12R



Noise Elimination = > 20db
Filtered Element = 40 micron

SBF Silencers



NITRA™ Bronze Flat Silencers									
Inch Sizes - dimensions in inches [mm]									
Part No.	Price	A	CH	F	L	N	Package Weight (lb)	Qty. per pack	
SBF-18N	\$2.50	MNPT 1/8	0.47 [12.0]	0.24 [6.0]	0.47 [12.0]	0.16 [4.0]	0.01	2	
SBF-14N	\$2.75	MNPT 1/4	0.67 [17.0]	0.32 [8.0]	0.59 [15.0]	0.16 [4.0]	0.01		
SBF-38N	\$3.75	MNPT 3/8	0.75 [19.0]	0.35 [9.0]	0.67 [17.0]	0.20 [5.0]	0.05	2	
SBF-12N	\$7.75	MNPT 1/2	0.94 [24.0]	0.40 [10.0]	0.71 [18.0]	0.24 [6.0]	0.15		
Metric Sizes - dimensions in inches [mm]									
SBF-M5	\$1.50	M5	0.31 [8.0]	0.20 [5.0]	0.35 [9.0]	0.12 [3.0]	0.01	2	
SBF-18R	\$2.50	R 1/8	0.47 [12.0]	0.24 [6.0]	0.47 [12.0]	0.16 [4.0]	0.01		
SBF-14R	\$2.75	R 1/4	0.67 [17.0]	0.32 [8.0]	0.59 [15.0]	0.16 [4.0]	0.01	2	
SBF-38R	\$3.75	R 3/8	0.75 [19.0]	0.35 [9.0]	0.67 [17.0]	0.20 [5.0]	0.05		
SBF-12R	\$7.75	R 1/2	0.94 [24.0]	0.40 [10.0]	0.71 [18.0]	0.24 [6.0]	0.15		

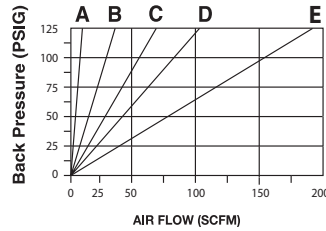


Exhaust Silencers

Flow Characteristics

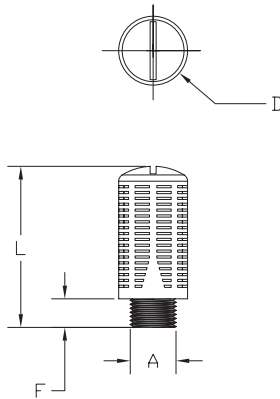
Bronze Flat Silencers

- A: SBF-M5
- B: SBF-18N; SBF-18R
- C: SBF-14N; SBF-14R
- D: SBF-28N; SBF-38R
- E: SBF-12N; SBF-12R



Noise Elimination = > 30db
Filtered Element = 40 micron

SPL Silencers



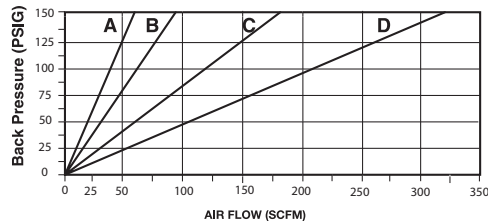
Note: SPL series plastic exhaust silencers have a maximum pressure of 80 PSI (5.5 bar).

NITRA™ Plastic Exhaust Silencers							
Inch Sizes - dimensions in inches [mm]							
Part No.	Price	A	D	L	F	Package Weight (lbs)	Qty. per pack
SPL-18N	\$2.00	MNPT 1/8	0.55 [13.8]	1.28 [32.4]	0.33 [8.3]	0.02	2
SPL-14N	\$2.25	MNPT 1/4	0.68 [17.3]	1.68 [42.5]	0.39 [9.9]	0.03	
SPL-38N	\$2.50	MNPT 3/8	0.87 [22.0]	2.10 [53.4]	0.40 [10.0]	0.06	
SPL-12N	\$2.50	MNPT 1/2	1.00 [25.4]	2.66 [67.6]	0.44 [11.1]	0.08	
Metric Sizes - dimensions in inches [mm]							
SPL-18R	\$2.00	R 1/8	0.60 [15.2]	1.33 [33.7]	0.24 [6.1]	0.02	2
SPL-14R	\$2.25	R 1/4	0.60 [18.8]	1.60 [40.6]	0.31 [7.7]	0.03	
SPL-38R	\$2.50	R 3/8	0.94 [24.0]	2.20 [55.9]	0.39 [9.9]	0.06	
SPL-12R	\$2.50	R 1/2	0.94 [24.0]	2.20 [55.9]	0.39 [9.9]	0.08	

Flow Characteristics

Plastic Silencers

- A: SPL-18N; SPL-18R
- B: SPL-14N; SPL-14R
- C: SPL-38N; SPL-38R
- D: SPL-12N; SPL-12R



Noise Elimination = > 30db
Filtered Element = 40 micron



Pneumatic A-Series Direction Control Solenoid Valves - Accessories



AVC1-12D



AVC2-12D

Pneumatic A-Series Directional Control Solenoid Valve Series Accessories			
Part No.	Price	Description	Weight (lb)
AVC1-12D	\$8.50	NITRA solenoid coil, 12VDC, 2.5 W. For use with AVS-31 and AVS-51 series valves.	0.1
AVC1-24D	\$8.50	NITRA solenoid coil, 24VDC, 2.5 W. For use with AVS-31 and AVS-51 series valves.	0.1
AVC1-24A	\$8.50	NITRA solenoid coil, 24VAC, 4.0 VA. For use with AVS-31 and AVS-51 series valves.	0.1
AVC1-120A	\$8.50	NITRA solenoid coil, 120VAC, 3.5 VA. For use with AVS-31 and AVS-51 series valves.	0.1
AVC2-12D	\$8.50	NITRA solenoid coil, 12VDC, 3.0 W. For use with AVP-31, AVS-32, AVS-33, AVS-52, AVS-53 and AVS-54 series valves.	0.2
AVC2-24D	\$8.50	NITRA solenoid coil, 24VDC, 3.0 W. For use with AVP-31, AVS-32, AVS-33, AVS-52, AVS-53 and AVS-54 series valves.	0.2
AVC2-24A	\$8.50	NITRA solenoid coil, 24VAC, 5.0 VA. For use with AVP-31, AVS-32, AVS-33, AVS-52, AVS-53 and AVS-54 series valves.	0.2
AVC2-120A	\$8.50	NITRA solenoid coil, 120VAC, 4.5 VA. For use with AVP-31, AVS-32, AVS-33, AVS-52, AVS-53 and AVS-54 series valves.	0.2
AVP-31BKT	\$1.25	NITRA individual mounting bracket, plated steel. For use with AVP-31 directional control valves.	0.1
AVP-31KIT	\$2.00	NITRA stacking screws, for use with AVP-31 directional control valves. One kit is required for each additional AVP-31 valve added to the stack.	0.1



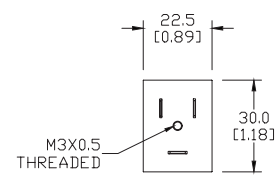
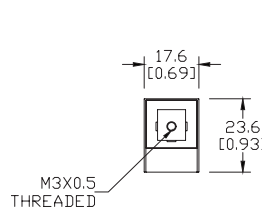
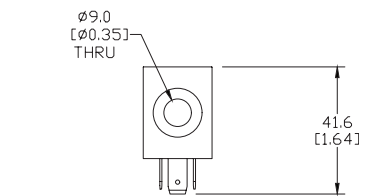
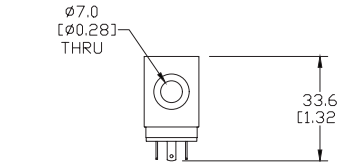
AVP-31BKT



AVP-31KIT

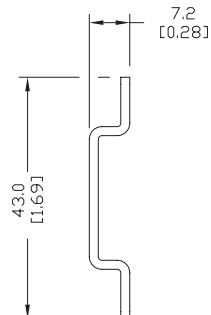
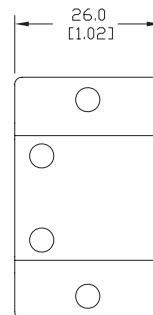
Dimensions

mm [inches]



AVC1 Series Coils

AVC2 Series Coils



AVP-31BKT

See our website www.AutomationDirect.com for complete Engineering drawings.



Pneumatic Directional Control Solenoid Valve Manifolds and Accessories



**AM-3 Series
Manifolds**



AM-31BP

Pneumatic Directional Control Solenoid Valve Series Accessories			
Part No.	Price	Description	Weight (lb)
AM-312	\$15.50	NITRA pneumatic valve manifold, aluminum, 2 stations, (2) 1/4in FNPT inlet port(s), (2) 1/4in FNPT exhaust port(s). For use with AVS-31 series.	0.2
AM-314	\$22.50	NITRA pneumatic valve manifold, aluminum, 4 stations, (2) 1/4in FNPT inlet port(s), (2) 1/4in FNPT exhaust port(s). For use with AVS-31 series.	0.3
AM-316	\$28.00	NITRA pneumatic valve manifold, aluminum, 6 stations, (2) 1/4in FNPT inlet port(s), (2) 1/4in FNPT exhaust port(s). For use with AVS-31 series.	0.4
AM-318	\$36.50	NITRA pneumatic valve manifold, aluminum, 8 stations, (2) 1/4in FNPT inlet port(s), (2) 1/4in FNPT exhaust port(s). For use with AVS-31 series.	0.5
AM-31BP	\$3.50	NITRA blanking plate, plated steel. For use with AM-31 series manifolds.	0.1
AM-322	\$15.50	NITRA pneumatic valve manifold, aluminum, 2 stations, (2) 1/4in FNPT inlet port(s), (2) 1/4in FNPT exhaust port(s). For use with AVS-32 series.	0.2
AM-324	\$25.00	NITRA pneumatic valve manifold, aluminum, 4 stations, (2) 1/4in FNPT inlet port(s), (2) 1/4in FNPT exhaust port(s). For use with AVS-32 series.	0.4
AM-326	\$36.50	NITRA pneumatic valve manifold, aluminum, 6 stations, (2) 1/4in FNPT inlet port(s), (2) 1/4in FNPT exhaust port(s). For use with AVS-32 series.	0.5
AM-328	\$47.50	NITRA pneumatic valve manifold, aluminum, 8 stations, (2) 1/4in FNPT inlet port(s), (2) 1/4in FNPT exhaust port(s). For use with AVS-32 series.	0.7
AM-32BP	\$3.50	NITRA blanking plate, plated steel. For use with AM-32 series manifolds.	0.1
AM-332	\$16.50	NITRA pneumatic valve manifold, aluminum, 2 stations, (2) 3/8in FNPT inlet port(s), (2) 3/8in FNPT exhaust port(s). For use with AVS-33 series.	0.4
AM-334	\$30.00	NITRA pneumatic valve manifold, aluminum, 4 stations, (2) 3/8in FNPT inlet port(s), (2) 3/8in FNPT exhaust port(s). For use with AVS-33 series.	0.6
AM-336	\$52.00	NITRA pneumatic valve manifold, aluminum, 6 stations, (2) 3/8in FNPT inlet port(s), (2) 3/8in FNPT exhaust port(s). For use with AVS-33 series.	0.9
AM-338	\$56.00	NITRA pneumatic valve manifold, aluminum, 8 stations, (2) 3/8in FNPT inlet port(s), (2) 3/8in FNPT exhaust port(s). For use with AVS-33 series.	1.1
AM-33BP	\$3.50	NITRA blanking plate, plated steel. For use with AM-33 series manifolds.	0.1
AM-512	\$8.75	NITRA pneumatic valve manifold, aluminum, 2 stations, (2) 1/4in FNPT inlet port(s), (4) 1/4in FNPT exhaust port(s). For use with AVS-51 series.	0.4
AM-514	\$15.50	NITRA pneumatic valve manifold, aluminum, 4 stations, (2) 1/4in FNPT inlet port(s), (4) 1/4in FNPT exhaust port(s). For use with AVS-51 series.	0.6
AM-516	\$22.00	NITRA pneumatic valve manifold, aluminum, 6 stations, (2) 1/4in FNPT inlet port(s), (4) 1/4in FNPT exhaust port(s). For use with AVS-51 series.	0.8
AM-518	\$31.00	NITRA pneumatic valve manifold, aluminum, 8 stations, (2) 1/4in FNPT inlet port(s), (4) 1/4in FNPT exhaust port(s). For use with AVS-51 series.	1.1
AM-51BP	\$4.50	NITRA blanking plate, plated steel. For use with AM-51 series manifolds.	0.1
AM-522	\$12.00	NITRA pneumatic valve manifold, aluminum, 2 stations, (2) 1/4in FNPT inlet port(s), (4) 1/4in FNPT exhaust port(s). For use with AVS-52 series.	0.5
AM-524	\$24.00	NITRA pneumatic valve manifold, aluminum, 4 stations, (2) 1/4in FNPT inlet port(s), (4) 1/4in FNPT exhaust port(s). For use with AVS-52 series.	0.9
AM-526	\$37.00	NITRA pneumatic valve manifold, aluminum, 6 stations, (2) 1/4in FNPT inlet port(s), (4) 1/4in FNPT exhaust port(s). For use with AVS-52 series.	1.2
AM-528	\$49.00	NITRA pneumatic valve manifold, aluminum, 8 stations, (2) 1/4in FNPT inlet port(s), (4) 1/4in FNPT exhaust port(s). For use with AVS-52 series.	1.5
AM-52BP	\$5.00	NITRA blanking plate, plated steel. For use with AM-52 series manifolds.	0.1



Pneumatic Directional Control Solenoid Valve Manifolds and Accessories



**AM-5 Series
Manifolds**



AM-31GS

Pneumatic Directional Control Solenoid Valve Series Accessories Continued			
Part No.	Price	Description	Weight (lb)
AM-532	\$19.00	NITRA pneumatic valve manifold, aluminum, 2 stations, (2) 3/8in FNPT inlet port(s), (4) 3/8in FNPT exhaust port(s). For use with AVS-53 series.	0.8
AM-534	\$36.50	NITRA pneumatic valve manifold, aluminum, 4 stations, (2) 3/8in FNPT inlet port(s), (4) 3/8in FNPT exhaust port(s). For use with AVS-53 series.	1.4
AM-536	\$56.00	NITRA pneumatic valve manifold, aluminum, 6 stations, (2) 3/8in FNPT inlet port(s), (4) 3/8in FNPT exhaust port(s). For use with AVS-53 series.	1.9
AM-538	\$73.00	NITRA pneumatic valve manifold, aluminum, 8 stations, (2) 3/8in FNPT inlet port(s), (4) 3/8in FNPT exhaust port(s). For use with AVS-53 series.	2.5
AM-53BP	\$5.00	NITRA blanking plate, plated steel. For use with AM-53 series manifolds.	0.1
AM-542	\$20.00	NITRA pneumatic valve manifold, aluminum, 2 stations, (2) 1/2in FNPT inlet port(s), (4) 1/2in FNPT exhaust port(s). For use with AVS-54 series.	1.7
AM-544	\$41.00	NITRA pneumatic valve manifold, aluminum, 4 stations, (2) 1/2in FNPT inlet port(s), (4) 1/2in FNPT exhaust port(s). For use with AVS-54 series.	2.8
AM-546	\$66.00	NITRA pneumatic valve manifold, aluminum, 6 stations, (2) 1/2in FNPT inlet port(s), (4) 1/2in FNPT exhaust port(s). For use with AVS-54 series.	4.0
AM-548	\$75.00	NITRA pneumatic valve manifold, aluminum, 8 stations, (2) 1/2in FNPT inlet port(s), (4) 1/2in FNPT exhaust port(s). For use with AVS-54 series.	5.2
AM-54BP	\$4.50	NITRA blanking plate, plated steel. For use with AM-54 series manifolds.	0.1
AM-31GS	\$3.50	NITRA manifold mounting set, for use with AM-31 series manifolds.	0.1
AM-32GS	\$4.00	NITRA manifold mounting set, for use with AM-32 series manifolds.	0.1
AM-33GS	\$4.00	NITRA manifold mounting set, for use with AM-33 series manifolds.	0.1
AM-51GS	\$3.50	NITRA manifold mounting set, for use with AM-51 series manifolds.	0.1
AM-52GS	\$4.00	NITRA manifold mounting set, for use with AM-52 series manifolds.	0.1
AM-53GS	\$4.25	NITRA manifold mounting set, for use with AM-53 series manifolds.	0.1
AM-54GS	\$4.50	NITRA manifold mounting set, for use with AM-54 series manifolds.	0.1

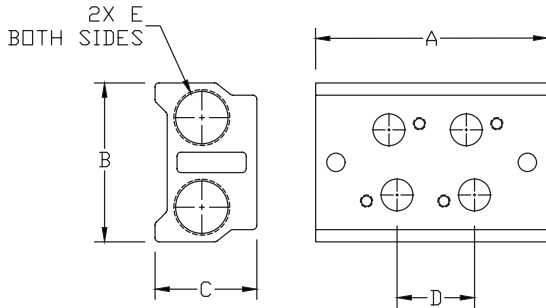


Pneumatic Directional Control Solenoid Valve Manifolds and Accessories

Dimensions

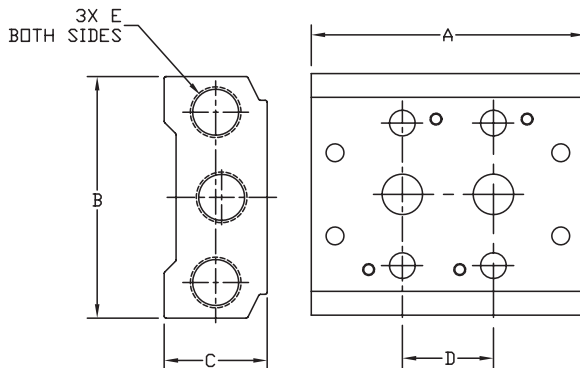
mm [inches]

AM 3x Series Manifolds



MANIFOLD DIMENSIONS					
PART NO.	A	B	C	D	E
AM-312	57.0 [2.24]	39.0 [1.54]	25.0 [0.98]	19.0 [0.75]	1/4 NPT
AM-314	95.0 [3.74]			3X 19.0 [0.75]	
AM-316	133.0 [5.24]			5X 19.0 [0.75]	
AM-318	171.0 [6.73]			7X 19.0 [0.75]	
AM-322	69.0 [2.72]	45.0 [1.77]	25.0 [0.98]	23.0 [0.91]	
AM-324	115.0 [4.53]			3X 23.0 [0.91]	
AM-326	161.0 [6.34]			5X 23.0 [0.91]	
AM-328	207.0 [8.15]			7X 23.0 [0.91]	
AM-332	82.0 [3.23]	52.0 [2.05]	29.0 [1.14]	28.0 [1.10]	3/8 NPT
AM-334	138.0 [5.46]			3X 28.0 [1.10]	
AM-336	194.0 [7.64]			5X 28.0 [1.10]	
AM-338	250.0 [9.84]			7X 28.0 [1.10]	

AM 5x Series Manifolds



MANIFOLD DIMENSIONS					
PART NO.	A	B	C	D	E
AM-512	57.0 [2.24]	58.0 [2.28]	25.0 [0.98]	19.0 [0.75]*	1/4 NPT
AM-514	95.0 [3.74]			3X 19.0 [0.75]*	
AM-516	133.0 [5.24]			5X 19.0 [0.75]*	
AM-518	171.0 [6.73]			7X 19.0 [0.75]*	
AM-522	69.0 [2.72]	61.0 [2.40]	26.0 [1.02]	23.0 [0.91]	
AM-524	115.0 [4.53]			3X 23.0 [0.91]	
AM-526	161.0 [6.34]			5X 23.0 [0.91]	
AM-528	207.0 [8.15]			7X 23.0 [0.91]	
AM-532	82.0 [3.23]	75.0 [2.95]	30.0 [1.19]	28.0 [1.10]	3/8 NPT
AM-534	138.0 [5.46]			3X 28.0 [1.10]	
AM-536	194.0 [7.64]			5X 28.0 [1.10]	
AM-538	250.0 [9.84]			7X 28.0 [1.10]	
AM-542	98.0 [3.86]	104.0 [4.09]	38.0 [1.50]	35.0 [1.38]	1/2 NPT
AM-544	168.0 [6.61]			3X 35.0 [1.38]	
AM-546	238.0 [9.37]			5X 35.0 [1.38]	
AM-548	308.0 [12.13]			7X 35.0 [1.38]	

* Exhaust holes have 1mm offset from spacing centerline.

See our website www.AutomationDirect.com for complete Engineering drawings.

Solenoid Valve Cables and Connectors



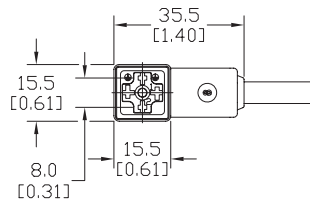
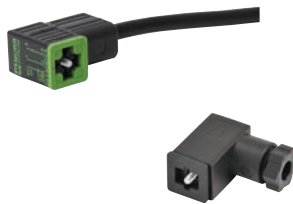
These high quality connectors and over-molded cables help reduce wiring time. The lower voltage models, 24V or 110V AC/DC, include built-in surge suppression, Yellow LED indicator and are rated for connecting with electronics. The 230V AC/DC models are rated for straight wired products. All models are available in five sizes based on DIN 43650.

Features

- 8mm, 9.4mm, 10mm, 11mm and 18mm square DIN styles
- Fits most popular solenoid valves and sensors
- Suppression and LED indication available in 24V or 110V AC/DC models
- PVC jacketed cables in 1, 3 or 5 meter lengths on select connectors
- Field wireable connectors on select models
- Polarity insensitive (follow solenoid, sensor, or other devices wiring diagram)

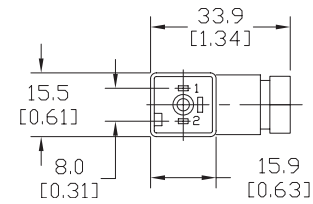
8mm Connectors

Dimensions shown
mm [inches]



Height = 25mm [0.98in]

Connector with Cable



Height = 26mm [1.02]

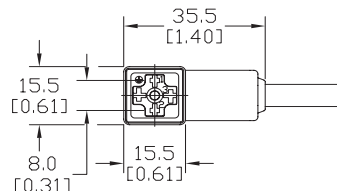
Field Wireable Connector

8mm (3-pole) Connectors (per DIN 43650 Form C)												
Part No.	Price	Voltage (AC/DC)	Current Rating	IP Rating	Wire Size	Cable Dia. (in.)	LED	Surge Protection	Wiring Figure	Screw Size/Torque	Weight (lbs)	Agency Approval
SC8-LS24-3	\$12.00	24 ±20%	max 4A	67	18 AWG	0.23	yes	zener diode (D-Z DO-15 47V 2W)	1	m2.5-0.45x25mm/ 0.4 Nm (3.5 in lb)	0.40	CSA (080128-0-000)
SC8-LS24-5	\$14.50										0.65	
SC8-LS110-3	\$15.00	110 ±10%	max 4A	67	18 AWG	0.23	yes	zener diode (D-Z DO-41 ZY200 2W)	7	m2.5-0.45x25mm/ 0.5 Nm (4.4 in lb)	0.41	
SC8-LS110-5	\$17.50										0.63	
SC8-3	\$10.00	230	max 6A	65	Solid 12 AWG Stranded 14 AWG w/Ferrule 16 AWG	field wireable gland size 0.20 to 0.24	no	none	2	m2.5-0.45x25mm/ 0.5 Nm (4.4 in lb)	0.39	none
SC8-0	\$5.50										0.10	
SC8-1	\$11.00										0.10	
SC8-5	\$13.50			67	18 AWG	0.23			2		0.68	

Last digit in part number denotes cable length in meters, a 0 indicates field termination.

8mm Transmitter Connector

Dimensions shown
mm [inches]



Height = 25mm [0.98in]

Connector with Cable

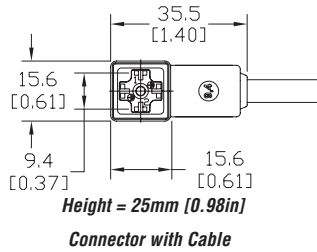
8mm (4-pole) Connectors (per DIN 43650 Form C)												
Part No.	Price	Voltage (AC/DC)	Current Rating	IP Rating	Wire Size	Cable Dia. (in.)	LED	Surge Protection	Wiring Figure	Screw Size/Torque	Weight (lbs)	Agency Approval
SC8-5T	\$18.50	230	max 6A	67	18 AWG	0.26	yes	none	8	m3-0.5x42mm/ 0.5 Nm (4.4 in lb)	0.80	CSA (080128-0-000)

Last numeric digit in part number denotes cable length in meters, a 0 indicates field termination.

Solenoid Valve Cables and Connectors

9.4mm Connectors

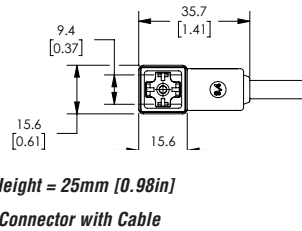
Dimensions shown
mm [inches]



9.4mm (3-pole) Connectors (DIN Style, Form C Industrial)												
Part No.	Price	Voltage (AC/DC)	Current Rating	IP Rating	Wire Size	Cable Dia. (in.)	LED	Surge Protection	Wiring Figure	Screw Size/Torque	Weight (lbs)	Agency Approval
SC9-LS24-3	\$12.00	24 ±20%	max 4A	67	18 AWG	0.23	yes	zener diode (D-Z D0-15 47V 2W)	1	m3-0.5x26mm/ 0.4 Nm (3.5 in lb)	0.40	CSA (080128-0-000)
SC9-LS24-5	\$14.50										0.64	
SC9-LS110-3	\$15.00	110 ±10%	max 6A	67	18 AWG	no	none	2	m3-0.5x26mm/ 0.5 Nm (4.4 in lb)	0.40	none	
SC9-LS110-5	\$17.50									0.64		
SC9-3	\$10.00	230	max 6A	67	18 AWG	no	none	2	m3-0.5x26mm/ 0.5 Nm (4.4 in lb)	0.40	none	
SC9-5	\$13.50									0.64		

9.4mm Connectors

Dimensions shown
mm [inches]

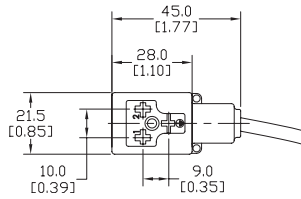


9.4mm (4-pole) Connectors (DIN Style, Form C Industrial)													
Part No.	Price	Voltage (AC/DC)	Current Rating	IP Rating	Wire Size	Cable Dia.	Cable Length	LED	Surge Protection	Wiring Figure	Screw Size/Torque	Weight (lbs)	Agency Approval
7000-94141-6270300	\$14.00	230 VAC/ VDC	max 6A	IP67	18 AWG	5.6-6.2 mm	9.8ft/3m	no	none	8	m3-0.5x26mm/ 0.4 Nm (3.5 in lb)	0.50	CSA (080128-0-000)/ RoHS
7000-94141-6270500	\$19.00						16.4ft/5m					0.79	

Solenoid Valve Cables and Connectors

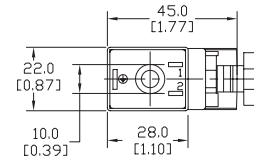
10mm Connectors

Dimensions shown
mm [inches]



Height = 30mm [1.18in]

Connector with Cable



Height = 41mm [1.61in]

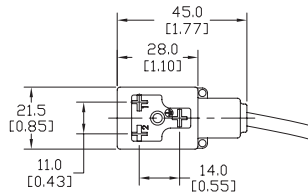
Field Wireable Connector

10mm (3-pole) Connectors (per DIN 43650 Form B)														
Part No.	Price	Voltage (AC/DC)	Current Rating	IP Rating	Wire Size	Cable Dia. (in.)	LED	Surge Protection	Wiring Figure	Screw Size/Torque	Weight (lbs)	Agency Approval		
SC10-LS24-3	\$12.00	24 ±20%	max 4A	67	18 AWG	0.23	yes	zener diode (D-Z DO-15 47V 2W)	10	m3-0.5x30mm/ 0.4 Nm (3.5 in lb)	0.43	CSA (080128-0-000)		
SC10-LS24-5	\$14.50												6	0.43
SC10-LS110-3	\$15.00	110 ±10%	max 1A					zener diode (D-Z DO-41 ZY200 2W)	6					
SC10-LS110-5	\$17.50												3	0.43
SC10-3	\$10.00	230	max 10A					no	none					
SC10-5	\$13.50													
SC10-LS24-0	\$10.00	24 ±20%	max 4A	65	Solid 12 AWG Stranded 14 AWG w/Ferrule 16 AWG	field wireable gland size 0.24 to 0.32	yes	zener diode (D-Z DO-15 47V 2W)	4	m3-0.5x42mm/ 0.5 Nm (4.4 in lb)	0.07	none		
SC10-LS110-0	\$11.00	110 ±10%	max 1A					mov (SIOV S10 K130)	5				0.07	
SC10-0	\$8.25	230	max 10A					no	none					9

Last digit in part number denotes cable length in meters, a 0 indicates field termination.

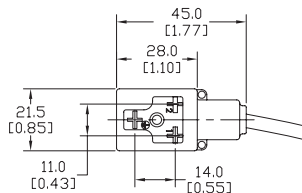
11mm Connectors

Dimensions shown
mm [inches]



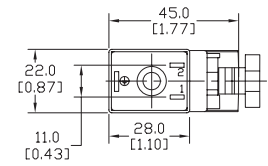
Height = 30mm [1.18in]

Connector with Cable



Height = 30mm [1.18in]

Reverse Connector with Cable



Height = 41mm [1.61in]

Field Wireable Connector

11mm (3-pole) Connectors (DIN Style, Form B Industrial)													
Part No.	Price	Voltage (AC/DC)	Current Rating	IP Rating	Wire Size	Cable Dia. (in)	LED	Surge Protection	Wiring Figure	Screw Size/Torque	Weight (lbs)	Agency Approval	
SC11-LS24-3	\$12.00	24 ±20%	max 4A	67	18 AWG	0.23	yes	zener diode (D-Z DO-15 47V 2W)	10	m3-0.5x30mm/ 0.4 Nm (3.5 in lb)	0.44	CSA (080128-0-000)	
SC11-LS24-5	\$14.50												6
SC11-LS110-3	\$15.00	110 ±10%	max 1A					zener diode (D-Z DO-41 ZY200 2W)	6				
SC11-LS110-5	\$17.50												10
SC11-LS24-3R	\$12.00	24 ±20%	max 4A					zener diode (D-Z DO-15 47V 2W)	10				
SC11-LS24-5R	\$14.50												6
SC11-LS110-3R	\$15.00	110 ±10%	max 1A	zener diode (D-Z DO-41 ZY200 2W)	6	0.44							
SC11-LS110-5R	\$17.50						3	0.67					
SC11-3	\$10.00	230	max 10A	no	none	3			0.44				
SC11-5	\$13.50												
SC11-LS24-0	\$10.00	24 ±20%	max 4A	65	Solid 12 AWG Stranded 14 AWG w/Ferrule 16 AWG	field wireable gland size 0.24 to 0.32	yes	zener diode (D-Z DO-15 47V 2W)	4	m3-0.5x42mm/ 0.5 Nm (4.4 in lb)	0.07	none	
SC11-LS110-0	\$11.00	110 ±10%	max 1A					mov (SIOV S10 K130)	5				0.07
SC11-0	\$8.25	230	max 10A					no	none				

Last numeric digit in part number denotes cable length in meters, a 0 indicates field termination.

Solenoid Valve Cables and Connectors Wiring Diagrams

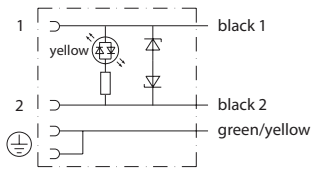


Figure No. 1

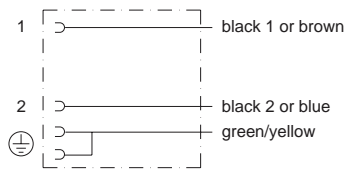


Figure No. 2

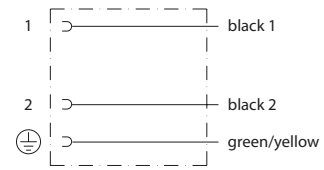


Figure No. 3

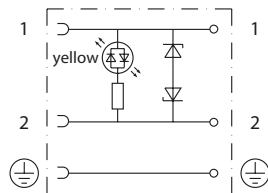


Figure No. 4

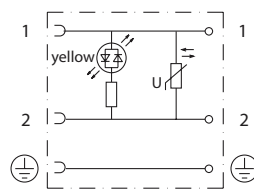


Figure No. 5

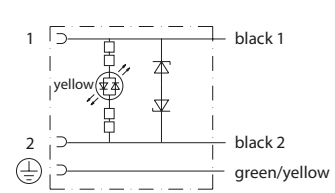


Figure No. 6

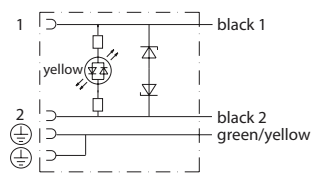


Figure No. 7

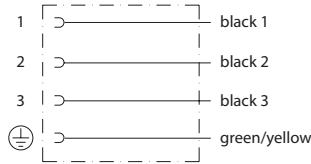


Figure No. 8

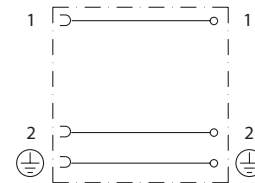


Figure No. 9

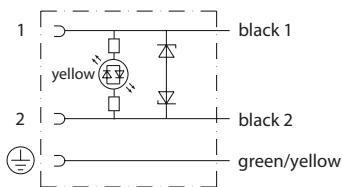


Figure No. 10