



Process Pipeline Solenoid Valves

DVP-2C & DVP-3C Series



Part No. DVP-2CC1C-24A

The NITRA™ DVP-2C and DVP-3C Series valves can be stacked into a multiple output bank of solenoid valves. The DVP-2C and 3C valves feature a fully encapsulated coil, spring compensated plunger seats for long life, and a miniature stackable composite valve body. The advantage to this design is the versatility to stock single units and build, mix, and match to meet specifications. In most cases these valves reduce inventory costs and lower installation costs over a conventional manifold valve series. The coils are available with DIN connectors installed.

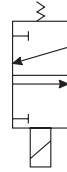
Features

- 2-way and 3-way stackable poppet style valves
- 1/8" FNPT ports
- 2-position, normally closed, spring return
- 24VDC, 24VAC or 120VAC solenoids
- DIN style wiring connector

Valve Symbols



2-way, 2-pos, NC



3-way, 2-pos, NC



See www.AutomationDirect.com for a wide variety of fitting and cable options



DVP-2C & DVP-3C Series Solenoid Valve Specifications						
Model	DVP-2CC1C-24D	DVP-2CC1C-24A	DVP-2CC1C-120A	DVP-3CC1C-24D	DVP-3CC1C-24A	DVP-3CC1C-120A
Price	\$24.00	\$24.00	\$24.00	\$24.00	\$24.00	\$24.00
Weight (lbs)	0.3	0.3	0.3	0.3	0.3	0.3
Valve Type	2-way, 2-position			3-way, 2-position		
Acting	Stackable poppet valve, normally closed, spring return					
Port Size	1/8" FNPT					
Orifice Size	0.6" [1.5 mm]					
CV	0.08			0.08 (exhaust 0.08)		
Media	Air, oil, inert gas, water, caustics*					
Pressure Range	0-200 psi [0-13.8 bar]			1-150 psi [0-10.3 bar]		
Voltage (± 10%)	24VDC	24VAC 50/60 Hz	120VAC 50/60 Hz	24VDC	24VAC 50/60 Hz	120VAC 50/60 Hz
Inrush AC	-	10VA		-	10VA	
Power Consumption	6.5 W	8.5 VA		6.5 W	8.5 VA	
Max Freq	71.4 Hz					
Insulation	Class F (continuous duty)					
Min Response	12-14 ms complete cycle					
Temperature	14°F to 122°F [-10°C to 50°C]					
Lubrication	Not required					
Protection	NEMA Type 4					
Connection	11mm DIN terminal					
Construction	Glass filled nylon body; Viton seals; Operator Brass					
Life Cycle	20 million					
Agency Approvals	CE					

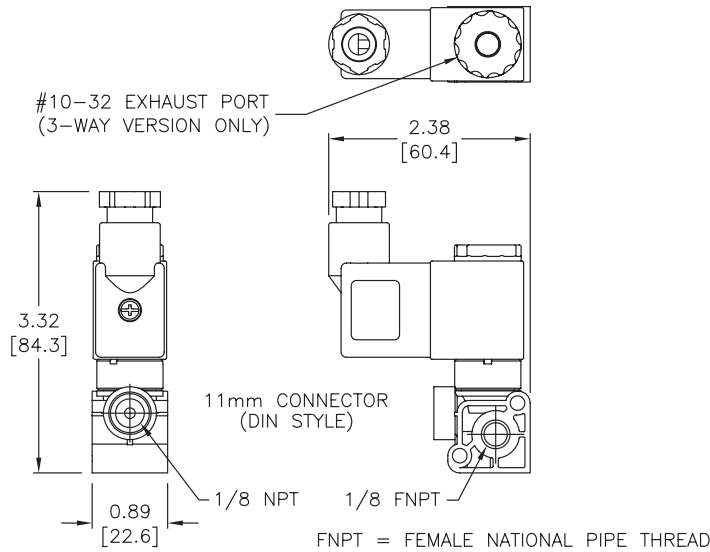
* Check the chemical compatibility of the valve materials with the process media being used.



Process Pipeline Solenoid Valves DVP-2C & DVP-3C Series

Dimensions

inches [mm]



See our website www.AutomationDirect.com
for complete Engineering drawings.

Accessories

DVP-2C & DVP-3C Series Solenoid Valve Accessories			
Part No.	Description	Price	Weight (lbs)
DVP-2BKT	Mounting kit for DVP-2C & 3C series valves, 2 station. Includes (2) #8-32 x 2 inch screws, (2) #8 lock nuts and (1) Viton o-ring.	\$4.75	0.1
DVP-3BKT	Mounting kit for DVP-2C & 3C series valves, 3 station. Includes (2) #8-32 x 3 inch screws, (2) #8 lock nuts and (2) Viton o-rings.	\$6.75	0.1
DVP-4BKT	Mounting kit for DVP-2C & 3C series valves, 4 station. Includes (2) #8-32 x 4 inch screws, (2) #8 lock nuts and (3) Viton o-rings.	\$8.25	0.1
DVP-5BKT	Mounting kit for DVP-2C & 3C series valves, 5 station. Includes (2) #8-32 x 5 inch screws, (2) #8 lock nuts and (4) Viton o-rings.	\$9.75	0.1
DVP-6BKT	Mounting kit for DVP-2C & 3C series valves, 6 station. Includes (2) #8-32 x 6 inch screws, (2) #8 lock nuts and (5) Viton o-rings.	\$12.00	0.1



Part No. DVP-4BKT

Solenoid Valve Cables and Connectors



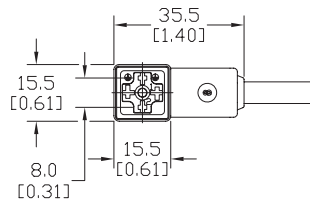
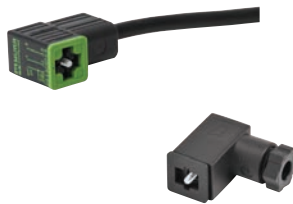
These high quality connectors and over-molded cables help reduce wiring time. The lower voltage models, 24V or 110V AC/DC, include built-in surge suppression, Yellow LED indicator and are rated for connecting with electronics. The 230V AC/DC models are rated for straight wired products. All models are available in five sizes based on DIN 43650.

Features

- 8mm, 9.4mm, 10mm, 11mm and 18mm square DIN styles
- Fits most popular solenoid valves and sensors
- Suppression and LED indication available in 24V or 110V AC/DC models
- PVC jacketed cables in 1, 3 or 5 meter lengths on select connectors
- Field wireable connectors on select models
- Polarity insensitive (follow solenoid, sensor, or other devices wiring diagram)

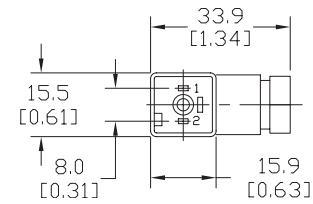
8mm Connectors

Dimensions shown
mm [inches]



Height = 25mm [0.98in]

Connector with Cable



Height = 26mm [1.02]

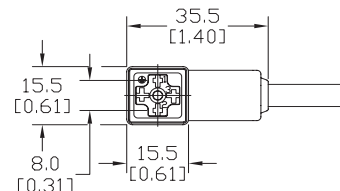
Field Wireable Connector

8mm (3-pole) Connectors (per DIN 43650 Form C)												
Part No.	Price	Voltage (AC/DC)	Current Rating	IP Rating	Wire Size	Cable Dia. (in.)	LED	Surge Protection	Wiring Figure	Screw Size/Torque	Weight (lbs)	Agency Approval
SC8-LS24-3	\$12.00	24 ±20%	max 4A	67	18 AWG	0.23	yes	zener diode (D-Z DO-15 47V 2W)	1	m2.5-0.45x25mm/ 0.4 Nm (3.5 in lb)	0.40	CSA (080128-0-000)
SC8-LS24-5	\$14.50										0.65	
SC8-LS110-3	\$15.00	110 ±10%	max 4A	67	18 AWG	0.23	yes	zener diode (D-Z DO-41 ZY200 2W)	7	m2.5-0.45x25mm/ 0.5 Nm (4.4 in lb)	0.41	
SC8-LS110-5	\$17.50										0.63	
SC8-3	\$10.00	230	max 6A	65	Solid 12 AWG Stranded 14 AWG w/Ferrule 16 AWG	field wireable gland size 0.20 to 0.24	no	none	2	m2.5-0.45x25mm/ 0.5 Nm (4.4 in lb)	0.39	none
SC8-0	\$5.50										0.10	
SC8-1	\$11.00										0.10	
SC8-5	\$13.50			67	18 AWG	0.23			2		0.68	

Last digit in part number denotes cable length in meters, a 0 indicates field termination.

8mm Transmitter Connector

Dimensions shown
mm [inches]



Height = 25mm [0.98in]

Connector with Cable

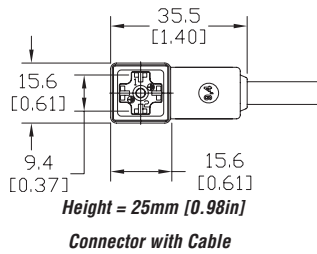
8mm (4-pole) Connectors (per DIN 43650 Form C)												
Part No.	Price	Voltage (AC/DC)	Current Rating	IP Rating	Wire Size	Cable Dia. (in.)	LED	Surge Protection	Wiring Figure	Screw Size/Torque	Weight (lbs)	Agency Approval
SC8-5T	\$18.50	230	max 6A	67	18 AWG	0.26	yes	none	8	m3-0.5x42mm/ 0.5 Nm (4.4 in lb)	0.80	CSA (080128-0-000)

Last numeric digit in part number denotes cable length in meters, a 0 indicates field termination.

Solenoid Valve Cables and Connectors

9.4mm Connectors

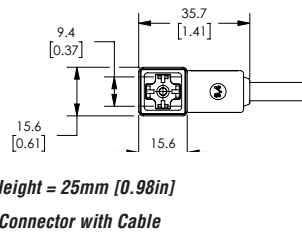
Dimensions shown
mm [inches]



9.4mm (3-pole) Connectors (DIN Style, Form C Industrial)													
Part No.	Price	Voltage (AC/DC)	Current Rating	IP Rating	Wire Size	Cable Dia. (in.)	LED	Surge Protection	Wiring Figure	Screw Size/Torque	Weight (lbs)	Agency Approval	
SC9-LS24-3	\$12.00	24 ±20%	max 4A	67	18 AWG	0.23	yes	zener diode (D-Z D0-15 47V 2W)	1	m3-0.5x26mm/ 0.4 Nm (3.5 in lb)	0.40	CSA (080128-0-000)	
SC9-LS24-5	\$14.50										0.64		
SC9-LS110-3	\$15.00	110 ±10%	max 6A	67	18 AWG	0.23	no	none	2	m3-0.5x26mm/ 0.5 Nm (4.4 in lb)	0.40		none
SC9-LS110-5	\$17.50										0.64		
SC9-3	\$10.00	230	max 6A	67	18 AWG	0.23	no	none	2	m3-0.5x26mm/ 0.5 Nm (4.4 in lb)	0.40	none	
SC9-5	\$13.50										0.64		

9.4mm Connectors

Dimensions shown
mm [inches]

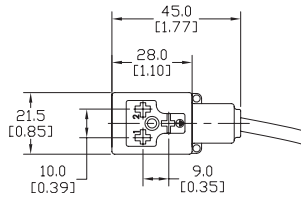


9.4mm (4-pole) Connectors (DIN Style, Form C Industrial)													
Part No.	Price	Voltage (AC/DC)	Current Rating	IP Rating	Wire Size	Cable Dia.	Cable Length	LED	Surge Protection	Wiring Figure	Screw Size/Torque	Weight (lbs)	Agency Approval
7000-94141-6270300	\$14.00	230 VAC/ VDC	max 6A	IP67	18 AWG	5.6-6.2 mm	9.8ft/3m	no	none	8	m3-0.5x26mm/ 0.4 Nm (3.5 in lb)	0.50	CSA (080128-0-000)/ RoHS
7000-94141-6270500	\$19.00						16.4ft/5m					0.79	

Solenoid Valve Cables and Connectors

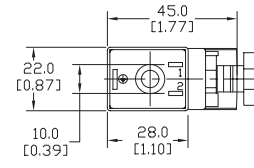
10mm Connectors

Dimensions shown
mm [inches]



Height = 30mm [1.18in]

Connector with Cable



Height = 41mm [1.61in]

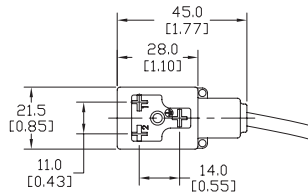
Field Wireable Connector

10mm (3-pole) Connectors (per DIN 43650 Form B)														
Part No.	Price	Voltage (AC/DC)	Current Rating	IP Rating	Wire Size	Cable Dia. (in.)	LED	Surge Protection	Wiring Figure	Screw Size/Torque	Weight (lbs)	Agency Approval		
SC10-LS24-3	\$12.00	24 ±20%	max 4A	67	18 AWG	0.23	yes	zener diode (D-Z DO-15 47V 2W)	10	m3-0.5x30mm/ 0.4 Nm (3.5 in lb)	0.43	CSA (080128-0-000)		
SC10-LS24-5	\$14.50												6	0.43
SC10-LS110-3	\$15.00	110 ±10%	max 1A					zener diode (D-Z DO-41 ZY200 2W)	6					
SC10-LS110-5	\$17.50												3	0.43
SC10-3	\$10.00	230	max 10A					no	none					
SC10-5	\$13.50													
SC10-LS24-0	\$10.00	24 ±20%	max 4A	65	Solid 12 AWG Stranded 14 AWG w/Ferrule 16 AWG	field wireable gland size 0.24 to 0.32	yes	zener diode (D-Z DO-15 47V 2W)	4	m3-0.5x42mm/ 0.5 Nm (4.4 in lb)	0.07	none		
SC10-LS110-0	\$11.00	110 ±10%	max 1A					mov (SIOV S10 K130)	5				0.07	
SC10-0	\$8.25	230	max 10A					no	none					9

Last digit in part number denotes cable length in meters, a 0 indicates field termination.

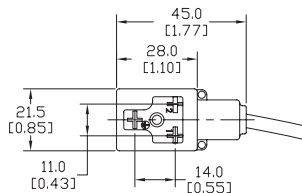
11mm Connectors

Dimensions shown
mm [inches]



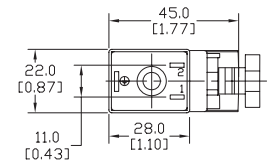
Height = 30mm [1.18in]

Connector with Cable



Height = 30mm [1.18in]

Reverse Connector with Cable



Height = 41mm [1.61in]

Field Wireable Connector

11mm (3-pole) Connectors (DIN Style, Form B Industrial)													
Part No.	Price	Voltage (AC/DC)	Current Rating	IP Rating	Wire Size	Cable Dia. (in)	LED	Surge Protection	Wiring Figure	Screw Size/Torque	Weight (lbs)	Agency Approval	
SC11-LS24-3	\$12.00	24 ±20%	max 4A	67	18 AWG	0.23	yes	zener diode (D-Z DO-15 47V 2W)	10	m3-0.5x30mm/ 0.4 Nm (3.5 in lb)	0.44	CSA (080128-0-000)	
SC11-LS24-5	\$14.50												6
SC11-LS110-3	\$15.00	110 ±10%	max 1A					zener diode (D-Z DO-41 ZY200 2W)	6				
SC11-LS110-5	\$17.50												10
SC11-LS24-3R	\$12.00	24 ±20%	max 4A					zener diode (D-Z DO-15 47V 2W)	10				
SC11-LS24-5R	\$14.50												6
SC11-LS110-3R	\$15.00	110 ±10%	max 1A	zener diode (D-Z DO-41 ZY200 2W)	6	0.44							
SC11-LS110-5R	\$17.50						3	0.67					
SC11-3	\$10.00	230	max 10A	no	none	3			0.44				
SC11-5	\$13.50						0.67						
SC11-LS24-0	\$10.00	24 ±20%	max 4A	65	Solid 12 AWG Stranded 14 AWG w/Ferrule 16 AWG	field wireable gland size 0.24 to 0.32		yes	zener diode (D-Z DO-15 47V 2W)	4	m3-0.5x42mm/ 0.5 Nm (4.4 in lb)	0.07	none
SC11-LS110-0	\$11.00	110 ±10%	max 1A				mov (SIOV S10 K130)		5	0.07			
SC11-0	\$8.25	230	max 10A				no		none				

Last numeric digit in part number denotes cable length in meters, a 0 indicates field termination.

Solenoid Valve Cables and Connectors Wiring Diagrams

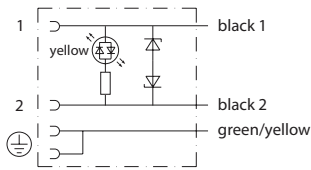


Figure No. 1

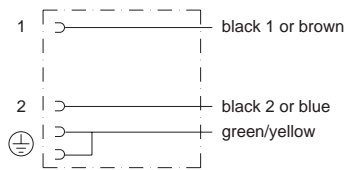


Figure No. 2

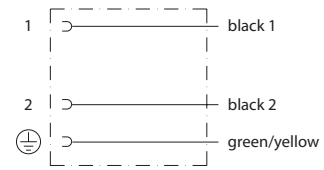


Figure No. 3

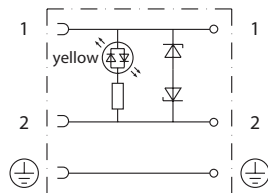


Figure No. 4

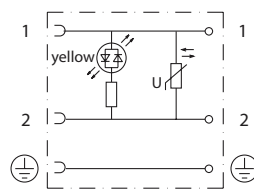


Figure No. 5

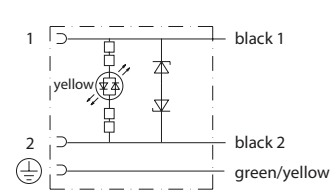


Figure No. 6

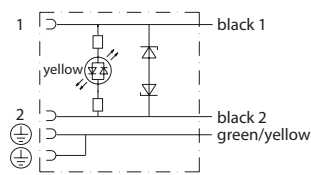


Figure No. 7

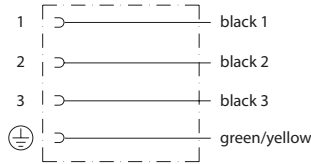


Figure No. 8

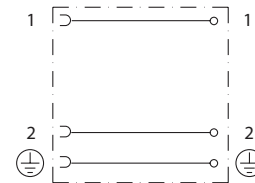


Figure No. 9

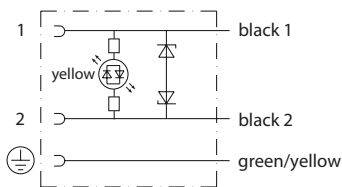


Figure No. 10