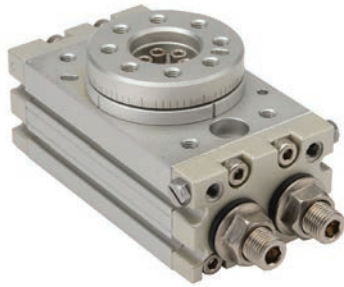




Rotary Actuator

Double Acting



J10MD-M

NITRA Pneumatics rotary actuators are an excellent choice for many automation applications. Available in four body sizes with or without shock absorbers. All are double acting and have an adjustable travel range from zero to 190 degrees. Anodized aluminum bodies include integral mounting slots for position switches.

Features

- Four body sizes (10, 20, 30, 50 lb-in @ 80 psi)
- Anodized aluminum bodies
- Available with rubber bumpers or shock absorbers
- Position switch ready with integral mounting slots
- Zero to 190 degrees adjustable rotation

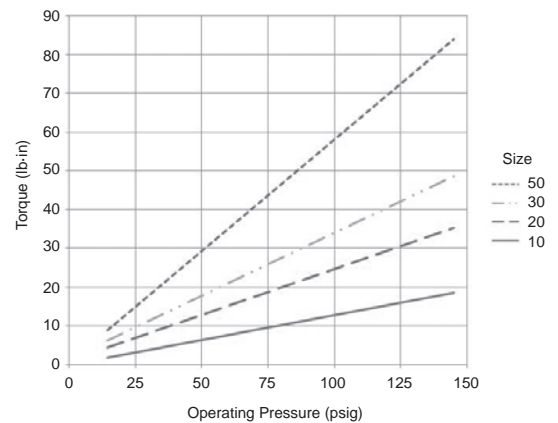


NITRA Rotary Actuators - Double Acting										
Part No.	Description	Action	Size*	Air Consumption (cc/deg)	End Stops	Body	Port(s)	Price	Weight (lbs)	
J10MD-M	NITRA pneumatic rotary actuator	Double acting	10	0.04	Rubber bumpers	Anodized aluminum	M5 x 0.8	\$224.00	1.3	
J10MD-MA					Shock Absorber			\$276.00	1.3	
J20MD-M			Rubber bumpers	\$256.00	2.3					
J20MD-MA			Shock Absorber	\$312.00	2.3					
J30MD-M			Rubber bumpers	30	0.10		Shock Absorber	1/8in female NPT	\$276.00	3.0
J30MD-MA			\$335.00						3.0	
J50MD-M			Rubber bumpers	50	0.18		Shock Absorber		\$315.00	4.9
J50MD-MA			\$390.00						4.9	

* lb-in torque @ 80 psi

NITRA Rotary Actuator Specifications		
Fluid	Air (clean/dry)	
Action	Double rack and pinion (double acting)	
Pressure Range	Bolt Adjustment	14 to 145 psig (0.97 to 9.99 bar)
	Shock Adjustment	14 to 87 psig (0.97 to 5.99 bar)
Proof Pressure	175 psig	
Temperature Range	32°F to 140°F (0°C to 60°C)	
Adjustment Angle Range	0° to 190° Rotation	
Repeatable Precision	Bolt Adjustment	0.2°
	Shock Adjustment	0.05°
Rotation Times (s/90°)	Bolt Adjustment	0.2 - 1.0
	Shock Adjustment	0.2 - 0.7
Cushion Type	Bolt Adjustment	Rubber Bumper
	Shock Adjustment	Shock Absorber
Port Size	M5 x 0.8 (sizes 10 and 20) Rear ports 1/8 NPT / Side ports M5 x 0.8 (sizes 30 and 50)	
Sensor Switch Compatibility	Nitra CPS9C-xx-x	
Includes	Magnet	
Approvals	None	

Torque Output

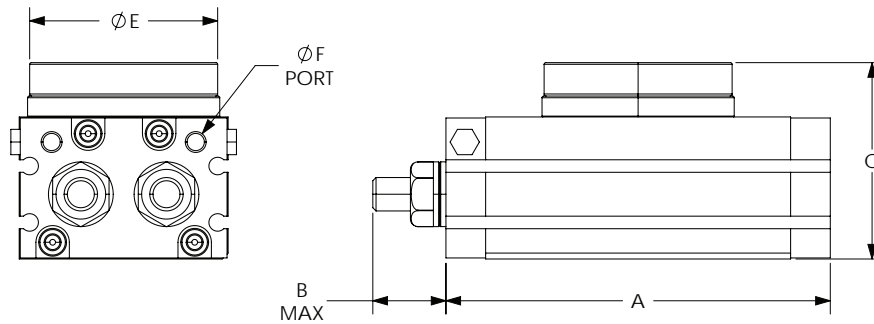
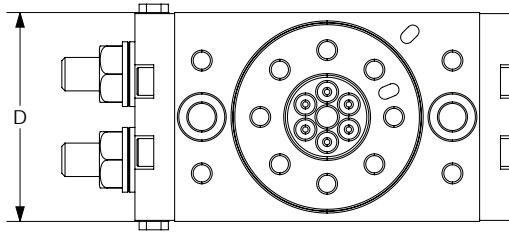




Rotary Actuator

Dimensions

mm [inches]



Rotary Actuator Dimensions						
Part #	A	B	C	D	ØE	ØF
J10MD-M	92.0 [3.62]	17.5 [0.69]	47.0 [1.85]	50.0 [1.97]	45.0 [1.77]	M5 x 0.8
J10MD-MA	92.0 [3.62]	28.5 [1.12]	47.0 [1.85]	50.0 [1.97]	45.0 [1.77]	M5 x 0.8
J20MD-M	117.0 [4.61]	26.0 [1.02]	54.0 [2.13]	65.0 [2.56]	60.0 [2.36]	M5 x 0.8
J20MD-MA	117.0 [4.61]	39.0 [1.54]	54.0 [2.13]	65.0 [2.56]	60.0 [2.36]	M5 x 0.8
J30MD-M	127.0 [5.00]	25.5 [1.00]	57.0 [2.24]	70.0 [2.76]	65.0 [2.56]	1/8 NPT
J30MD-MA	127.0 [5.00]	39.0 [1.54]	57.0 [2.24]	70.0 [2.76]	65.0 [2.56]	1/8 NPT
J50MD-M	152.0 [5.98]	31.5 [1.24]	66.0 [2.60]	80.0 [3.15]	75.0 [2.95]	1/8 NPT
J50MD-MA	152.0 [5.98]	51.0 [2.01]	66.0 [2.60]	80.0 [3.15]	75.0 [2.95]	1/8 NPT

See our website www.AutomationDirect.com for complete Engineering drawings.

Accessories



J2030M-SA

NITRA Rotary Actuator Accessories			
Part No.	Description	Price	Weight (lbs)
J10M-SA	NITRA shock absorber, for use with J-series size 10 rotary actuators.	\$28.50	0.1
J2030M-SA	NITRA shock absorber, for use with J-series sizes 20 and 30 rotary actuators.	\$31.50	0.2
J50M-SA	NITRA shock absorber, for use with J-series size 50 rotary actuators.	\$38.50	0.2