



# SLV Series Pneumatic Lockout Valves Accessories

## Features

- Silencers (mufflers) are aluminum construction
- High flow rates needed for safety lockout valves
- Pressure indicator pops out when pressure of 5psi or more is present



**HVM-34N**



**SLV-PU**

**Note: HVM series exhaust silencers have a maximum pressure of 250PSI (17 bar).**

NITRA SLV Series Pneumatic Lockout Valve Accessories			
Part No.	Description	Price	Weight (lbs)
<b>HVM-18N</b>	NITRA pneumatic exhaust silencer, aluminum, cylindrical, Cv=2, 1/8in male NPT	\$15.00	0.1
<b>HVM-14N</b>	NITRA pneumatic exhaust silencer, aluminum, cylindrical, Cv=2.7, 1/4in male NPT	\$15.00	0.1
<b>HVM-38N</b>	NITRA pneumatic exhaust silencer, aluminum, cylindrical, Cv=3.2, 3/8in male NPT	\$14.50	0.1
<b>HVM-38N-H</b>	NITRA pneumatic exhaust silencer, aluminum, cylindrical, Cv=4.9, 3/8in male NPT	\$20.00	0.2
<b>HVM-12N</b>	NITRA pneumatic exhaust silencer, aluminum, cylindrical, Cv=5.9, 1/2in male NPT	\$20.00	0.2
<b>HVM-34N</b>	NITRA pneumatic exhaust silencer, aluminum, cylindrical, Cv=5.9, 3/4in male NPT	\$20.00	0.2
<b>HVM-34N-H</b>	NITRA pneumatic exhaust silencer, aluminum, cylindrical, Cv=13.5, 3/4in male NPT	\$39.50	0.6
<b>HVM-1N</b>	NITRA pneumatic exhaust silencer, aluminum, cylindrical, Cv=16.7, 1in male NPT	\$39.50	0.6
<b>HVM-114N</b>	NITRA pneumatic exhaust silencer, aluminum, cylindrical, Cv=17.4, 1-1/4in male NPT	\$39.50	0.6
<b>SLV-PU</b>	NITRA pneumatic pop up pressure indicator, 5 psi, 1/8in male NPT	\$20.50	0.1

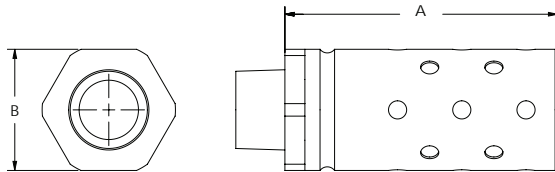


# SLV Series Pneumatic Lockout Valves Accessories

## Nitra High Volume Silencers (Mufflers)

### Dimensions

inches [mm]

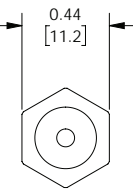
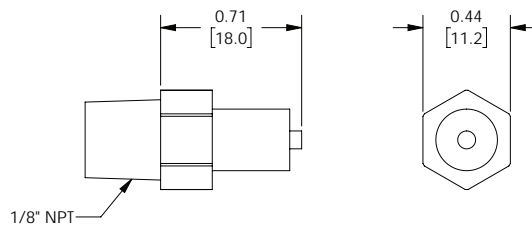


Muffer Dimensions		
Part #	A	B
<b>HVM-18N</b>	1.6 [40.64]	0.8 [20.32]
<b>HVM-14N</b>	1.6 [40.64]	0.8 [20.32]
<b>HVM-38N</b>	1.6 [40.64]	0.8 [20.32]
<b>HVM-38N-H</b>	2.9 [73.66]	1.3 [33.02]
<b>HVM-12N</b>	2.9 [73.66]	1.3 [33.02]
<b>HVM-34N</b>	2.9 [73.66]	1.3 [33.02]
<b>HVM-34N-H</b>	4.5 [114.30]	2.0 [50.80]
<b>HVM-1N</b>	4.5 [114.30]	2.0 [50.80]
<b>HVM-114N</b>	4.5 [114.30]	2.0 [50.80]

## Nitra Pop Up Pressure Indicator

### Dimensions

inches [mm]



See our website [www.AutomationDirect.com](http://www.AutomationDirect.com) for complete Engineering drawings.